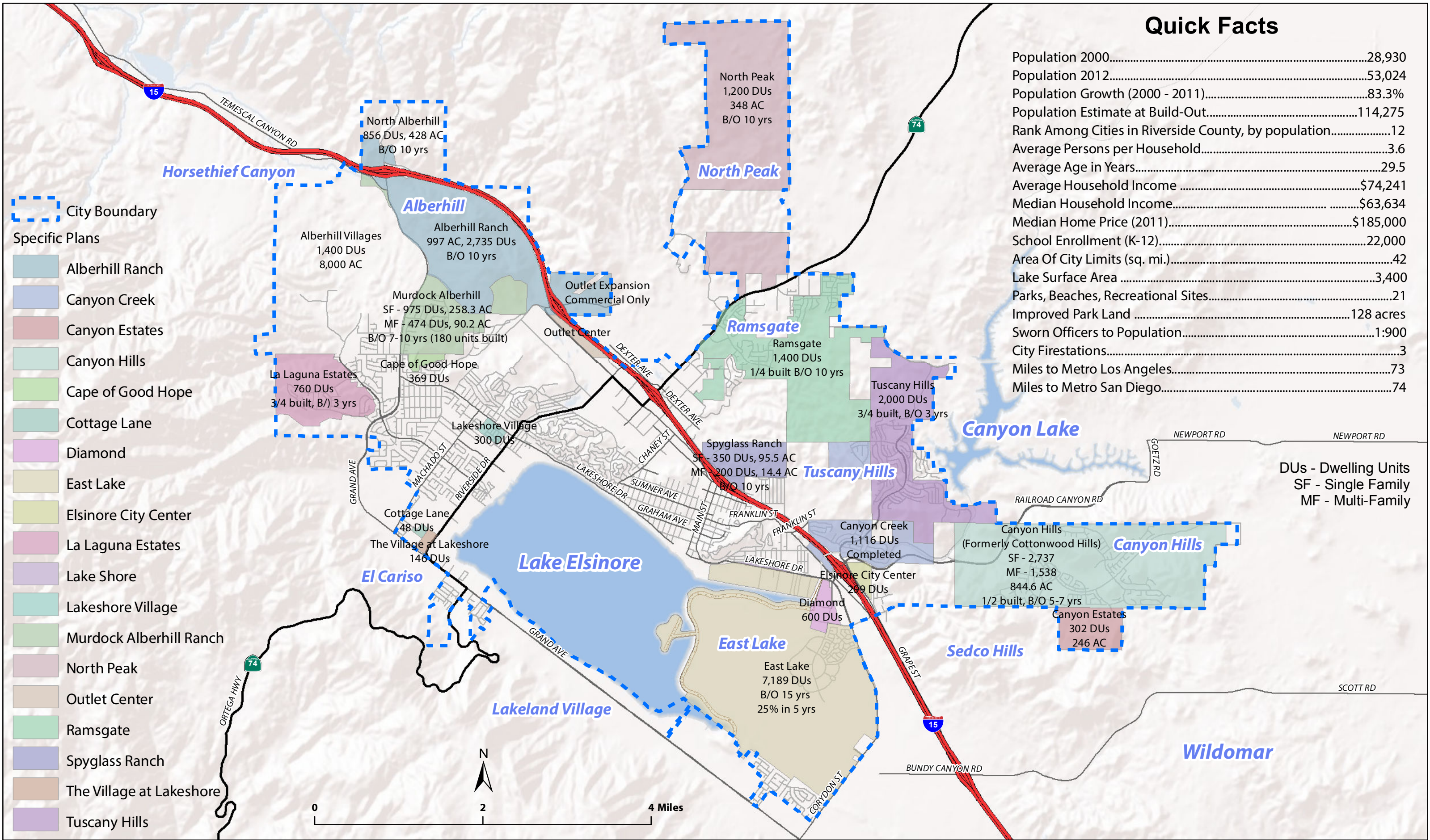


Quick Facts

Population 2000.....	28,930
Population 2012.....	53,024
Population Growth (2000 - 2011).....	83.3%
Population Estimate at Build-Out.....	114,275
Rank Among Cities in Riverside County, by population.....	12
Average Persons per Household.....	3.6
Average Age in Years.....	29.5
Average Household Income.....	\$74,241
Median Household Income.....	\$63,634
Median Home Price (2011).....	\$185,000
School Enrollment (K-12).....	22,000
Area Of City Limits (sq. mi.).....	42
Lake Surface Area.....	3,400
Parks, Beaches, Recreational Sites.....	21
Improved Park Land.....	128 acres
Sworn Officers to Population.....	1:900
City Firestations.....	3
Miles to Metro Los Angeles.....	73
Miles to Metro San Diego.....	74

DUs - Dwelling Units
SF - Single Family
MF - Multi-Family



- City Boundary
- Specific Plans**
- Alberhill Ranch
- Canyon Creek
- Canyon Estates
- Canyon Hills
- Cape of Good Hope
- Cottage Lane
- Diamond
- East Lake
- Elsinore City Center
- La Laguna Estates
- Lake Shore
- Lakeshore Village
- Murdock Alberhill Ranch
- North Peak
- Outlet Center
- Ramsgate
- Spyglass Ranch
- The Village at Lakeshore
- Tuscany Hills



QUICK LOOK CITY OF LAKE ELSINORE RESIDENTIAL DEVELOPMENT

PREPARED BY:
CITY OF LAKE ELSINORE GIS
NOVEMBER 5, 2012
DATA SOURCES:
CITY OF LAKE ELSINORE GIS
COUNTY OF RIVERSIDE GIS