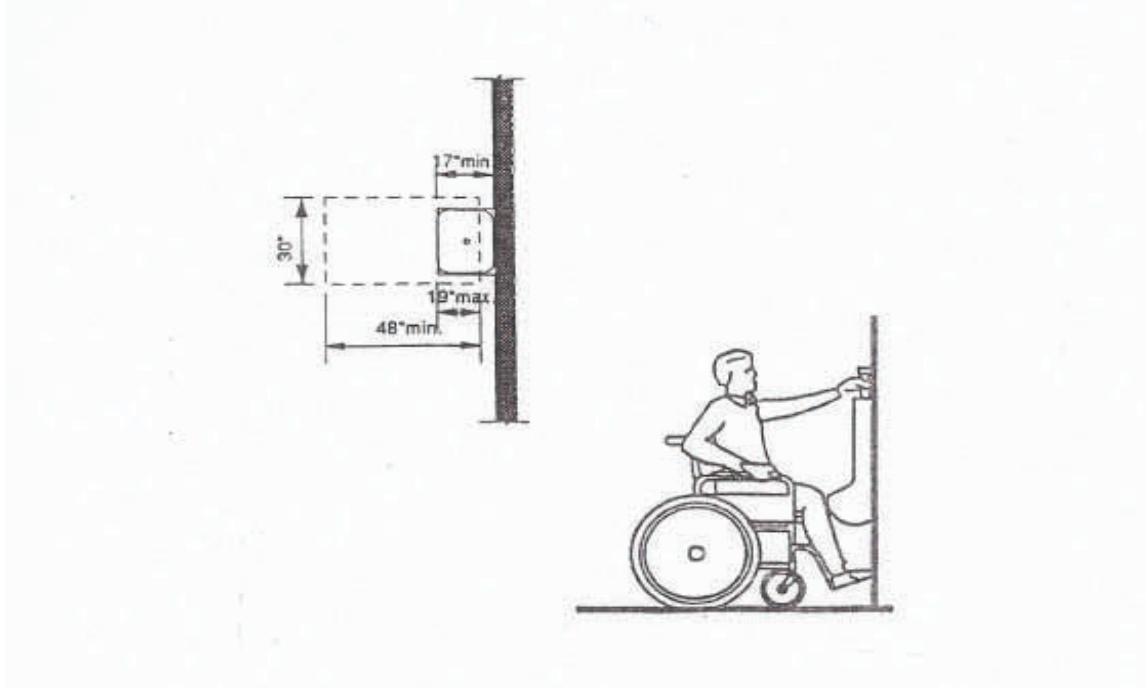


ACCESSIBLE URINALS



1. Urinals shall be floor mounted, stall-type, or wall hung. Where one or more wall-hung urinals are provided at least one with an elongated rim projecting a minimum of 14 inches from the wall and a maximum of 17 inches from the wall, and a maximum of 17 inches above the floor shall be provided.
2. Flush controls shall be operable with one hand and shall not require tight grasping, pinching, or twisting of the wrist and shall be mounted no more than 44 inches above the floor. The force required to activate the controls shall be no greater than 5 pounds.
3. Where urinals are provided, at least one shall have a clear floor space 30 inches by 48 inches in front of the urinal to allow forward approach.
4. Refer to Section 1118.4 for additional clear space requirements.

CBC 1115B.4.2 January 2008