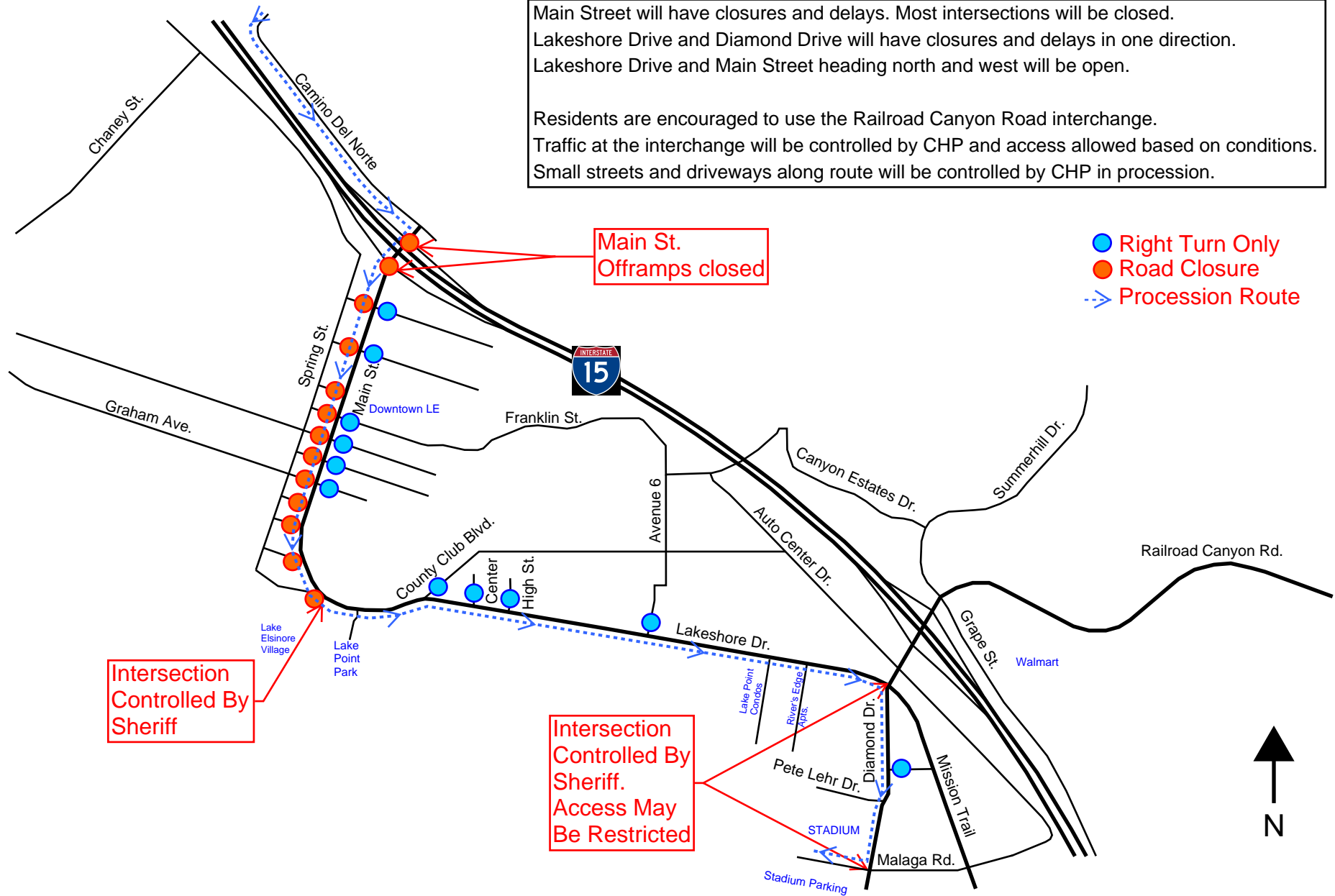


West Coast Thunder - May 27, 2019
 9:30AM - 1:00PM
 Traffic Map

Main Street will have closures and delays. Most intersections will be closed.
 Lakeshore Drive and Diamond Drive will have closures and delays in one direction.
 Lakeshore Drive and Main Street heading north and west will be open.

Residents are encouraged to use the Railroad Canyon Road interchange.
 Traffic at the interchange will be controlled by CHP and access allowed based on conditions.
 Small streets and driveways along route will be controlled by CHP in procession.



- Right Turn Only
- Road Closure
- Procession Route

West Coast Thunder - May 27, 2019
9:30AM - 1:00PM
Traffic Map

Westbound Central Avenue (towards Lake Elsinore) will have closures and delays.
Eastbound Central Avenue (towards Perris) will be open.

Residents on the west side of I-15 are encouraged to use the Nichols Road interchange.
Residents along Central Avenue will be let onto Central Avenue intermittently by Sheriff.
Traffic at the interchange will be controlled by CHP and access allowed based on conditions.
Small streets and driveways along route will be controlled by CHP in procession.

