

# City of Lake Elsinore

## Introduction to Redistricting 2021

8/10/2021

Todd Tatum  
National Demographics Corporation

# Redistricting Process

---

Step	Description
<b>Two Initial Hearings</b> August 10 & September 14	Held prior to release of draft maps. Education and to solicit input on the communities in the Districts.
<b>Census Data Release</b> Mid/Late August	Census Bureau releases official 2020 Census population data.
<b>California Data Release</b> Early October 2021	California Statewide Database releases California's official 'prisoner-adjusted' 2020 redistricting data.
<b>Two Draft Map Hearings</b> TBD & TBD	Two Public Hearings to discuss and revise the draft maps and to discuss the election sequence.
<b>Map Adoption</b> By April 17, 2022	Final map must be posted at least 7 days prior to adoption. Map adopted via ordinance.*

# Redistricting Rules and Goals

## 1. Federal Laws

Equal Population  
Federal Voting Rights Act  
No Racial Gerrymandering



## 2. California Criteria for Cities (rank ordered)

1. Geographically contiguous
2. Undivided neighborhoods and “communities of interest”  
(Socio-economic geographic areas that should be kept together)
3. Easily identifiable boundaries
4. Compact  
(Do not bypass one group of people to get to a more distant group of people)

### Prohibited:

“Shall not favor or discriminate against a political party.”

## 3. Other Traditional Redistricting Principles

Minimize voters shifted to different election years  
Respect voters’ choices / continuity in office  
Future population growth  
Preserving the core of existing districts

# Demographic Summary of Existing Districts

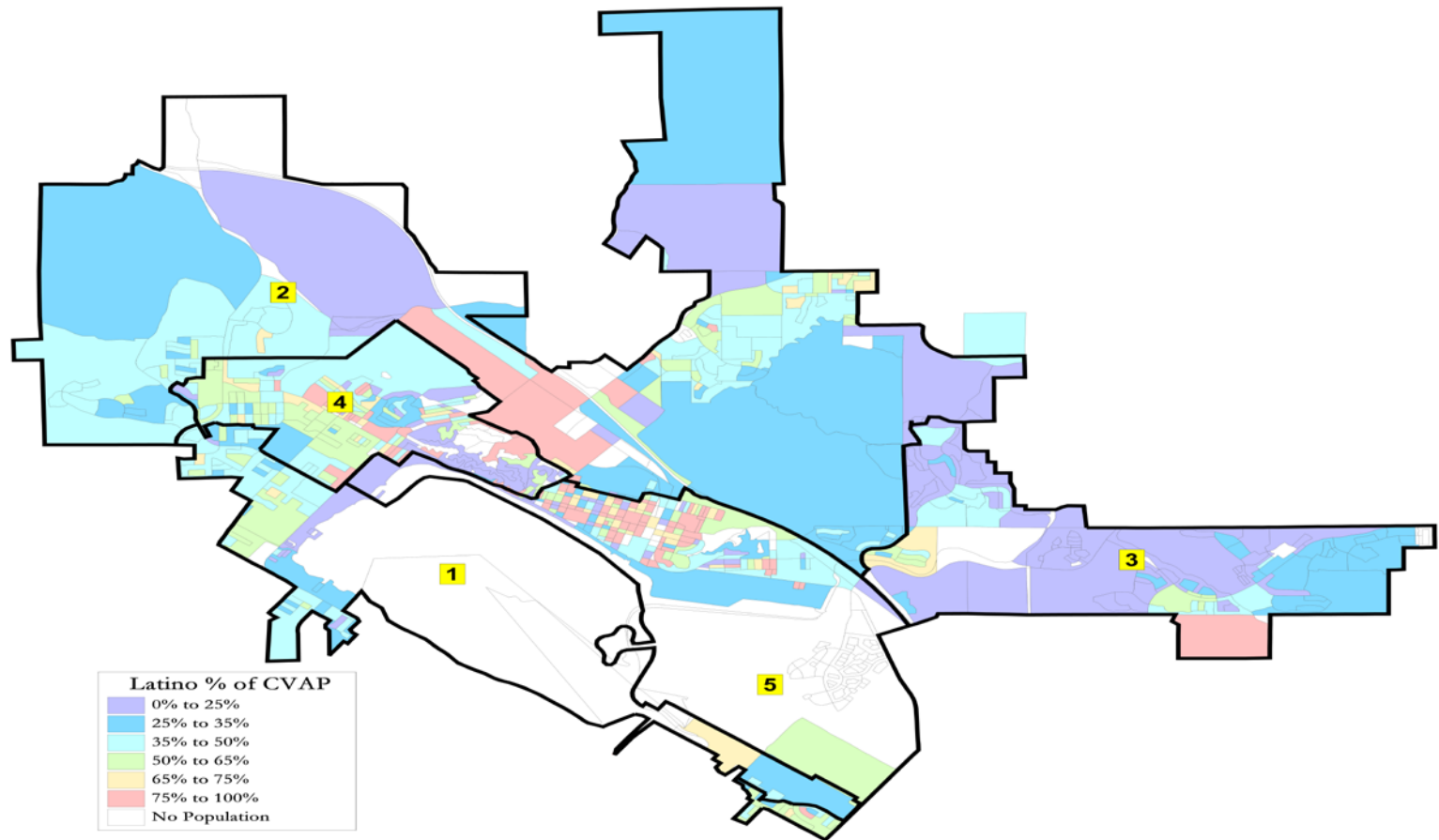
City of Lake Elsinore - Current Districts							
Category	Field	1	2	3	4	5	Count
2020 Est. Population	2020 Estimated Pop.	10,388	14,274	16,363	12,722	13,123	66,870
	Estimated Deviation	-2,986	900	2,989	-652	-251	5,975
	Est. Pct. Deviation	-22.32%	6.73%	22.35%	-4.87%	-1.88%	44.67%
Citizen Voting Age Pop	Total	5,774	8,356	8,756	7,137	6,233	36,256
	Hisp	43%	42%	26%	52%	53%	42%
	NH White	42%	40%	45%	39%	30%	40%
	NH Black	6%	5%	17%	4%	11%	9%
	Asian/Pac.Isl.	6%	12%	11%	3%	6%	8%

**Estimates using official 2020 demographic data and NDC's estimated total population figures.**

**Each of the 5 districts must contain about 13,374 people.**

# Latino CVAP

There is some concentration of Latinos, African-Americans, Asian-Americans, or Native Americans



# Defining Neighborhoods

---

**1<sup>st</sup> Question: What is your neighborhood?**

**2<sup>nd</sup> Question: What are its geographic boundaries?**

**Examples of physical features defining a neighborhood boundary:**

- Natural neighborhood dividing lines, such as highway or major roads, rivers, canals and/or hills
- Areas around parks or schools
- Other neighborhood landmarks

**In the absence of public testimony, planning records and other similar documents may provide definition.**



# Beyond Neighborhoods: Defining Communities of Interest

---

## 1<sup>st</sup> Question: What defines your community?

- Geographic Area, plus
- Shared issue or characteristic
  - Shared social or economic interest
  - Impacted by county policies
- Tell us “your community’s story”

## 2<sup>nd</sup> Question: Would this community benefit from being “included within a single district for purposes of its effective and fair representation”?

- Or would it benefit more from having multiple representatives?

Definitions of Communities of Interest may not include relationships with political parties, incumbents, or political candidates.

# Beyond Neighborhoods: Communities

---

Under the California Elections Code, “community of interest” has a very specific definition in the context of districting and redistricting cities and counties:

A “community of interest” is a population that shares common social or economic interests that should be included within a single district for purposes of its effective and fair representation.

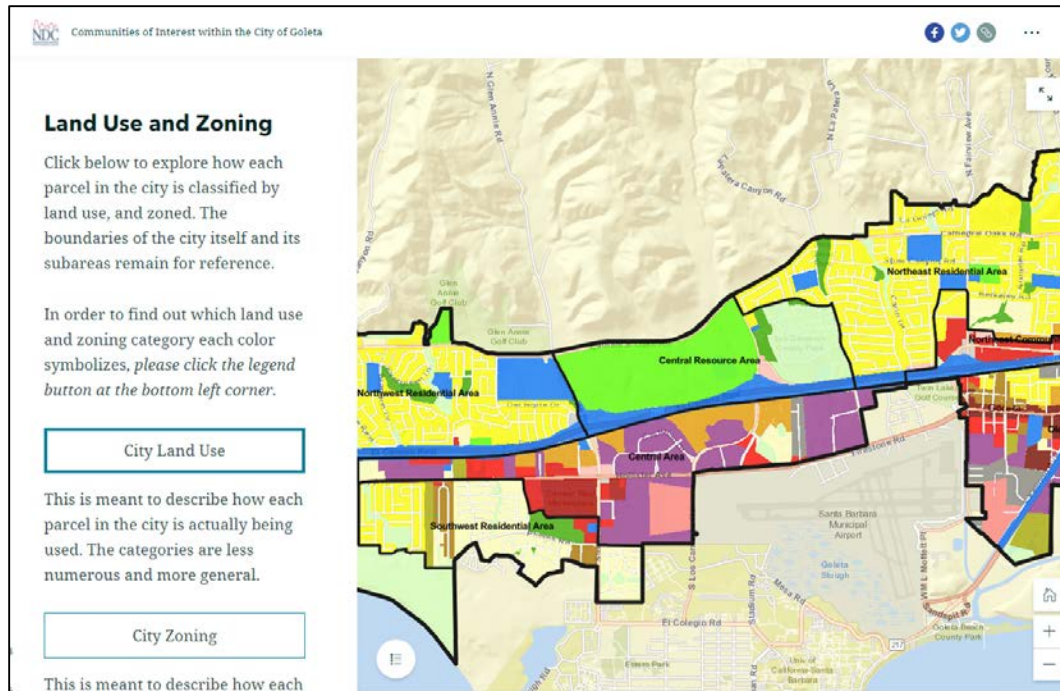
Communities of interest do not include relationships with political parties, incumbents, or political candidates.

(emphasis added)



# Story Map

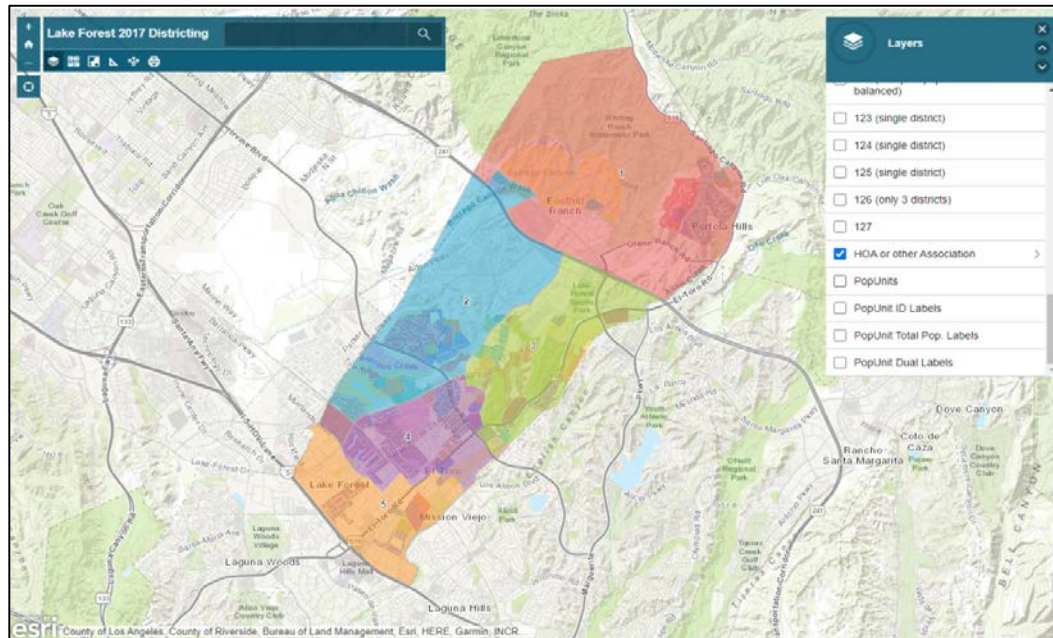
- Easy to use “story” of demographic and other data
  - Similar to PowerPoint, but interactive
  - Used to identify “communities of interest”
  - [Sample map from Goleta](#)



# Simple Map Review Tool

## Online Interactive Review Map

- ESRI's "ArcGIS Online" – similar to Google Maps in ease of use
- Used to review, analyze and compare maps, not to create them
- Includes overlays of "community of interest" and other data

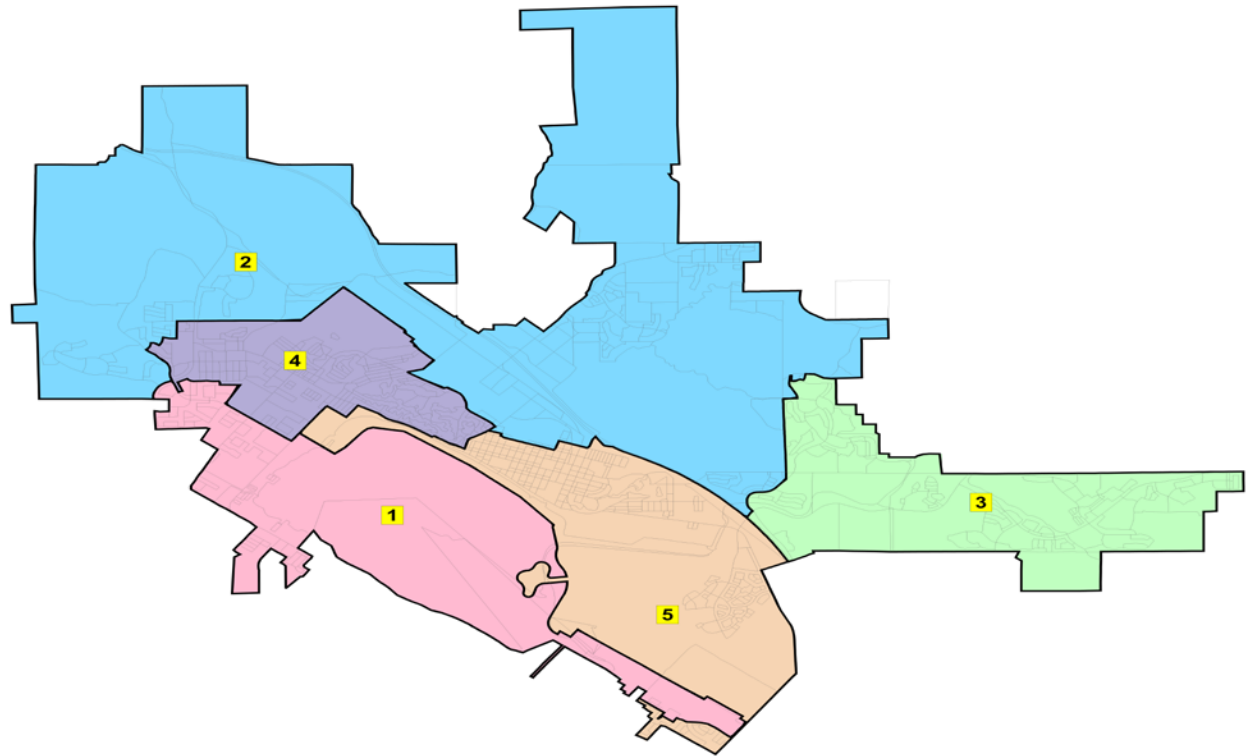


# Public Hearing & Discussion

---

What is your neighborhood and what are its boundaries?

What other notable areas are in the City, and what are their boundaries?



# Share Your Thoughts

---

## Website

<http://www.lake-elsinore.org/city-hall/city-clerk/election-information/election-districts/2021-2022-redistricting>

## Phone

(951) 674-3124 ext. 269

## Email

[calvarez@lake-elsinore.org](mailto:calvarez@lake-elsinore.org)