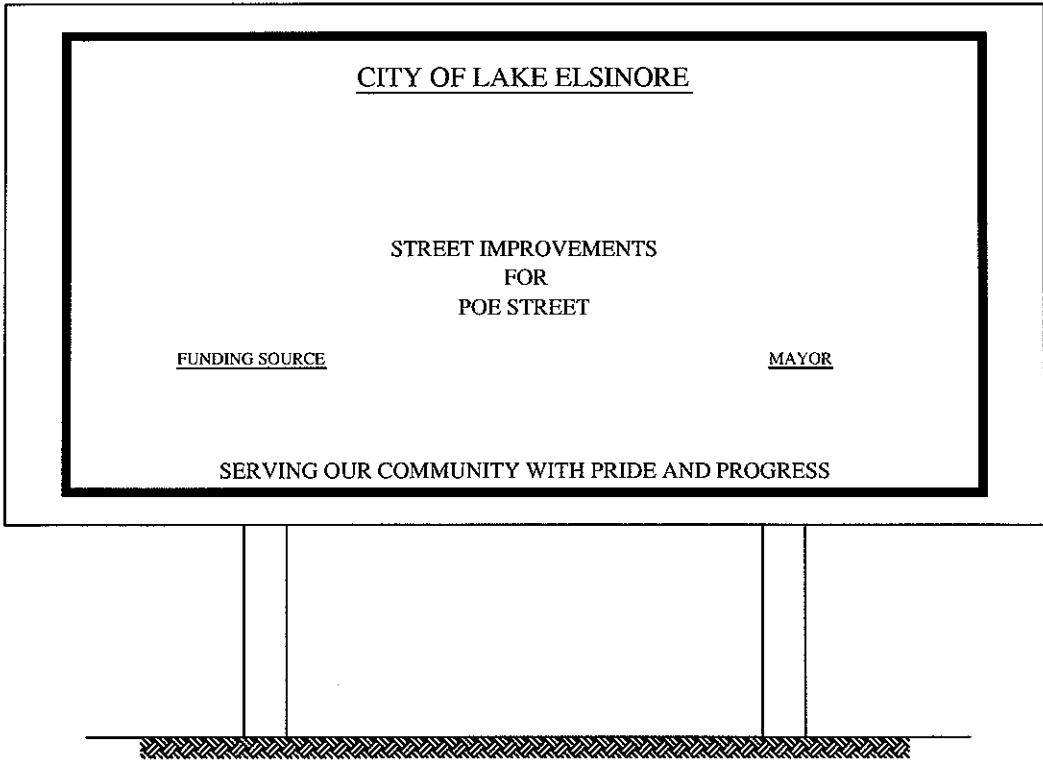


CITY OF LAKE ELSINORE
STANDARD PLANS

SECTION 6:
Miscellaneous



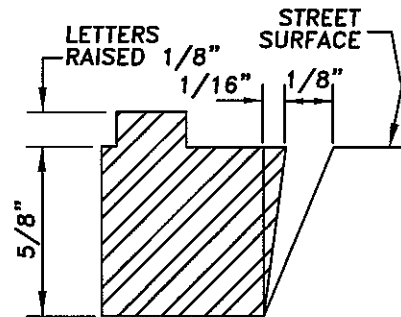
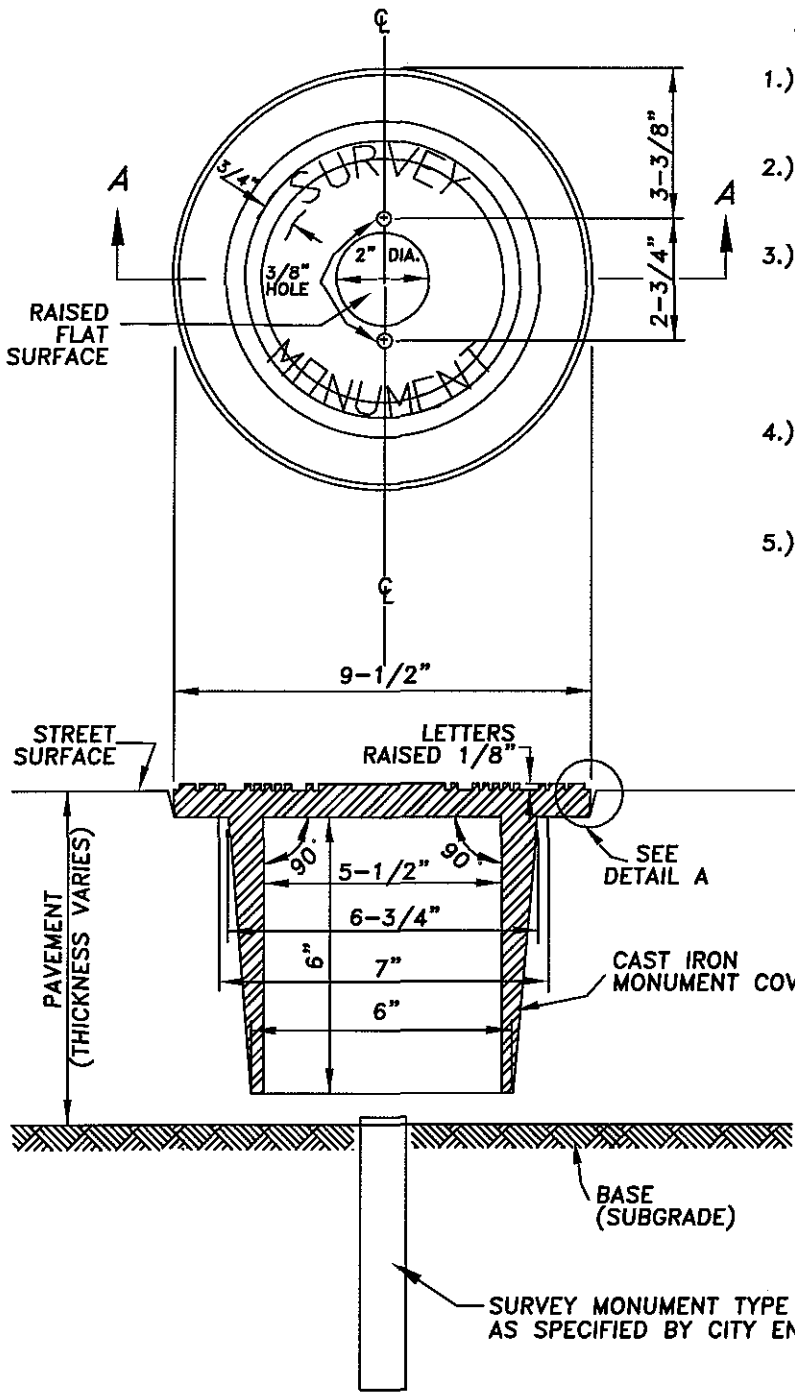
NOTES:

- 1.) SIGN SHALL BE 4' x 8' & HAVE MINIMUM 7' GROUND CLEARANCE
- 2.) SIGN SHALL BE STARK WHITE BACKGROUND AND BLUE LETTERING
- 4.) SIGN SHALL BE PLACED AT THE END OF THE STREET THAT WORK IS BEING CONSTRUCTED ON. IF VARIOUS LOCATIONS OF THE WORK ARE INCLUDED, THE SIGNS WILL BE MOVED BY THE CONTRACTOR PER THE CITY SCHEDULE.

REVISION		PUBLIC WORKS DATE 07/09	CITY OF LAKE ELSINORE <i>PREPARED BY PUBLIC WORKS</i>	
DATE	APPROVED			
		APPROVED BY	CITY CAPITAL IMPROVEMENT PROJECT CONSTRUCTION SIGN	
		<i>Ken A. Lando</i>		
		CITY ENGINEER		
		08/31/2009 DATE		
			NO. 600	

NOTES

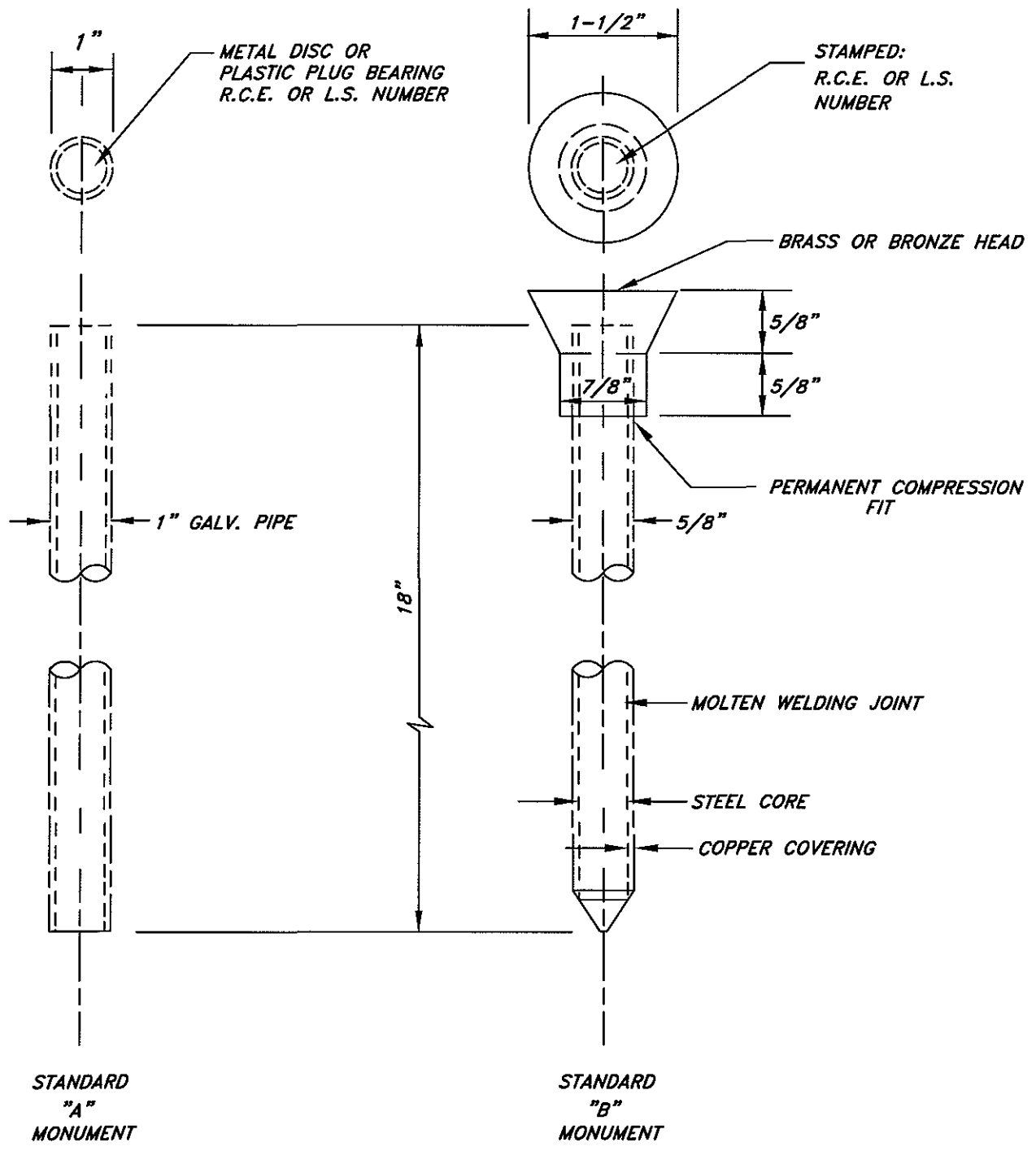
- 1.) CAST IRON SHALL CONFORM TO SECTION 206-3 OF "STANDARD SPECIFICATIONS FOR PUBLIC WORKS CONSTRUCTION."
- 2.) LETTERING SHALL BE AS SHOWN HEREON, 1/8" HIGH, AND SHALL BE CAST INTEGRAL WITH THE CASTING.
- 3.) THE 3/8" DIAMETER HOLES IN THE COVER SHALL BE AS SHOWN HEREON, AND SHALL EITHER BE FORMED BY PROVIDING A REMOVABLE PLUG PRIOR TO CASTING OR DRILLED AFTER CASTING HAS COOLED AND BEFORE COATING IS APPLIED. THE HOLES SHALL NOT BE PUNCHED.
- 4.) AFTER CASTING HAS COOLED, IT SHALL BE GIVEN AN ASPHALTIC COATING CONFORMING TO SECTION 206-3.6 OF THE STANDARD SPECIFICATIONS.
- 5.) DURING INSTALLATION, WHEN THE PAVEMENT IS FOUND TO BE LESS THAN 6-5/8" THICK THE BASE OF THE MONUMENT COVER SHALL BE CUT SO THAT THE BASE OF THE MONUMENT COVER DOES NOT EXTEND INTO THE BASE. APPLY A COAT OF ASPHALTIC COATING OR ASPHALT PAINT TO ANY UNCOATED SURFACE OR CUTEDGE.




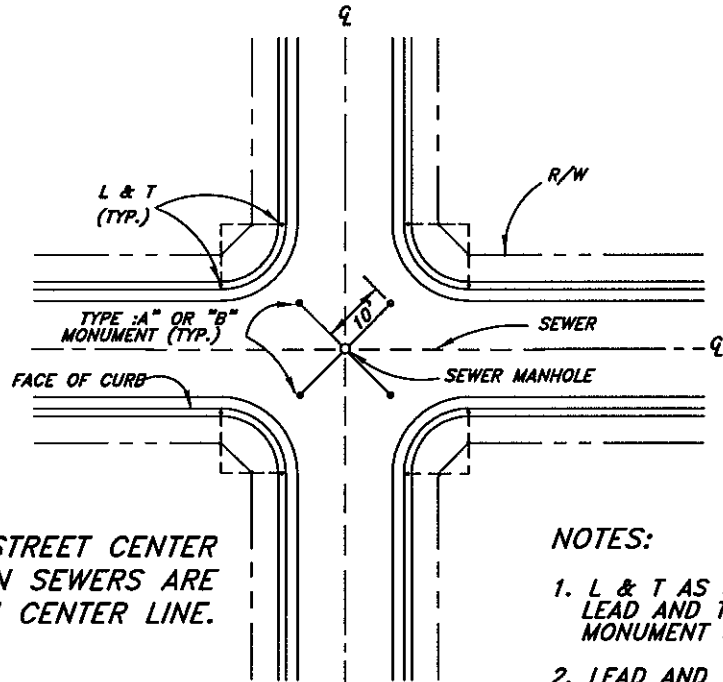
DETAIL A

SECTION "A-A"

REVISION	ENGINEERING	DATE 07/09	CITY OF LAKE ELSINORE	
DATE APPROVED			PREPARED BY PUBLIC WORKS	
	APPROVED BY		1 OF 5	
	CITY ENGINEER		MONUMENT COVER	
	08/31/2009 DATE		NO. 601A	



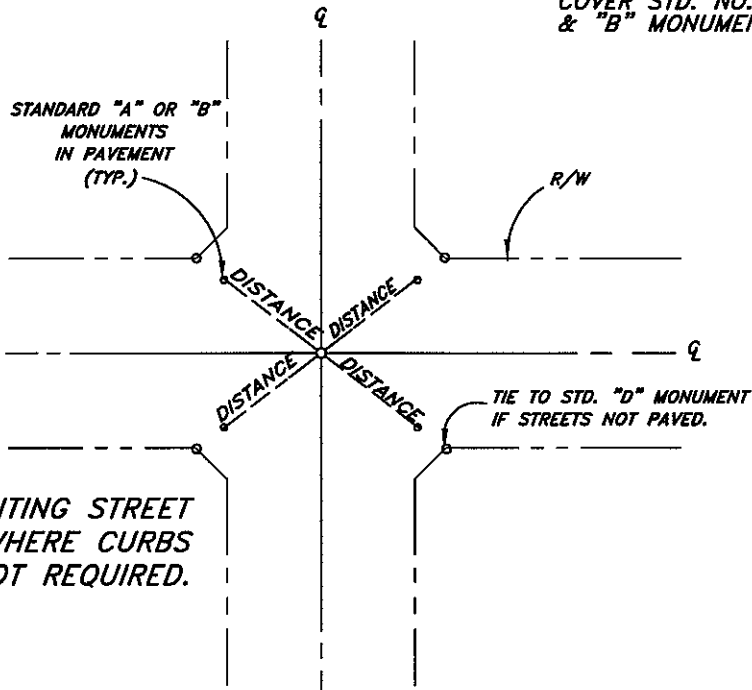
REVISION		ENGINEERING	DATE 07/09	CITY OF LAKE ELSINORE PREPARED BY PUBLIC WORKS	2 OF 5
DATE	APPROVED	APPROVED BY			SURVEY MONUMENT
		 CITY ENGINEER		08/31/2009 DATE	601B




MONUMENTING STREET CENTER LINES WHEN SEWERS ARE LOCATED ON CENTER LINE.

NOTES:

1. L & T AS SHOWN HEREON INDICATES LEAD AND TACK OR STEEL PIN MONUMENT SET IN CURB.
2. LEAD AND TACK OR STEEL PIN MONUMENT WITNESS TO PROPERTY CORNER MAY BE SET, NOT REQUIRED.
3. SEE STD. NO. 601A FOR MONUMENT COVER STD. NO. 601B FOR TYPE "A" & "B" MONUMENT.



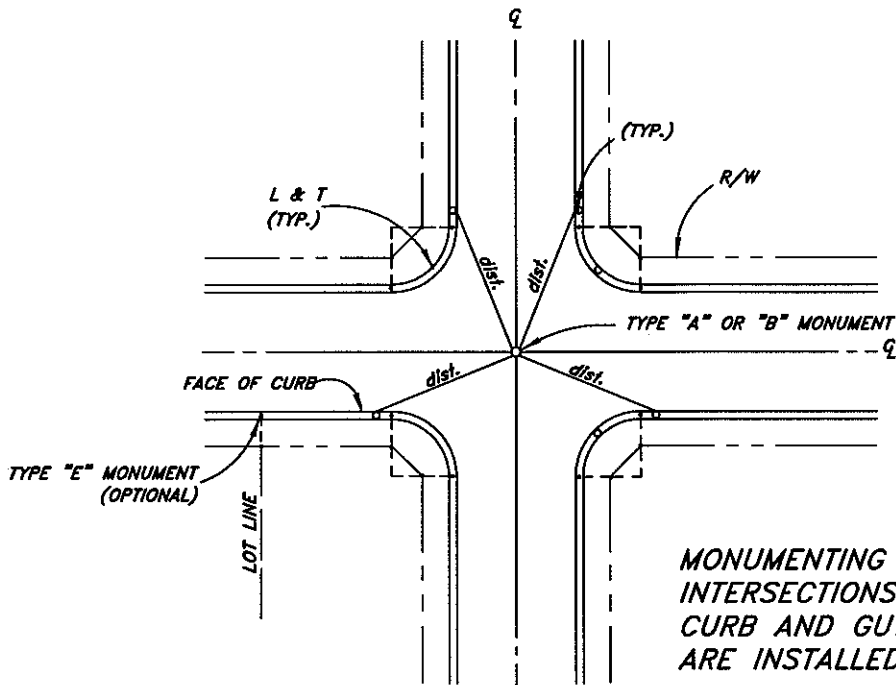
MONUMENTING STREET CENTER LINES WHERE CURBS ARE NOT REQUIRED.

REVISION		ENGINEERING	DATE 07/09
DATE	APPROVED		
		APPROVED BY	
		 CITY ENGINEER	
		08/31/2009	DATE

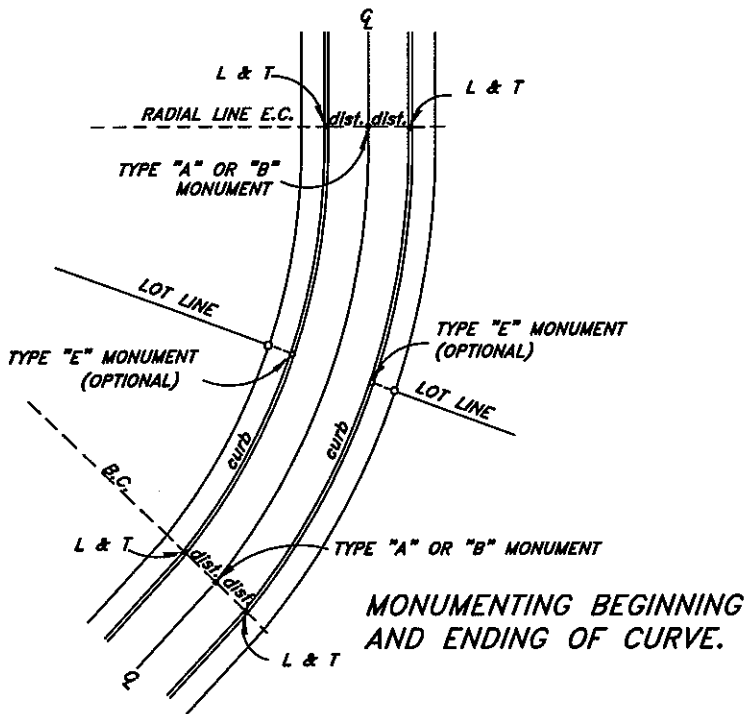
CITY OF LAKE ELSINORE
 PREPARED BY PUBLIC WORKS

TIE-OUT STANDARDS

3 OF 5
 NO.
601C



MONUMENTING STREET INTERSECTIONS WHERE CURB AND GUTTERS ARE INSTALLED.



MONUMENTING BEGINNING AND ENDING OF CURVE.

NOTES:

1. L&T SHOWN HEREON INDICATES LEAD AND TACK OR STEEL PIN MONUMENT SET IN CONCRETE CURB.
2. LEAD AND TACK OR STEEL PIN MONUMENT WITNESS TO PROPERTY CORNER MAY BE SET ("E" MONUMENT) IN LIEU OF SETTING FRONT LOT CORNERS.
3. THE P.I. OF THE CURVE C/O F A STREET MAY BE MONUMENTED IN LIEU OF E.C. AND B.C. IF THE P.I. FALLS WITHIN THE TRAVELLED WAY. IT SHALL BE REFERENCED WITH L&T'S IN CURB.

REVISION	DATE	APPROVED	ENGINEERING	DATE 07/09
			APPROVED BY	
			<i>Her A. Lomato</i>	08/31/2009
			CITY ENGINEER	DATE

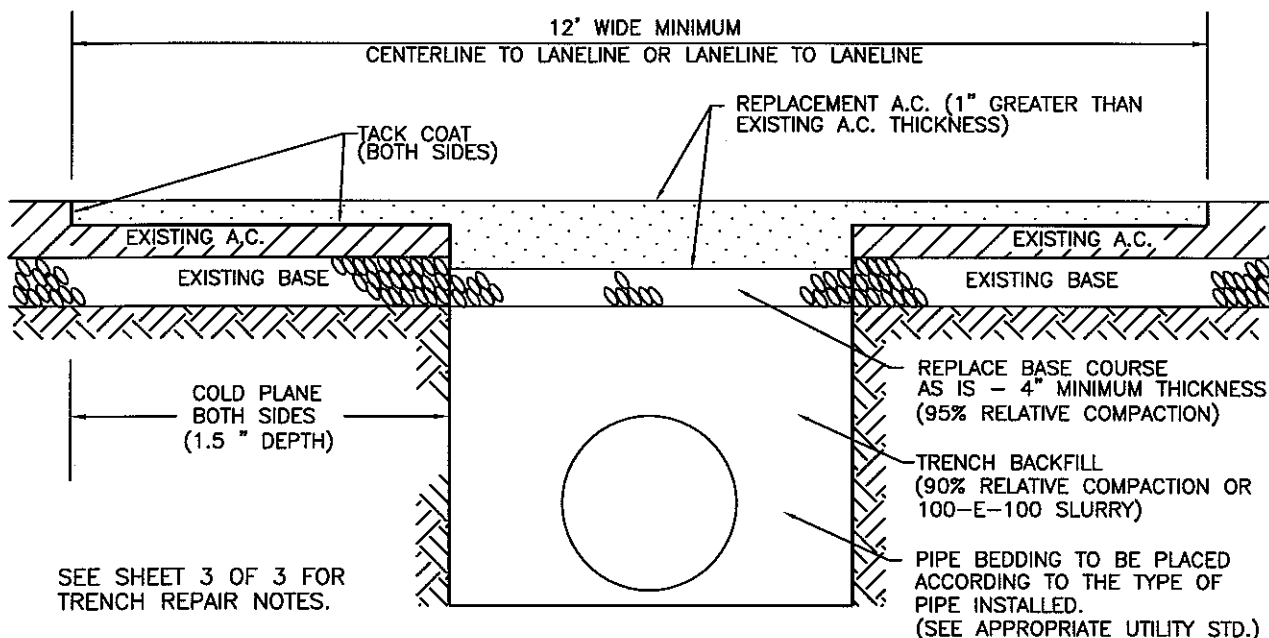
CITY OF LAKE ELSINORE
PREPARED BY PUBLIC WORKS

STREET CENTER LINE MONUMENT

4 OF 5
NO.
601D


STANDARD BEING REVISED

**CONTACT ENGINEERING TECHNICIAN
FOR INFORMATION**



NOTE:

Street sections newly paved, reconstructed, or overlaid within the last five (5) years will require special pavement replacement at the discretion of the City Engineer.

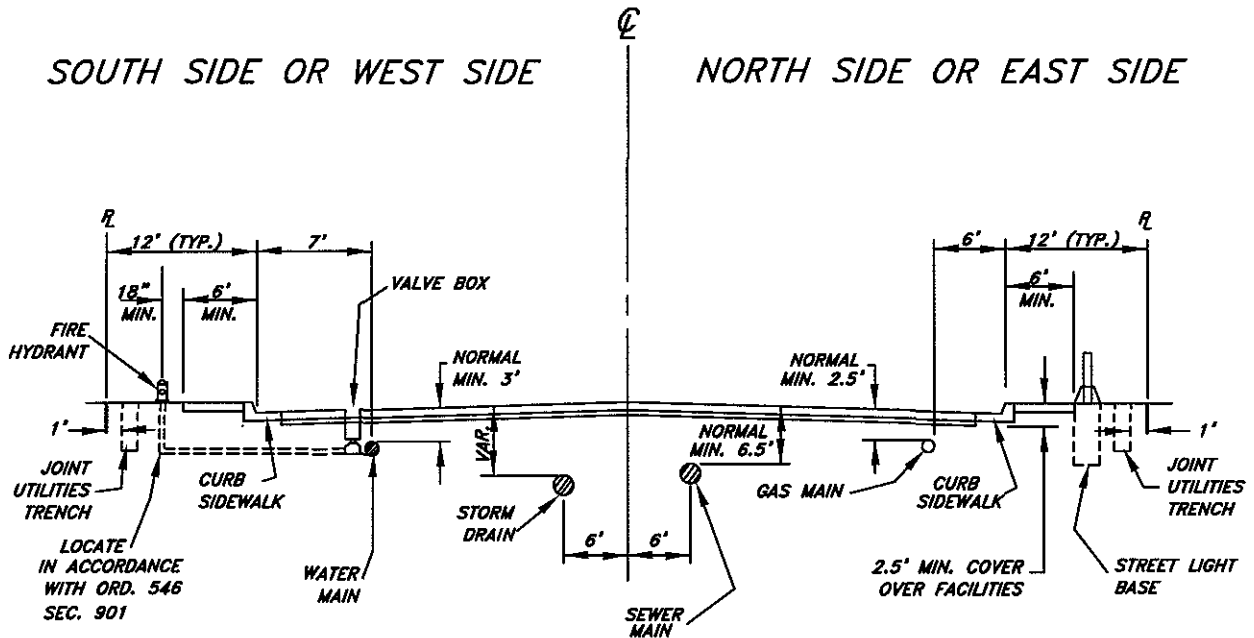
REVISION		ENGINEERING	DATE 07/09	CITY OF LAKE ELSINORE PREPARED BY PUBLIC WORKS	
DATE	APPROVED	APPROVED BY			
		 CITY ENGINEER		PARALLEL TRENCH BACKFILL AND ROADWAY REPAIR	
		08/31/2009 DATE		2 OF 3 NO. 602B	

STANDARD BEING REVISED

**CONTACT ENGINEERING TECHNICIAN
FOR INFORMATION**


SOUTH SIDE OR WEST SIDE

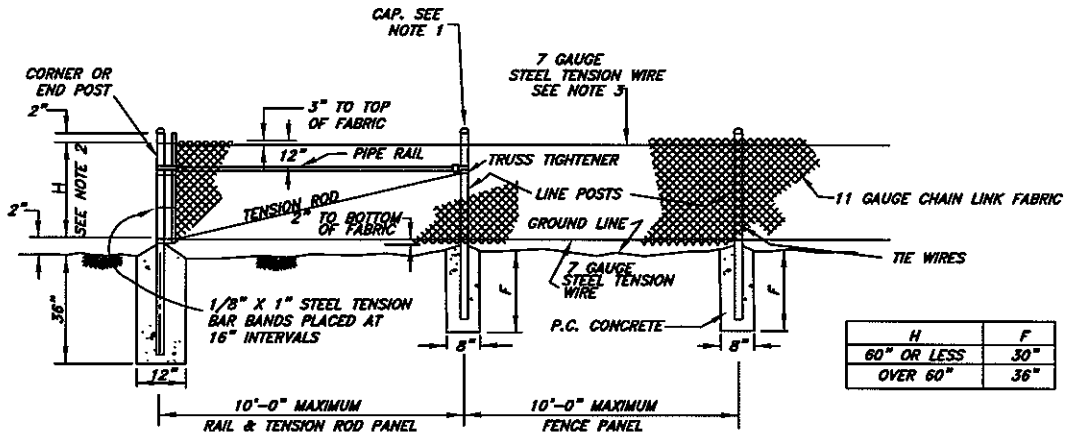
NORTH SIDE OR EAST SIDE



NOTES:

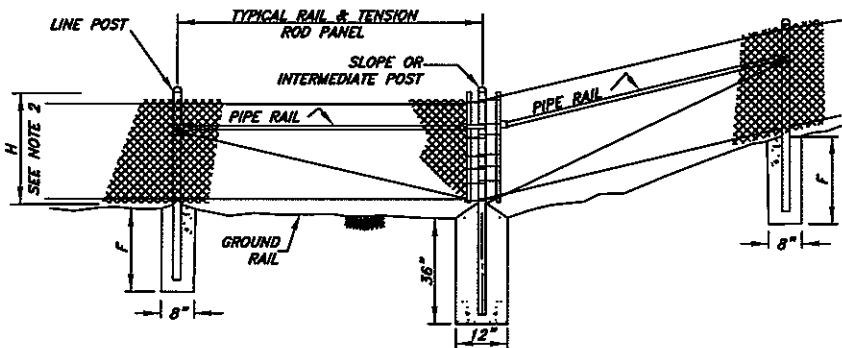
- 1.) LOCATION AND DEPTH OF EXISTING AND PROPOSED UTILITIES MUST BE PROVIDED BY THE SUBDIVIDER AND SHOWN ON ANY PLANS SUBMITTED TO THE CITY ENGINEER FOR APPROVAL.
- 2.) CHANGES MAY BE PERMITTED BY CITY ENGINEER IN CASES OF CONFLICTING FACILITIES.
- 3.) CONFLICTS BETWEEN UTILITY COMPANIES FACILITIES, EXISTING AND PROPOSED, MUST BE MUTUALLY RESOLVED BY THE UTILITY COMPANIES.
- 4.) FOR COMMERCIAL SIDEWALKS, THE FIRE HYDRANT SHALL BE PLACED WITHIN THE SIDEWALK 1.5' BEHIND FACE OF CURB.
- 5.) SEE STANDARD NOS. 500 AND 501 FOR LIGHTING DETAILS.

REVISION		ENGINEERING	DATE 07/09	CITY OF LAKE ELSINORE	
DATE	APPROVED				
		APPROVED BY		NORMAL LOCATION OF UNDERGROUND UTILITIES	
		 CITY ENGINEER			
		DATE 08/31/2009		NO. 603	



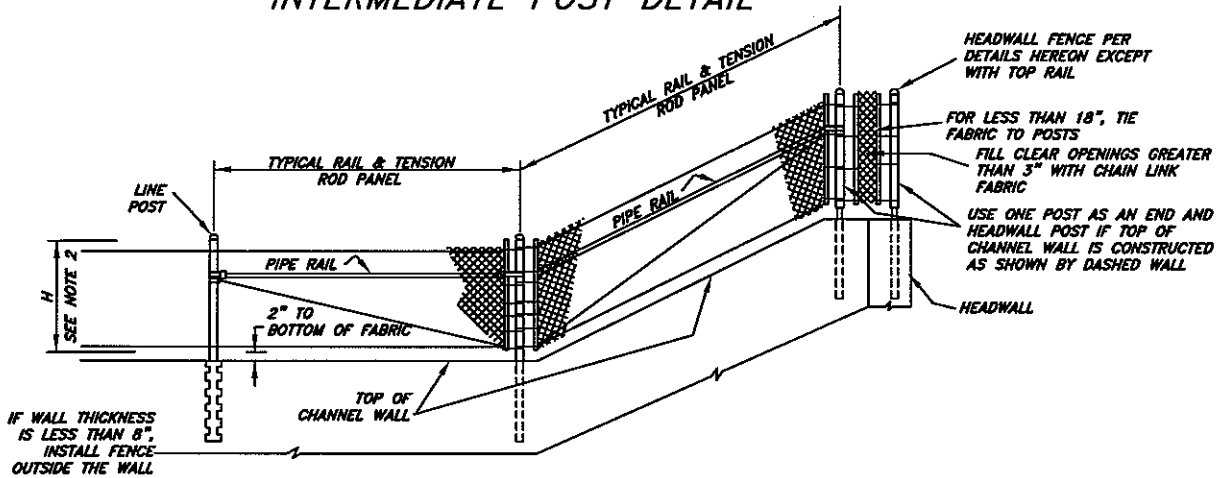
H	F
60" OR LESS	30"
OVER 60"	36"

TYPICAL FENCE ELEVATION



INTERMEDIATE AND SLOPE POSTS SHALL BE INSTALLED AT NOT MORE THAN 300' INTERVALS ALONG FENCE LINE AND AT GRADE CHANGES EXCEEDING 5% ALSO APPLICABLE TO CHANNEL FENCE

INTERMEDIATE POST DETAIL



CHANNEL WALL AND WINGWALL DETAIL AT HEADWALL

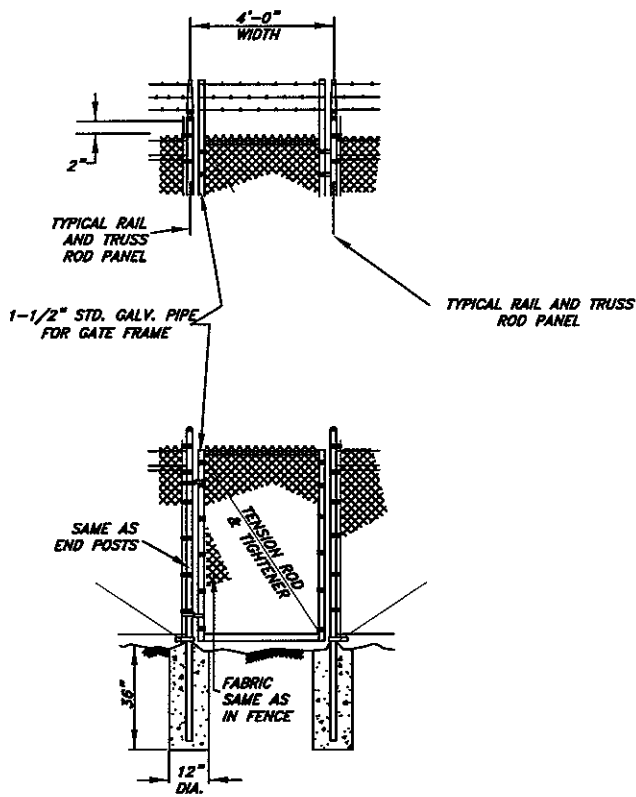
REVISION		ENGINEERING	DATE 07/09
DATE	APPROVED		
		APPROVED BY	
		<i>Ken A. Samala</i>	08/31/2009
		CITY ENGINEER	DATE

CITY OF LAKE ELSINORE

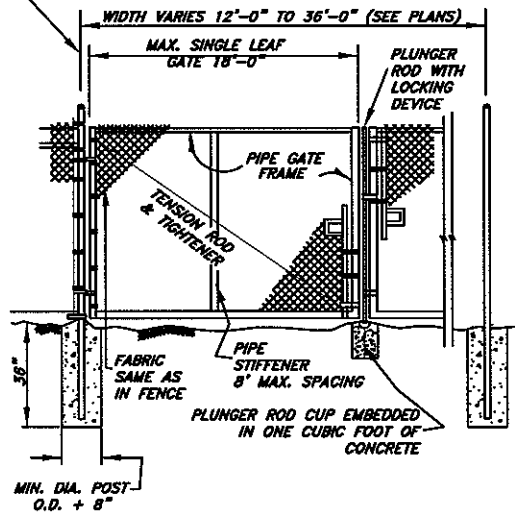
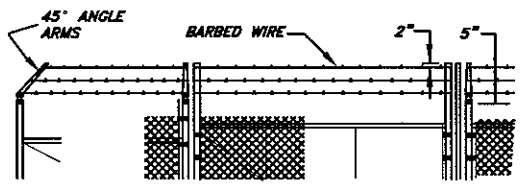
PREPARED BY PUBLIC WORKS

FENCE AND GATES FOR WALL AND CHANNEL

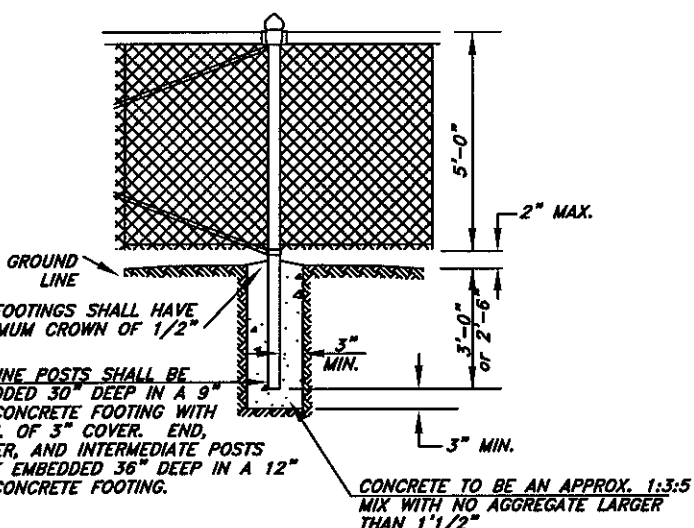
1 OF 2
NO.
604A



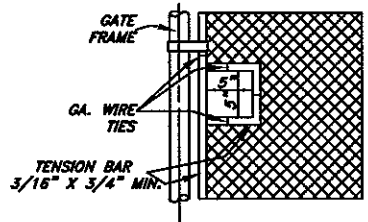
TYPICAL WALK GATE



TYPICAL DRIVE GATE



TYPICAL FENCE POST FOOTING EMBEDMENT DETAIL



DETAIL OF CUT-OUT FOR CHAIN AND LOCK

NOTES:

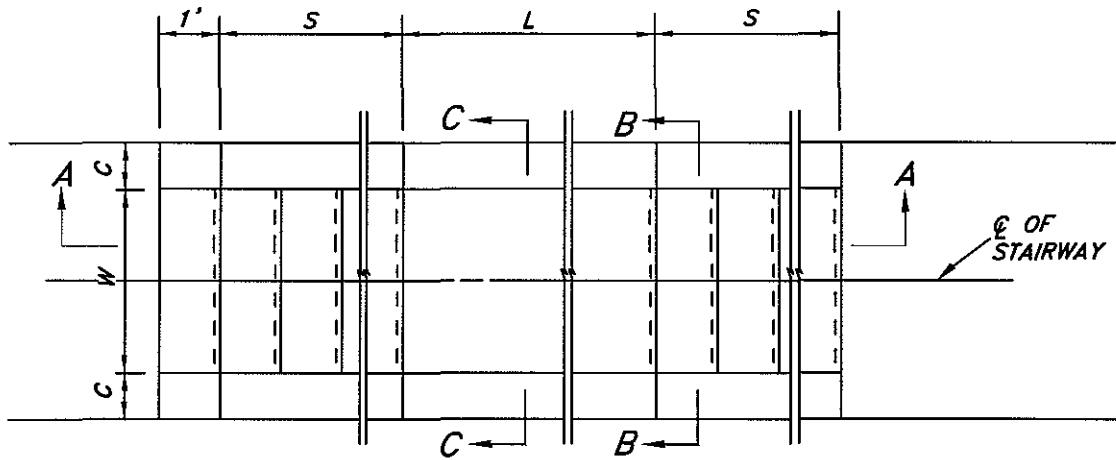
- 1.) SECURE DRIVE FIT GALVANIZED CAP TO POST WITH 1/4" ROUND HEAD RIVET.
- 2.) H DENOTES FABRIC WIDTH AND NOMINAL FENCE HEIGHT. H SHALL BE 5'-0" UNLESS OTHERWISE SPECIFIED.
- 3.) IF CHAIN LINK FENCE WITH TOP RAIL IS SPECIFIED, DELETE STEEL TENSION WIRE AT THE TOP AND THE PIPE RAILS AT THE INTERMEDIATE, END AND CORNER POSTS. EXTEND TENSION ROD TO THE TOP RAIL.
- 4.) BARBED WIRE SHALL BE USED ONLY WHEN SPECIFIED.
- 5.) ALL DATA SHOWN ON TYPICAL DETAILS SHALL BE APPLICABLE TO OTHER PERTINENT DETAILS.
- 6.) THE GALVANIZING OF THE FENCE FABRIC SHALL PRODUCE A ZINC COATING WEIGHING NOT LESS THAN 1.2 OZ. PER SQ.FT.

REVISION	ENGINEERING	DATE 07/09
DATE APPROVED		
	APPROVED BY	
	<i>Ken A. ...</i>	08/31/2009
	CITY ENGINEER	DATE

CITY OF LAKE ELSINORE
PREPARED BY PUBLIC WORKS

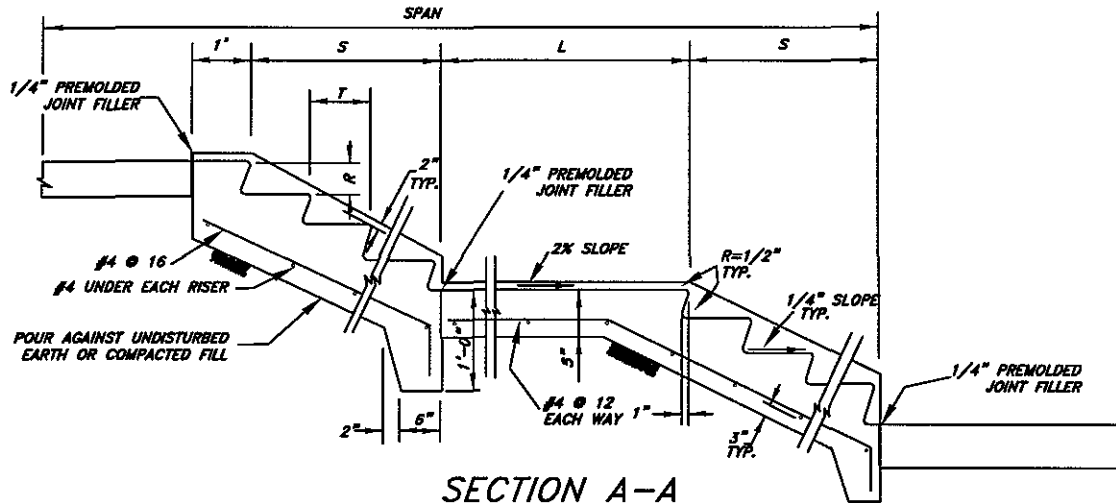
HIGHWAY CHAIN LINK FENCE AND GATES

2 OF 2
NO. 604B

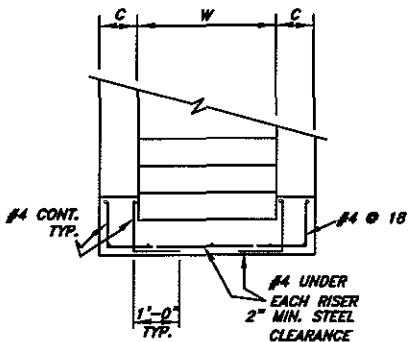


NOTE: SEE PROJECT PLAN FOR STAIR AND HANDRAIL DETAILS OR STANDARD PLAN NO. 607

PLAN

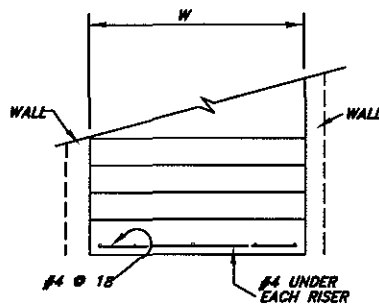


SECTION A-A

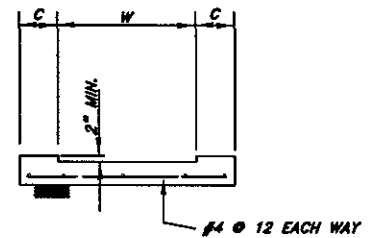


TYPE A


SECTION B-B

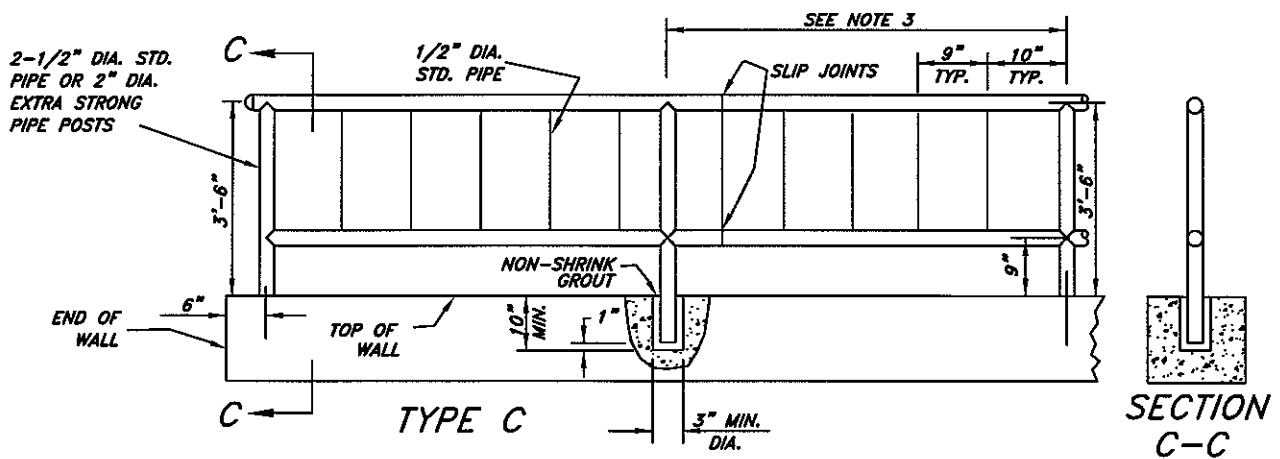
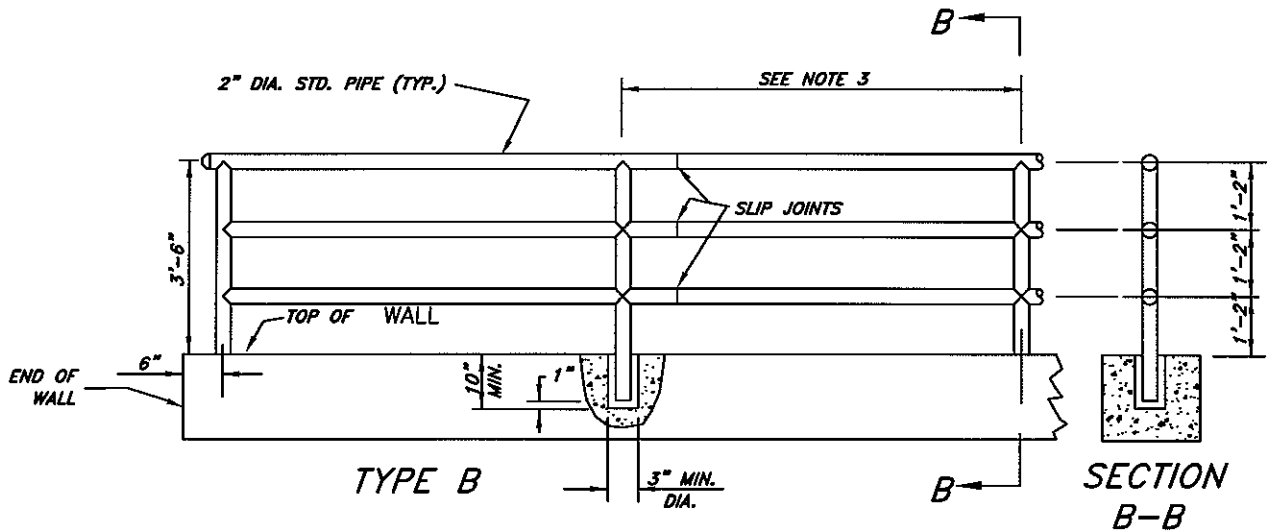
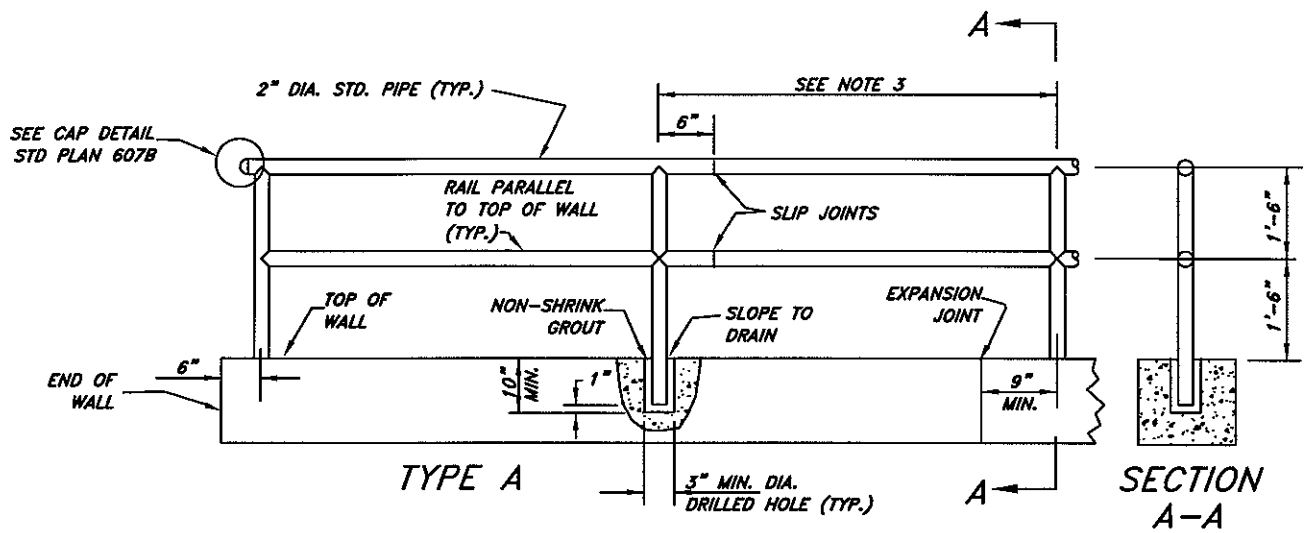


TYPE B



SECTION C-C

REVISION		ENGINEERING	DATE 07/09	CITY OF LAKE ELSINORE	
DATE	APPROVED	APPROVED BY			
		 CITY ENGINEER		REINFORCED CONCRETE STAIRWAY	NO. 606
			08/31/2009 DATE		

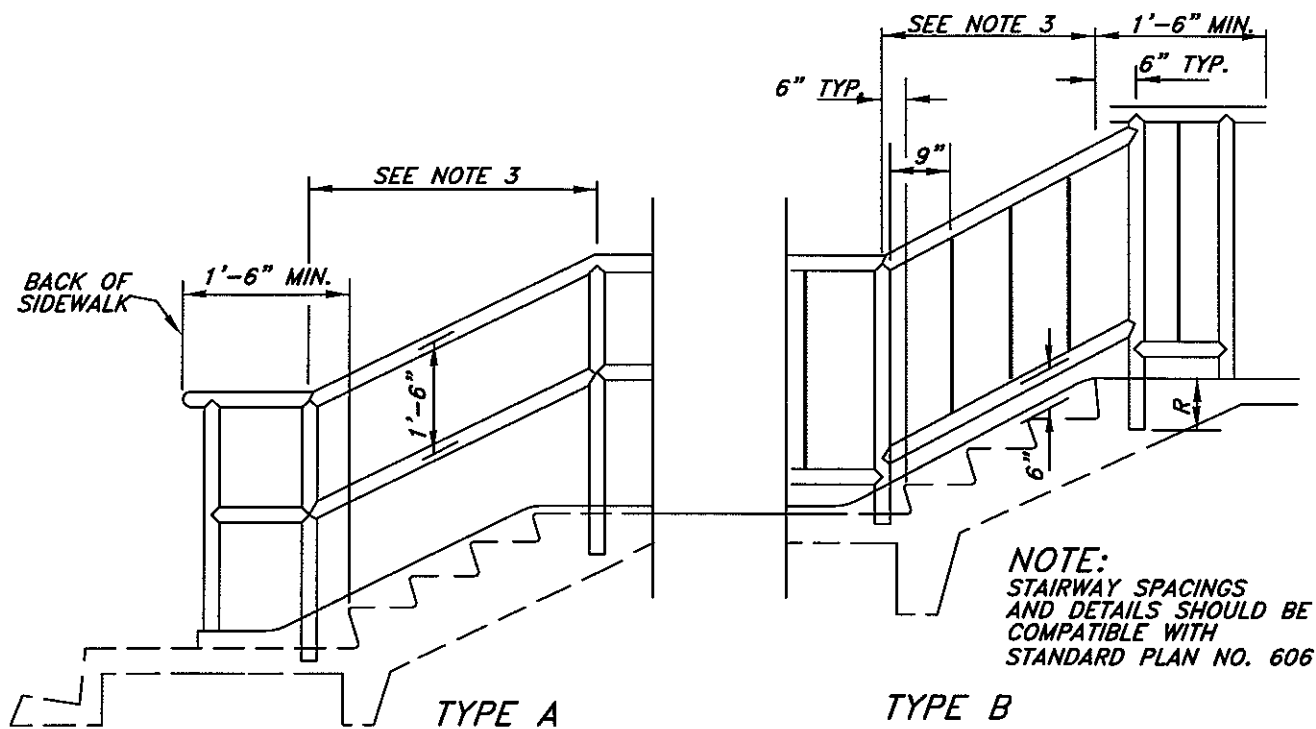


REVISION		ENGINEERING	DATE 07/09
DATE	APPROVED		
		APPROVED BY	
		<i>Ken A. Sanchez</i>	08/31/2009
		CITY ENGINEER	DATE

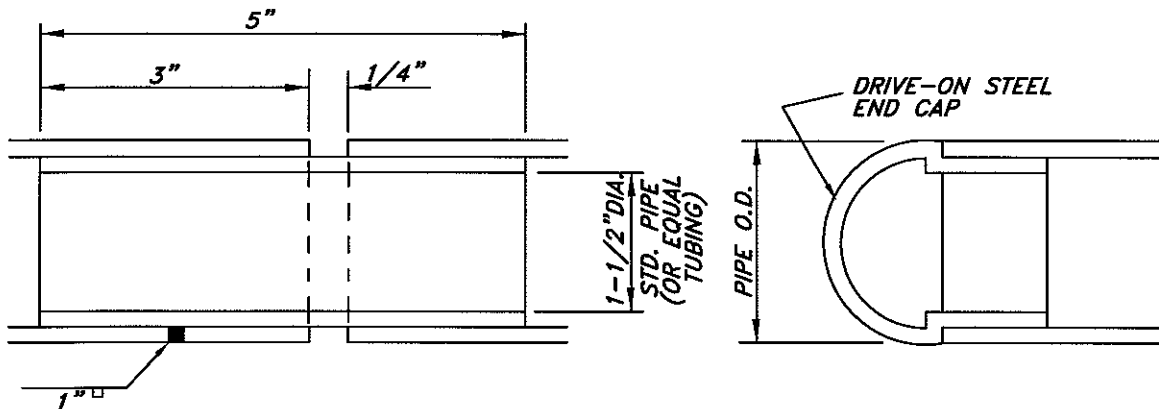
CITY OF LAKE ELSINORE
 PREPARED BY PUBLIC WORKS

METAL HAND RAILINGS

1 OF 2
 NO. 607A



HANDRAIL INSTALLATION ON STAIRWAYS



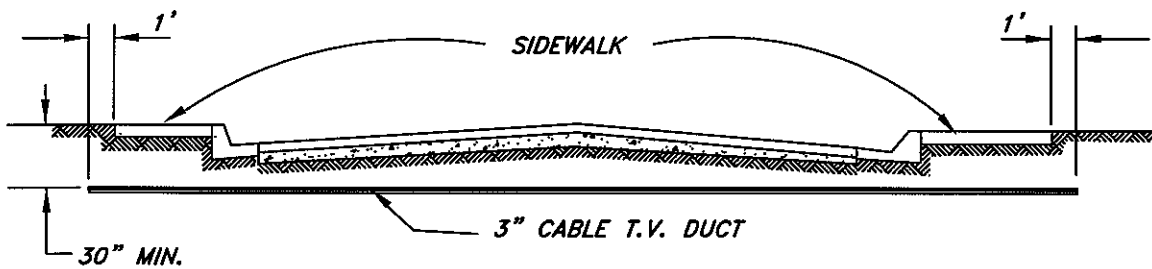
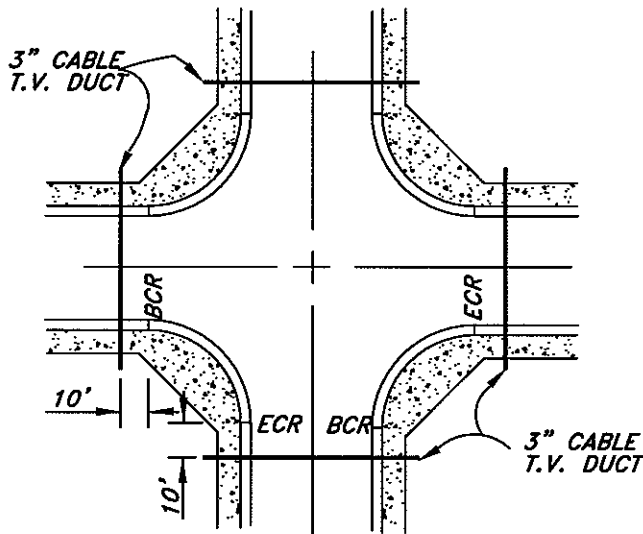
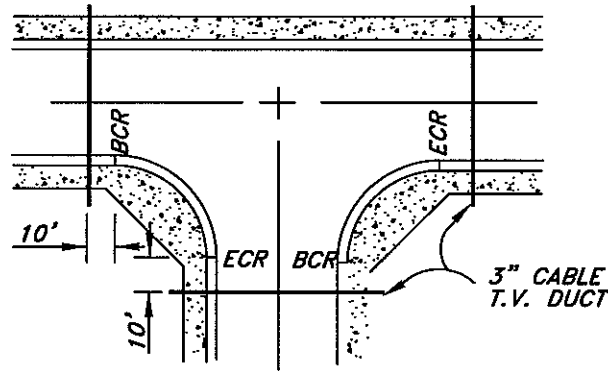
SLIP JOINT DETAIL

CAP DETAIL
FOR RAIL END


NOTES:

- 1.) TYPE B OR TYPE C SHALL BE USED WHERE ADJACENT GRADE IS MORE THAN 2'-6" BELOW LANDING OR SIDEWALK FINISHED SURFACE.
- 2.) PROVIDE SLIP JOINTS AT STAIRWAY EXPANSION JOINTS AND AT EVERY 24 FEET ON CENTER MAXIMUM.
- 3.) MAXIMUM SPACING OF POST SHALL BE 8 FEET ON STRAIGHT ALIGNMENT 6 FEET ON CURVED ALIGNMENT LESS THAN 30 FEET RADIUS. SPACING SHALL BE UNIFORM BETWEEN CHANGES IN ALIGNMENT.

REVISION		ENGINEERING	DATE 07/09	CITY OF LAKE ELSINORE	PREPARED BY PUBLIC WORKS
DATE	APPROVED	APPROVED BY			
		 CITY ENGINEER			2 OF 2
		08/31/2009 DATE		METAL HAND RAILINGS	NO. 607B



TYPICAL CROSS SECTION

REVISION DATE APPROVED		ENGINEERING DATE 07/09	CITY OF LAKE ELSINORE PREPARED BY PUBLIC WORKS	
APPROVED BY  CITY ENGINEER		DATE 08/31/2009		
				NO. 608

STANDARD BEING REVISED

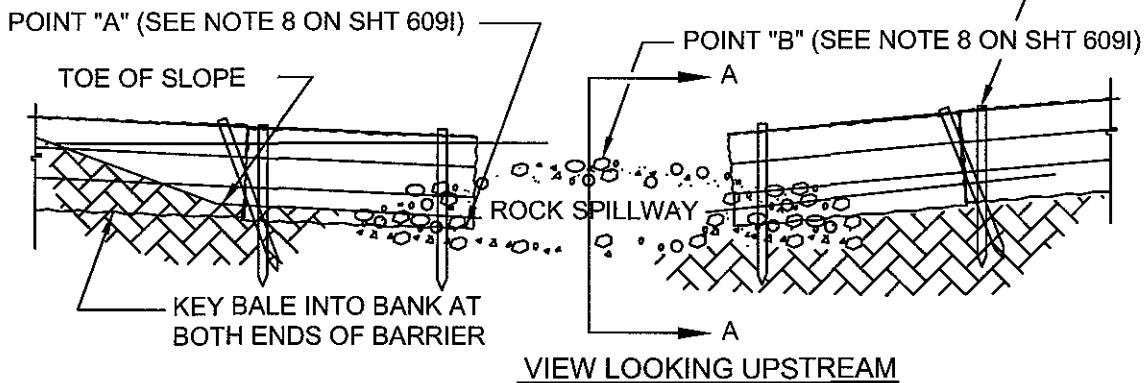
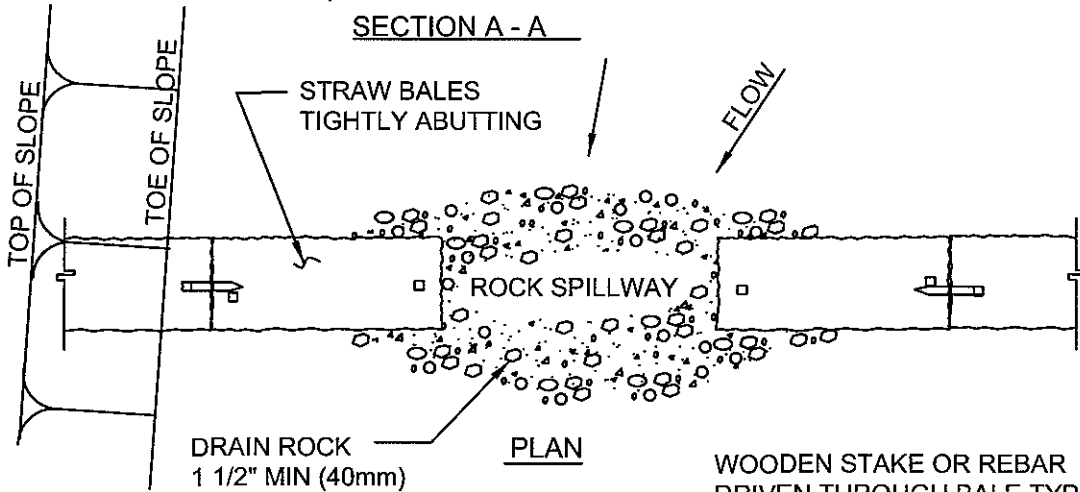
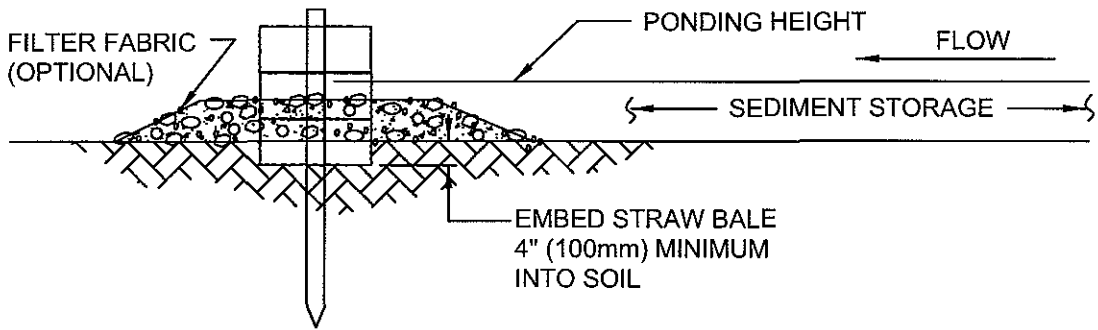
**CONTACT ENGINEERING TECHNICIAN
FOR INFORMATION**

STANDARD BEING REVISED

**CONTACT ENGINEERING TECHNICIAN
FOR INFORMATION**

STANDARD BEING REVISED

**CONTACT ENGINEERING TECHNICIAN
FOR INFORMATION**

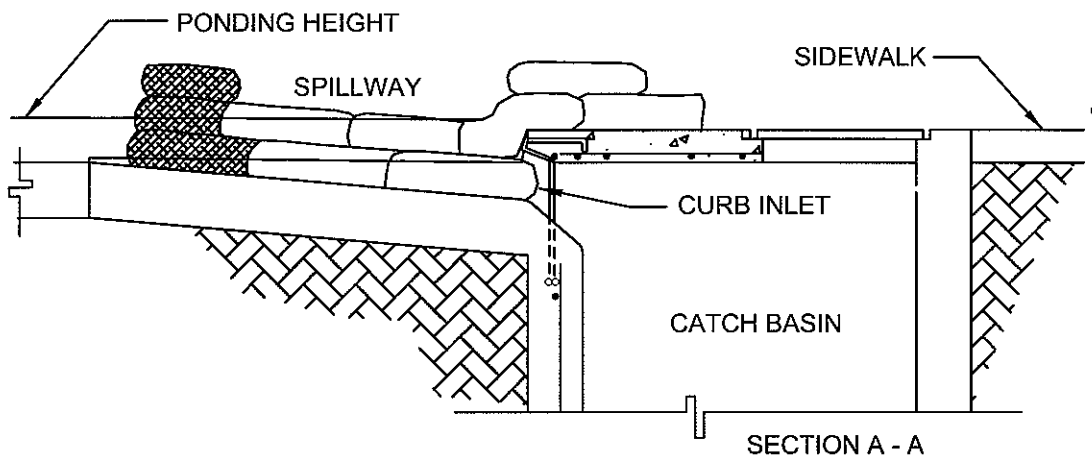
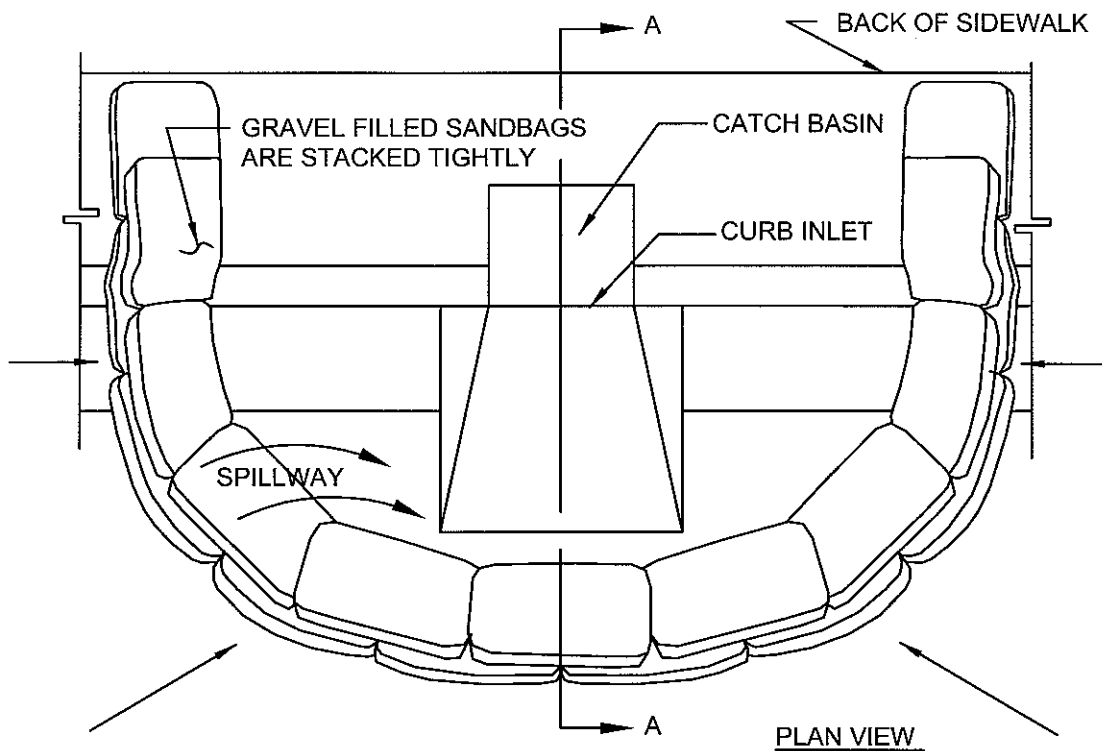


NOTES:

1. PLACE BALES PERPENDICULAR TO FLOW.
2. EMBED THE BALES 4" (100mm) INTO THE SOIL AND "KEY" THE END BALES INTO THE CHANNEL BANKS TO PREVENT FLOW AROUND THE BALES.
3. BALES PLACED IN A ROW WITH ENDS TIGHTLY ABUTTING.
4. POINT "A" SHALL BE HIGHER THAN POINT "B".
5. SPILLWAY HEIGHT SHALL NOT EXCEED 24" (0.6m)

* SEE EROSION CONTROL NOTES, CITY STANDARD NUMBER 609


<table border="1"> <thead> <tr> <th>REVISION</th> <th>DATE</th> <th>APPROVED</th> </tr> </thead> <tbody> <tr> <td> </td> <td> </td> <td> </td> </tr> <tr> <td> </td> <td> </td> <td> </td> </tr> <tr> <td> </td> <td> </td> <td> </td> </tr> <tr> <td> </td> <td> </td> <td> </td> </tr> </tbody> </table>		REVISION	DATE	APPROVED													<p>ENGINEERING DATE 07/09</p> <p>APPROVED BY</p> <p><i>For a Samala</i> 08/31/2009 CITY ENGINEER DATE</p>	<p>CITY OF LAKE ELSINORE</p> <p>PREPARED BY PUBLIC WORKS</p> <p>SEMI-PERVIOUS STRAW BALE SEDIMENT BARRIER</p>	<p>NO. 610</p>
REVISION	DATE	APPROVED																	

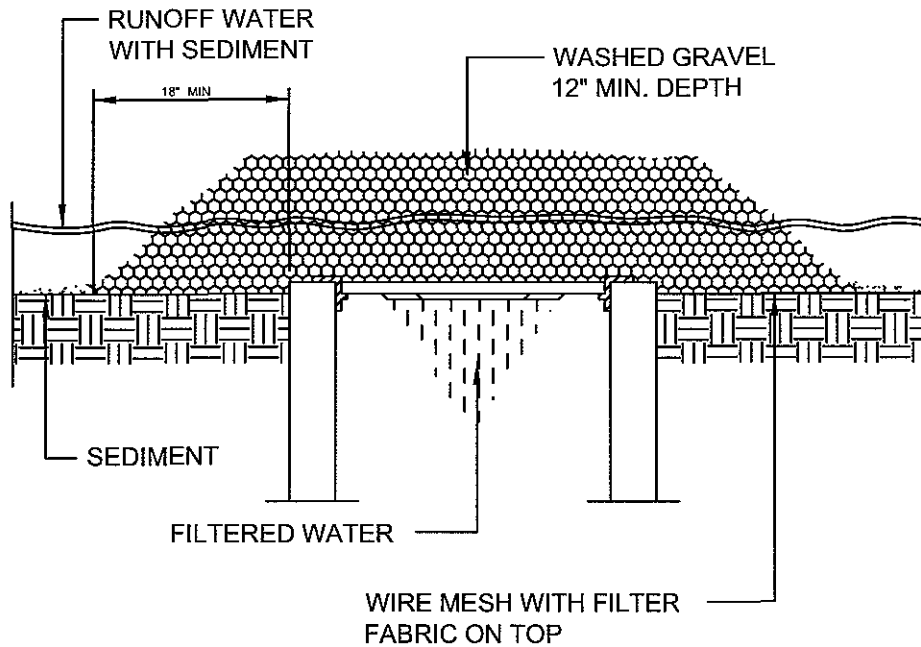


NOTES:

1. PLACE CURB TYPE SEDIMENT BARRIERS ON GENTLY SLOPING STREET SEGMENTS WHERE WATER CAN POND AND ALLOW SEDIMENT TO SEPARATE FROM RUNOFF.
2. SANDBAGS, OF EITHER BURLAP OR WOVEN GEOTEXTILE FABRIC, ARE FILLED WITH GRAVEL, LAYERED AND PACKED TIGHTLY.
3. LEAVE ONE SANDBAG GAP IN THE TOP ROW TO PROVIDE A SPILLWAY FOR OVER FLOW.
4. INSPECT BARRIERS AND REMOVE SEDIMENT AFTER EACH STORM EVENT. SEDIMENT AND GRAVEL MUST BE REMOVED FROM THE TRAVEL WAY IMMEDIATELY.

* SEE EROSION CONTROL NOTES, CITY STANDARD NUMBER 609

REVISION		ENGINEERING	DATE 07/09	CITY OF LAKE ELSINORE	
DATE	APPROVED	APPROVED BY		PREPARED BY PUBLIC WORKS	
		 CITY ENGINEER		TEMPORARY DESILTING BASIN	
		08/31/2009 DATE		NO. 611	



GRAVEL AND WIRE MESH FILTER

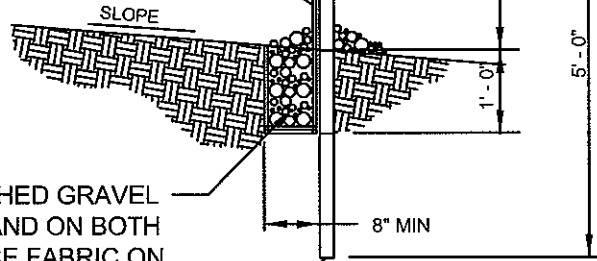
- A. PLACE WIRE MESH OVER THE CATCH BASIN SO THAT THE WIRE EXTENDS A MINIMUM OF 1 FOOT BEYOND EACH SIDE OF THE CATCH BASIN. USE HARDWARE CLOTH OR COMPARABLE WIRE MESH WITH 1/2 INCH OPENINGS. IF MORE THAN ONE STRIP OF MESH IS NECESSARY, OVERLAP THE STRIPS. PLACE FILTER FABRIC OVER WIRE MESH.
- B. PLACE 3/4 TO 3 INCH GRAVEL OVER THE FILTER/WIRE MESH. THE DEPTH OF WASHED GRAVEL SHOULD BE AT LEAST 12 INCHES OVER THE ENTIRE INLET OPENING.
- C. IF THE WASHED GRAVEL FILTER BECOMES CLOGGED WITH SEDIMENT, THE WASHED GRAVEL MUST BE PULLED AWAY FROM THE INLET AND CLEANED OR REPLACED. SINCE CLEANING OF WASHED GRAVEL AT A CONSTRUCTION SITE MAY BE DIFFICULT, AN ALTERNATIVE APPROACH WOULD BE TO USE THE CLOGGED WASHED GRAVEL AS FILL AND PUT FRESH WASHED GRAVEL AROUND THE INLET.

* SEE EROSION CONTROL NOTES, CITY STANDARD NUMBER 609

REVISION		ENGINEERING	DATE 07/09	CITY OF LAKE ELSINORE	
DATE	APPROVED	APPROVED BY		PREPARED BY PUBLIC WORKS	
				CB PROJECTION DETAIL	
				NO. 612	
		CITY ENGINEER	DATE		

FILTER FABRIC MATERIAL 60" WIDE ROLLS. USE STAPLES OR WIRE RINGS TO ATTACH FABRIC TO WIRE.

2"X2"X14 GA. WIRE FABRIC OR EQUIV. FILTER FABRIC - SECURE TO POST WASHED GRAVEL (WHERE REQUIRED)



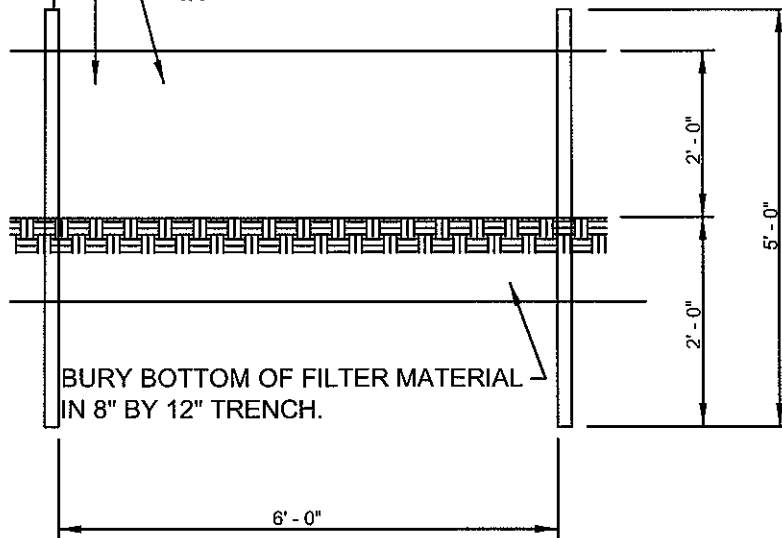
PROVIDE 3/4"-1.5" WASHED GRAVEL BACKFILL IN TRENCH AND ON BOTH SIDES OF FILTER FABRIC ON THE SURFACE.

2"X4" WOOD POST ALT: STEEL FENCE POSTS 6' MAX. SPACING.

2" BY 4" WOOD POSTS, STANDARD OR BETTER OR EQUAL ALTERNATE: STEEL FENCE POSTS.

FILTER FABRIC MATERIAL 60" WIDE ROLLS. USE STAPLES OR WIRE RINGS TO ATTACH FABRIC TO WIRE.

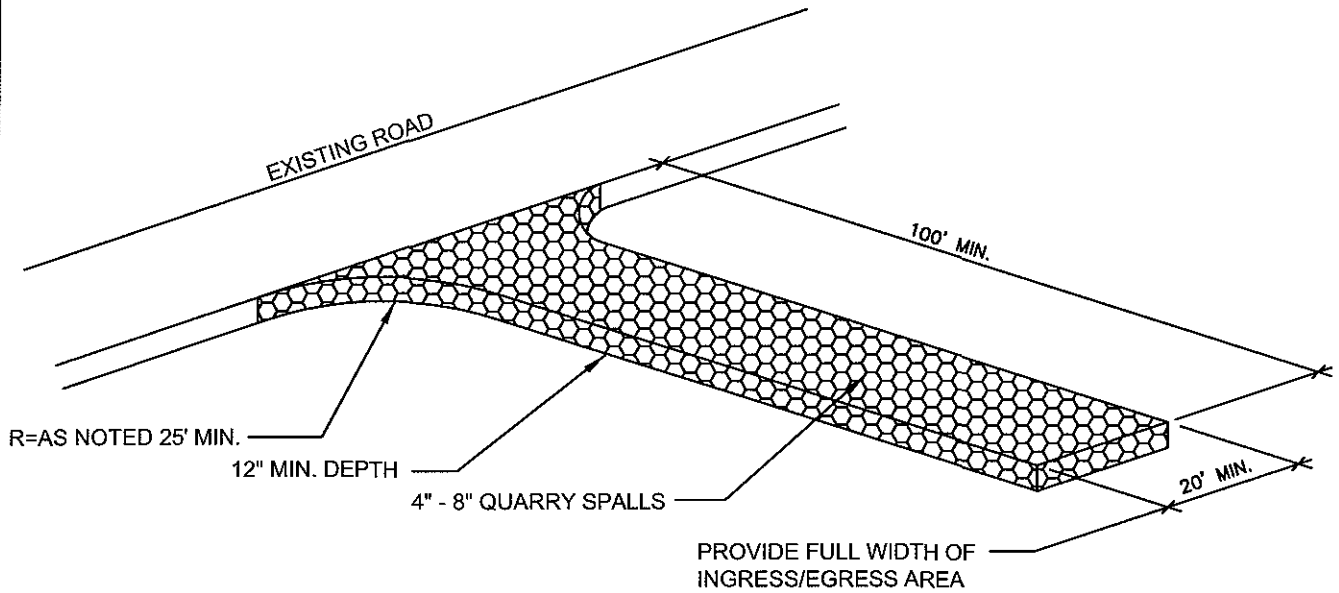
2" BY 2" BY 14 GA. WIRE FABRIC OR EQUIV.




BURY BOTTOM OF FILTER MATERIAL IN 8" BY 12" TRENCH.

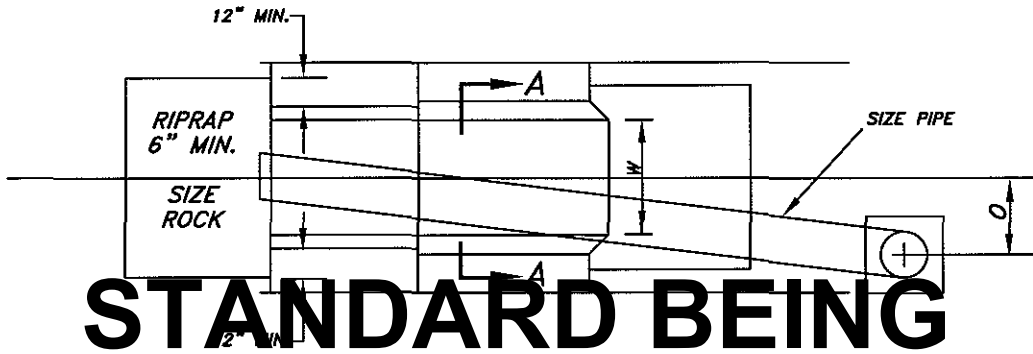
* SEE EROSION CONTROL NOTES, CITY STANDARD NUMBER 609

<table border="1"> <thead> <tr> <th>REVISION</th> <th>DATE</th> <th>APPROVED</th> </tr> </thead> <tbody> <tr> <td> </td> <td> </td> <td> </td> </tr> <tr> <td> </td> <td> </td> <td> </td> </tr> <tr> <td> </td> <td> </td> <td> </td> </tr> <tr> <td> </td> <td> </td> <td> </td> </tr> </tbody> </table>		REVISION	DATE	APPROVED													<p>ENGINEERING DATE 07/09</p> <p>APPROVED BY</p> <p><i>Heath Samuels</i> CITY ENGINEER</p> <p>08/31/2009 DATE</p>	<p>CITY OF LAKE ELSINORE</p> <p>PREPARED BY PUBLIC WORKS</p>	<p>SILT FENCE DETAIL</p> <p>NO. 613</p>
REVISION	DATE	APPROVED																	



* SEE EROSION CONTROL NOTES, CITY STANDARD NUMBER 609

REVISION		ENGINEERING	DATE 07/09	CITY OF LAKE ELSINORE PREPARED BY PUBLIC WORKS	
DATE	APPROVED	APPROVED BY			
		 CITY ENGINEER		08/31/2009 DATE	NO. 614
		STABILIZED CONSTRUCTION ENTRANCE			

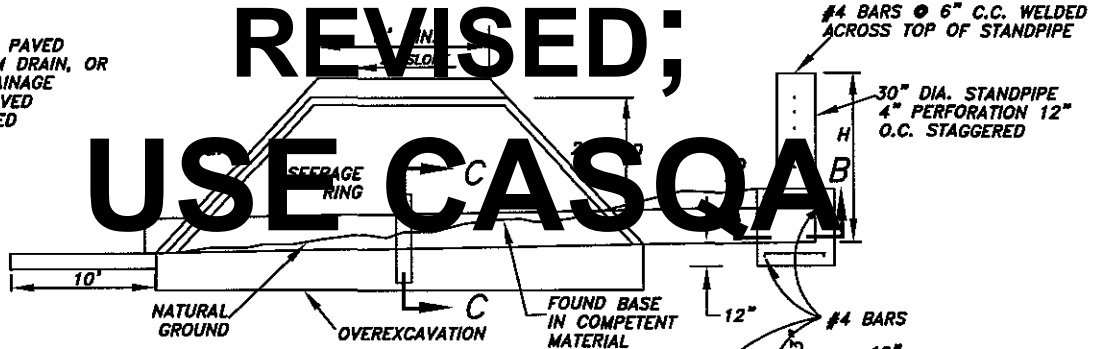


STANDARD BEING

REVISED;

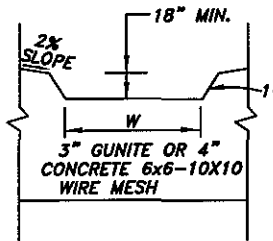
USE CASQA

DISCHARGE TO PAVED STREET, STORM DRAIN, OR APPROVED DRAINAGE COURSE IN PAVED OR SANDBAGGED CHANNEL.



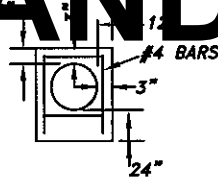
COMPACTION REPORTS ARE TO BE SUBMITTED ON EACH DIKE PRIOR TO FINAL APPROVAL

STANDARD



Section "A-A"

GUNITE OR CONCRETE AT THE OVERFLOW IS TO EXTEND DOWN EACH FACE OF THE DIKE



Section "C-C"

SE-2 AND/OR SE-3

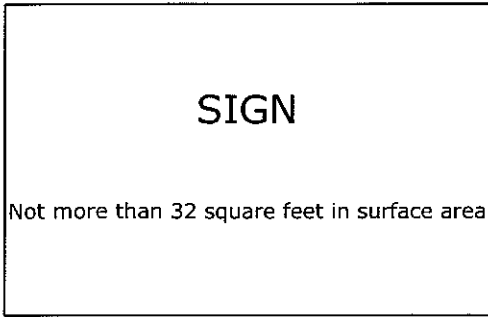
NOTES

1. INDICATE DIMENSIONS FOR D, H, W, AND O ON THE PLANS.
2. THE TOP OF THE STANDPIPE MUST BE SET AT THE ELEVATION OF THE TOP OF THE DIKE.
3. THE SPILLWAY MUST BE CONSTRUCTED WITH CONCRETE OR GUNITE WHEN D EXCEEDS 3' OR WHEN THE STORAGE VOLUME EXCEEDS 1 ACRE FOOT (1600 CUBIC YARDS). SANDBAGGED SPILLWAYS MAY BE ALLOWED FOR LESSER DEPTHS AND STORAGE VOLUMES DEPENDING ON EXISTING DOWNSTREAM DEVELOPMENT.
4. THE DIKE SHALL BE COMPACTED TO 95% COMPACTION.

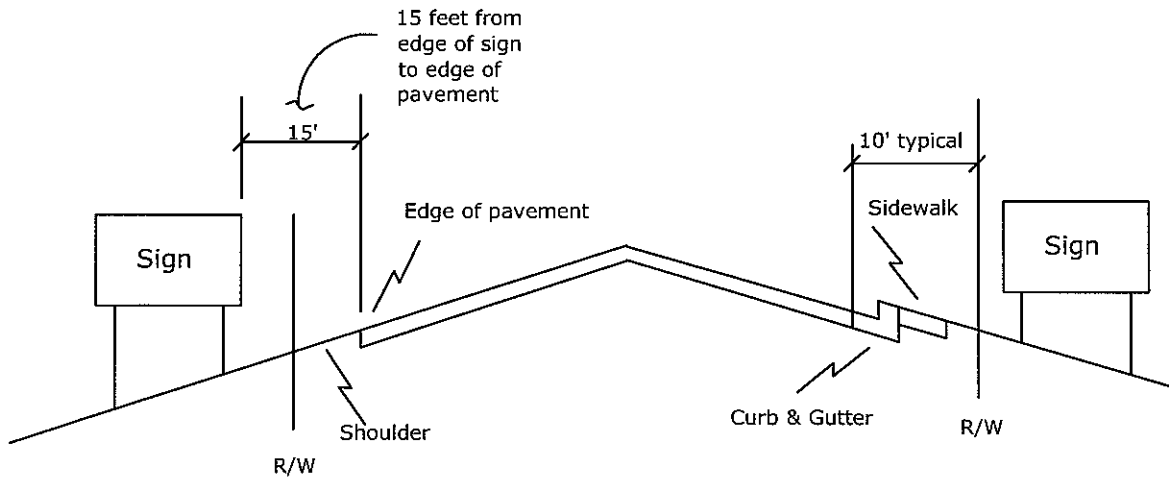
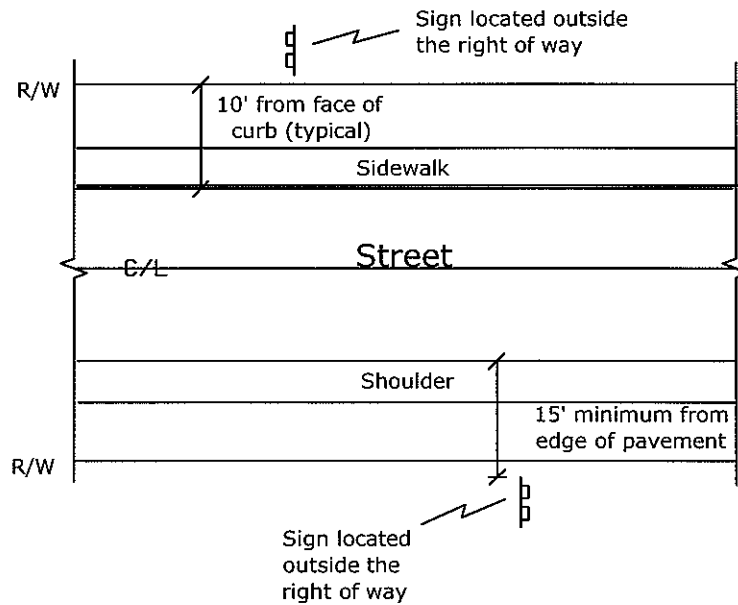
REVISION		ENGINEERING		DATE 07/09		CITY OF LAKE ELSINORE	
DATE	APPROVED	APPROVED BY					
		<i>Freda Lembo</i>		08/31/2009		MINIMUM DESILTING BASIN	
		CITY ENGINEER		DATE			

Standards For Non-Commercial Signs During Election Period

Not more than 6' in height



For Right of Way assistance, please contact City of Lake Elsinore Engineering Division at 951-674-3124, ext 241.



<table border="1"> <tr> <th>REVISION</th> <th>DATE</th> <th>APPROVED</th> </tr> <tr> <td> </td> <td> </td> <td> </td> </tr> <tr> <td> </td> <td> </td> <td> </td> </tr> <tr> <td> </td> <td> </td> <td> </td> </tr> <tr> <td> </td> <td> </td> <td> </td> </tr> </table>		REVISION	DATE	APPROVED													<p>ENGINEERING DATE 07/09</p> <p>APPROVED BY</p> <p><i>[Signature]</i> 08/31/2008 CITY ENGINEER DATE</p>	<p>CITY OF LAKE ELSINORE</p> <p>PREPARED BY PUBLIC WORKS</p>	<p>NON COMMERCIAL ELECTION SIGNAGE STANDARD</p>	<p>NO. 616</p>
REVISION	DATE	APPROVED																		