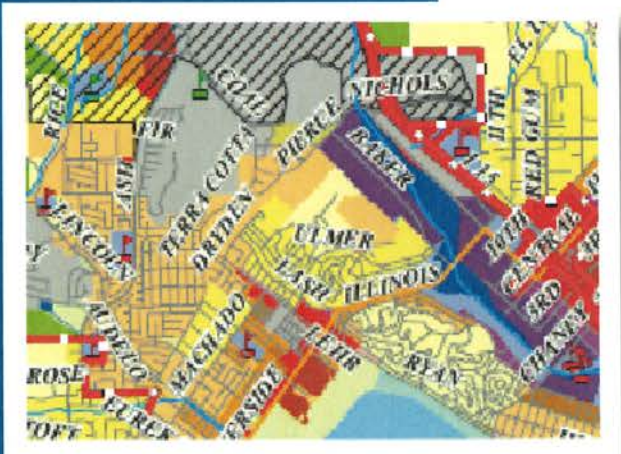


APPENDIX B GENERAL PLAN/ZONING COMPATIBILITY MATRIX

ZONING DISTRICTS	GENERAL PLAN DESIGNATIONS												
	RESIDENTIAL					MEDIUM DENSITY		COMMERCIAL			PUBLIC		OTHER
	ER-10	ER-15	ER-20	ER-25	ER-30	MD-1	MD-2	C-1	C-2	C-3	P-1	P-2	Other
ER-10 Rural Residential	■												
ER-15 Rural Residential	■												
ER-20 Rural Single-Family Residential	■												
ER-25 Single-Family Residential	■												
ER-30 Single-Family Residential	■												
MD-1 Medium Density Residential						■	■						
MD-2 Medium Density Residential						■	■						
C-1 Community Center													
C-2 Office													
C-3 Neighborhood Commercial													
P-1 Public Office													
P-2 Public Office													
Other													

■ - Zones that are compatible with General Plan designations.
 □ - Zones that may be compatible under special circumstances.





**CITY OF LAKE ELSINORE
GENERAL PLAN**

**APPENDIX B
GENERAL PLAN/ZONING COMPATIBILITY
MATRIX**

**ADOPTED BY THE CITY COUNCIL ON DECEMBER 13, 2011
BY RESOLUTION NO. 2011-071**

APPENDIX B

GENERAL PLAN/ZONING COMPATIBILITY MATRIX

ZONING DISTRICTS		GENERAL PLAN DESIGNATIONS																
		RESIDENTIAL						MIXED USE		COMMERCIAL				INDUSTRIAL		OTHER		
		Hillside	Lakeside	Low Density	Low-Medium Density	Medium Density	High Density	Residential Mixed-Use	Commercial Mixed Use	Neighborhood	General	Gateway	Downtown Recreational	Tourist	Business Professional	Limited	Public/Institutional	Open Space/Recreational
Residential	R-M-R Rural Mountainous	■		■														
	R-R Rural Residential	□		■														
	R-E Estate Single-Family Residential	□		■														
	R-H Hillside Single-Family Residential	■		■	■	■												
	R-1 Single-Family Residential				■	■	■											
	R-2 Medium Density Residential					■	■	■	■									
	R-3 High Density Residential						■	■	■									
	MC Mobilehome Community					■	■											
Open Space	L Lakeshore		■															
	OS Open Space															■	■	■
	R Recreation											■				□	■	
P.U.D.	P-I Public/Institutional	■	■	■	■	■	■	■	■	■	■	■	■	■	■	■	■	
	PUD Planned Unit Development																	
Commercial	C-O Commercial Office							■	■	■				■				
	C-1 Neighborhood Commercial							■	■	■			□					
	C-2 General Commercial							■	■	■	■	□	□	□				
	C-P Commercial Park							■	■	■	■	■	■					
Industrial	C-M Commercial Manufacturing													■	□			
	M-1 Limited Manufacturing													■	■			
	M-2 General Manufacturing														■			
	M-3 Mineral Resources and Related Manufacturing	May be compatible under special circumstances in the Extractive Overlay designation.																
Mixed-Use	RMU Residential Mixed-Use							■										
	CMU Commercial Mixed-Use								■	■	■							

LEGEND
 ■ - Zones that are compatible with General Plan designations.
 □ - Zones that may be compatible under special circumstances.

Revisions Adopted by the City Council on April 23, 2013 and on September 23, 2014.