

A PHASE I CULTURAL RESOURCES SURVEY FOR THE LAKESHORE DRIVE PROJECT

LAKE ELSINORE, CALIFORNIA

APN 379-230-001 and -002

Submitted to:

**City of Lake Elsinore
130 South Main Street
Lake Elsinore, California 92530**

Prepared for:

**EPD Solutions
2355 Main Street, Suite 100
Irvine, California 92614**

Prepared by:

**Brian F. Smith and Associates, Inc.
14010 Poway Road, Suite A
Poway, California 92064**



March 14, 2022

Archaeological Database Information

Author(s): Brian F. Smith and Elena C. Goralogia

Consulting Firm: Brian F. Smith and Associates, Inc.
14010 Poway Road, Suite A
Poway, California 92064
(858) 679-8218

Report Date: March 14, 2022

Report Title: A Phase I Cultural Resources Survey for the Lakeshore Drive Project, Lake Elsinore, California

Prepared for: EPD Solutions
2355 Main Street, Suite 100
Irvine, California 92614

Submitted to: City of Lake Elsinore
130 South Main Street
Lake Elsinore, California 92530

Submitted by: Brian F. Smith and Associates, Inc.
14010 Poway Road, Suite A
Poway, California 92064

Assessor's Parcel Number(s): 379-230-001 and -002

USGS Quadrangle(s): *Alberhill and Lake Elsinore, California (7.5 minute)*

Study Area: 10 acres

Key Words: USGS *Alberhill* and *Lake Elsinore* quadrangles (7.5 minute); archaeological survey; negative survey; no mitigation measures recommended.

Table of Contents

<u>Section</u>	<u>Page</u>
I. INTRODUCTION	1
II. SETTING	1
<i>Natural Environment</i>	1
<i>Cultural Setting – Archaeological Perspectives</i>	5
III. SCOPE OF WORK.....	21
IV. RESULTS OF THE STUDY	21
<i>Background Research and Results of Records Searches</i>	21
<i>Field Reconnaissance</i>	23
V. RECOMMENDATIONS	25
VI. CERTIFICATION	26
VII. REFERENCES	26

Appendices

Appendix A – Resumes of Key Personnel

Appendix B – Archaeological Records Search Results*

Appendix C – NAHC Sacred Lands File Search*

**Deleted for public review; bound separately*

List of Figures

<u>Figure</u>	<u>Page</u>
Figure 1 General Location Map	2
Figure 2 Project Location Map (USGS).....	3
Figure 3 Project Development Map	4

List of Plates

<u>Plate</u>		<u>Page</u>
Plate 1	Overview of the project, facing north	24
Plate 2	Overview of the project, facing west	24
Plate 3	Overview of the recently excavated retention basin in the southeast quarter of the project, facing south	25

List of Tables

<u>Table</u>		<u>Page</u>
Table 1	Previously Recorded Archaeological Sites Within a One-Mile Radius of the Project	22

I. INTRODUCTION

In response to a requirement by the City of Lake Elsinore for the environmental assessment of a proposed condominium development, Brian F. Smith and Associates, Inc. (BFSA) conducted an archaeological survey of the 10-acre Lakeshore Drive Project. This project is within Assessor's Parcel Numbers [APNs] 379-230-001 and -002 and is located southeast of the intersection of Machado Street and Lakeshore Drive in the city of Lake Elsinore, Riverside County (Figure 1). The property is situated within the La Laguna (Stearns) Land Grant at Township 5 South, Range 3 West (projected) on the USGS *Alberhill* and *Lake Elsinore 7.5'* topographic quadrangles (Figure 2). The project consists of the construction of a residential development with a park, recreation center, and associated parking and landscaping (Figure 3).

The archaeological survey, which was conducted on March 1, 2022, was undertaken in order to determine if cultural resources exist within the property. The survey did not identify any cultural resources within the project. As part of this study, a copy of the report will be submitted to Eastern Information Center (EIC) at the University of California at Riverside (UCR). All investigations conducted by BFSA related to this project conformed to California Environmental Quality Act (CEQA) and City of Lake Elsinore environmental guidelines.

II. SETTING

Natural Environment

Riverside County lies in the Peninsular Ranges Geologic Province of southern California. The range, which lies in a northwest to southeast trend through the county, extends some 1,000 miles from the Raymond-Malibu Fault Zone in western Los Angeles County to the southern tip of Baja California. The subject property is generally flat and appears to have been entirely graded in the past. Elevations within the property range from approximately 1,306 to 1,316 feet above mean sea level (AMSL). The majority of the project is covered in dense native and non-native grasses, weeds, mustard plants, and Russian thistle. Eucalyptus trees are present along the northwest property boundary.

Geologically, the project is located within the Elsinore Fault Zone. According to Morton and Miller (2006), the project is underlain by Holocene and late Pleistocene young alluvial-valley deposits, "composed of unconsolidated sand, silt, and clay-bearing alluvium" and may interfinger with Holocene Lake Elsinore lacustrine sediments (Wirhs 2022). Northeast of Lakeshore Drive are mapped deposits of the Paleocene Silverado Formation and the middle Pleistocene fanglomerate member of the Pauba Formation; these deposits are not mapped within the project, but "may underlie the young alluvial-valley deposits at the project's surface at an unknown depth" (Wirhs 2022). Soils within the project consist of Hanford coarse sandy loam, 2 to 8 percent slopes (NRCS 2022).

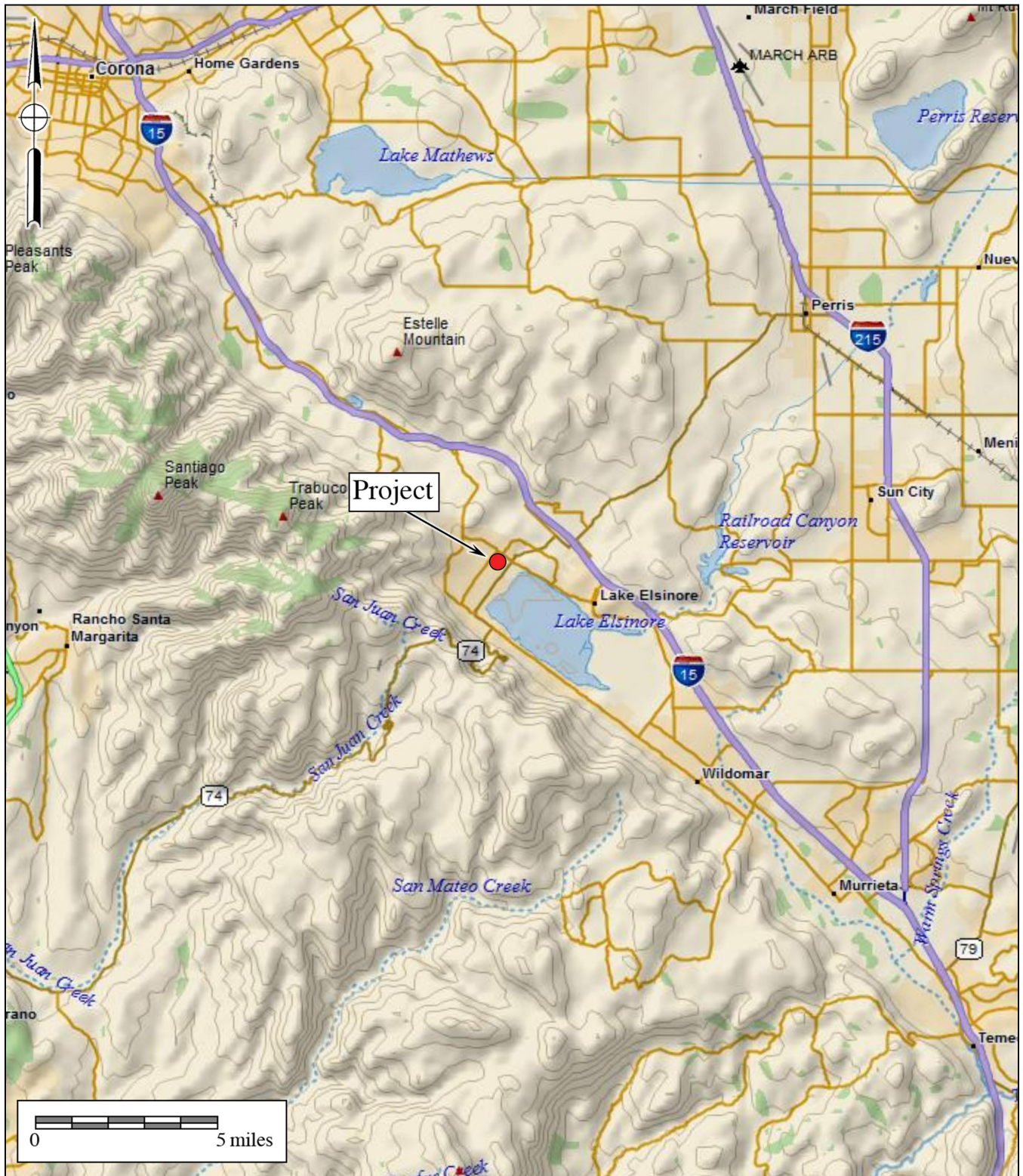


Figure 1
General Location Map
 The Lakeshore Drive Project
 DeLorme (1:250,000)



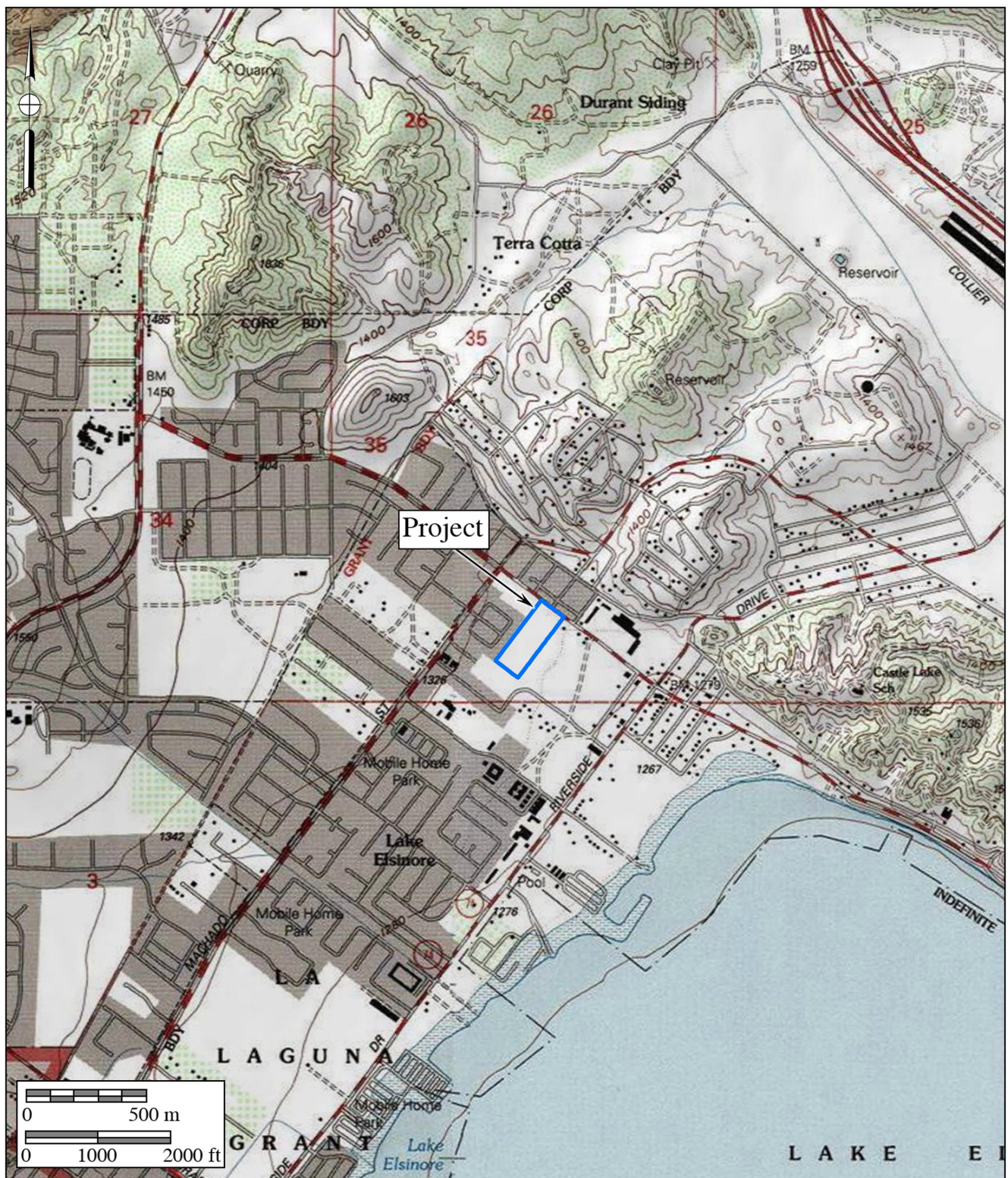


Figure 2

Project Location Map


The Lakeshore Drive Project

USGS Lake Elsinore and Alberhill Quadrangles (7.5-minute series)





Legend

 Project Boundary

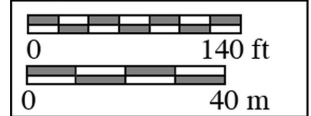


Figure 3
Project Development Map
The Lakeshore Drive Project

During the prehistoric period, vegetation in the area of the project provided sufficient food resources to support prehistoric human occupants. Animals that inhabited the project area during prehistoric times included mammals such as rabbits, squirrels, gophers, mice, rats, deer, and coyotes, in addition to a variety of reptiles and amphibians. The natural setting of the project area during the prehistoric occupation offered a rich nutritional resource base. Fresh water was likely obtainable on a year-round basis from the San Jacinto River, which has historically discharged flood water into Lake Elsinore. Lake Elsinore, located 0.8 mile to the southeast of the project, was recorded on the 1857 Britton and Rey's Map as "Laguna Sal," or "salt lake or lagoon," making its waters poisonous. The lake currently contains fresh water after numerous cycles of drought and flooding beginning in the early 1800s (Gunther 1984).

Cultural Setting – Archaeological Perspectives

The archaeological perspective seeks to reconstruct past cultures based upon the material remains left behind. This is done by using a range of scientific methodologies, almost all of which draw from evolutionary theory as the base framework. Archaeology allows one to look deeper into history or prehistory to see where the beginnings of ideas manifest via analysis of material culture, allowing for the understanding of outside forces that shape social change. Thus, the archaeological perspective allows one to better understand the consequences of the history of a given culture upon modern cultures. Archaeologists seek to understand the effects of past contexts of a given culture upon *this* moment in time, not culture in context *in* the moment.

Despite this, a distinction exists between "emic" and "etic" ways of understanding material culture, prehistoric lifeways, and cultural phenomena in general (Harris 1991). While "emic" perspectives serve the subjective ways in which things are perceived and interpreted by the participants within a culture, "etic" perspectives are those of an outsider looking in hoping to attain a more scientific or "objective" understanding of the given phenomena. Archaeologists, by definition, will almost always serve an etic perspective as a result of the very nature of their work. As indicated by Laylander et al. (2014), it has sometimes been suggested that etic understanding, and therefore an archaeological understanding, is an imperfect and potentially ethnocentric attempt to arrive at emic understanding. In contrast to this, however, an etic understanding of material culture, cultural phenomena, and prehistoric lifeways can address significant dimensions of culture that lie entirely beyond the understanding or interest of those solely utilizing an emic perspective. As Harris (1991:20) appropriately points out, "Etic studies often involve the measurement and juxtaposition of activities and events that native informants find inappropriate or meaningless." This is also likely true of archaeological comparisons and juxtapositions of material culture. However, culture as a whole does not occur in a vacuum and is the result of several millennia of choices and consequences influencing everything from technology, to religions, to institutions. Archaeology allows for the ability to not only see what came before, but to see how those choices, changes, and consequences affect the present. Where possible, archaeology should seek to address both emic and etic understandings to the extent that they may be recoverable from the

archaeological record as manifestations of patterned human behavior (Laylander et al. 2014).

To that point, the culture history offered herein is primarily based upon archaeological (etic) and ethnographic (partially emic and partially etic) information. It is understood that the ethnographic record and early archaeological records were incompletely and imperfectly collected. In addition, in most cases, more than a century of intensive cultural change and cultural evolution had elapsed since the terminus of the prehistoric period. Coupled with the centuries and millennia of prehistoric change separating the “ethnographic present” from the prehistoric past, this has affected the emic and etic understandings of prehistoric cultural settings. Regardless, there remains a need to present the changing cultural setting within the region under investigation. As a result, both archaeological and Native American perspectives are offered when possible.

Introduction

Paleo Indian, Archaic Period Milling Stone Horizon, and the Late Prehistoric Takic groups are the three general cultural periods represented in Riverside County. The following discussion of the cultural history of Riverside County references the San Dieguito Complex, Encinitas Tradition, Milling Stone Horizon, La Jolla Complex, Pauma Complex, and San Luis Rey Complex, since these culture sequences have been used to describe archaeological manifestations in the region. The Late Prehistoric component present in the Riverside County area was primarily represented by the Cahuilla, Gabrielino, and Luiseño Indians.

Absolute chronological information, where possible, will be incorporated into this archaeological discussion to examine the effectiveness of continuing to interchangeably use these terms. Reference will be made to the geological framework that divides the archaeologically-based culture chronology of the area into four segments: the late Pleistocene (20,000 to 10,000 years before the present [YBP]), the early Holocene (10,000 to 6,650 YBP), the middle Holocene (6,650 to 3,350 YBP), and the late Holocene (3,350 to 200 YBP).

Paleo Indian Period (Late Pleistocene: 11,500 to circa 9,000 YBP)

Archaeologically, the Paleo Indian Period is associated with the terminus of the late Pleistocene (12,000 to 10,000 YBP). The environment during the late Pleistocene was cool and moist, which allowed for glaciation in the mountains and the formation of deep, pluvial lakes in the deserts and basin lands (Moratto 1984). However, by the terminus of the late Pleistocene, the climate became warmer, which caused the glaciers to melt, sea levels to rise, greater coastal erosion, large lakes to recede and evaporate, extinction of Pleistocene megafauna, and major vegetation changes (Moratto 1984; Martin 1967, 1973; Fagan 1991). The coastal shoreline at 10,000 YBP, depending upon the particular area of the coast, was near the 30-meter isobath, or two to six kilometers further west than its present location (Masters 1983).

Paleo Indians were likely attracted to multiple habitat types, including mountains, marshlands, estuaries, and lakeshores. These people likely subsisted using a more generalized hunting, gathering, and collecting adaptation utilizing a variety of resources including birds,

mollusks, and both large and small mammals (Erlandson and Colten 1991; Moratto 1984; Moss and Erlandson 1995).

Archaic Period (Early and Middle Holocene: circa 9,000 to 1,300 YBP)

Archaeological data indicates that between 9,000 and 8,000 YBP, a widespread complex was established in the southern California region, primarily along the coast (Warren and True 1961). This complex is locally known as the La Jolla Complex (Rogers 1939; Moriarty 1966), which is regionally associated with the Encinitas Tradition (Warren 1968) and shares cultural components with the widespread Milling Stone Horizon (Wallace 1955). The coastal expression of this complex appeared in southern California coastal areas and focused upon coastal resources and the development of deeply stratified shell middens that were primarily located around bays and lagoons. The older sites associated with this expression are located at Topanga Canyon, Newport Bay, Agua Hedionda Lagoon, and some of the Channel Islands. Radiocarbon dates from sites attributed to this complex span a period of over 7,000 years in this region, beginning over 9,000 YBP.

The Encinitas Tradition is best recognized for its pattern of large coastal sites characterized by shell middens, grinding tools that are closely associated with the marine resources of the area, cobble-based tools, and flexed human burials (Shumway et al. 1961; Smith and Moriarty 1985). While ground stone tools and scrapers are the most recognized tool types, coastal Encinitas Tradition sites also contain numerous utilized flakes, which may have been used to pry open shellfish. Artifact assemblages at coastal sites indicate a subsistence pattern focused upon shellfish collection and nearshore fishing. This suggests an incipient maritime adaptation with regional similarities to more northern sites of the same period (Koerper et al. 1986). Other artifacts associated with Encinitas Tradition sites include stone bowls, doughnut stones, discoidals, stone balls, and stone, bone, and shell beads.

The coastal lagoons in southern California supported large Milling Stone Horizon populations circa 6,000 YBP, as is shown by numerous radiocarbon dates from the many sites adjacent to the lagoons. The ensuing millennia were not stable environmentally, and by 3,000 YBP, many of the coastal sites in central San Diego County had been abandoned (Gallegos 1987, 1992). The abandonment of the area is usually attributed to the sedimentation of coastal lagoons and the resulting deterioration of fish and mollusk habitat. This is a well-documented situation at Batiquitos Lagoon, where over a two-thousand-year period, dominant mollusk species occurring in archaeological middens shift from deep-water mollusks (*Argopecten* sp.) to species tolerant of tidal flat conditions (*Chione* sp.), indicating water depth and temperature changes (Miller 1966; Gallegos 1987).

This situation likely occurred for other small drainages (Buena Vista, Agua Hedionda, San Marcos, and Escondido creeks) along the central San Diego coast where low flow rates did not produce sufficient discharge to flush the lagoons they fed (Buena Vista, Agua Hedionda, Batiquitos, and San Elijo lagoons) (Byrd 1998). Drainages along the northern and southern San

Diego coastline were larger and flushed the coastal hydrological features they fed, keeping them open to the ocean and allowing for continued human exploitation (Byrd 1998). Peñasquitos Lagoon exhibits dates as late as 2,355 YBP (Smith and Moriarty 1985) and San Diego Bay showed continuous occupation until the close of the Milling Stone Horizon (Gallegos and Kyle 1988). Additionally, data from several drainages in Camp Pendleton indicate a continued occupation of shell midden sites until the close of the period, indicating that coastal sites were not entirely abandoned during this time (Byrd 1998).

By 5,000 YBP, an inland expression of the La Jolla Complex is evident in the archaeological record, exhibiting influences from the Campbell Tradition from the north. These inland Milling Stone Horizon sites have been termed “Pauma Complex” (True 1958; Warren et al. 1961; Meighan 1954). By definition, Pauma Complex sites share a predominance of grinding implements (manos and metates), lack mollusk remains, have greater tool variety (including atlatl dart points, quarry-based tools, and crescentics), and seem to express a more sedentary lifestyle with a subsistence economy based upon the use of a broad variety of terrestrial resources. Although originally viewed as a separate culture from the coastal La Jolla Complex (True 1980), it appears that these inland sites may be part of a subsistence and settlement system utilized by the coastal peoples. Evidence from the 4S Project in inland San Diego County suggests that these inland sites may represent seasonal components within an annual subsistence round by La Jolla Complex populations (Raven-Jennings et al. 1996). Including both coastal and inland sites of this time period in discussions of the Encinitas Tradition, therefore, provides a more complete appraisal of the settlement and subsistence system exhibited by this cultural complex.

More recent work by Sutton has identified a more localized complex known as the Greven Knoll Complex. The Greven Knoll Complex is a redefined northern inland expression of the Encinitas Tradition first put forth by Mark Sutton and Jill Gardener (2010). Sutton and Gardener (2010:25) state that “[t]he early millingstone archaeological record in the northern portion of the interior southern California was not formally named but was often referred to as ‘Inland Millingstone,’ ‘Encinitas,’ or even ‘Topanga.’” Therefore, they proposed that all expressions of the inland Milling Stone in southern California north of San Diego County be grouped together in the Greven Knoll Complex.

The Greven Knoll Complex, as postulated by Sutton and Gardener (2010), is broken into three phases and obtained its name from the type-site Greven Knoll located in Yucaipa, California. Presently, the Greven Knoll Site is part of the Yukaipa’t Site (SBR-1000) and was combined with the adjacent Simpson Site. Excavations at Greven Knoll recovered manos, metates, projectile points, discoidal clogged stones, and a flexed inhumation with a possible cremation (Kowta 1969:39). It is believed that the Greven Knoll Site was occupied between 5,000 and 3,500 YBP. The Simpson Site contained mortars, pestles, side-notched points, and stone and shell beads. Based upon the data recovered at these sites, Kowta (1969:39) suggested that “coastal Milling Stone Complexes extended to and interdigitated with the desert Pinto Basin Complex in the vicinity of the Cajon Pass.”

Phase I of the Greven Knoll Complex is generally dominated by the presence of manos and metates, core tools, hammerstones, large dart points, flexed inhumations, and occasional cremations. Mortars and pestles are absent from this early phase, and the subsistence economy emphasized hunting. Sutton and Gardener (2010:26) propose that the similarity of the material culture of Greven Knoll Phase I and that found in the Mojave Desert at Pinto Period sites indicates that the Greven Knoll Complex was influenced by neighbors to the north at that time. Accordingly, Sutton and Gardener (2010) believe that Greven Knoll Phase I may have appeared as early as 9,400 YBP and lasted until about 4,000 YBP.

Greven Knoll Phase II is associated with a period between 4,000 and 3,000 YBP. Artifacts common to Greven Knoll Phase II include manos and metates, Elko points, core tools, and discoidals. Pestles and mortars are present; however, they are only represented in small numbers. Finally, there is an emphasis upon hunting and gathering for subsistence (Sutton and Gardener 2010:8).

Greven Knoll Phase III includes manos, metates, Elko points, scraper planes, choppers, hammerstones, and discoidals. Again, small numbers of mortars and pestles are present. Greven Knoll Phase III spans from approximately 3,000 to 1,000 YBP and shows a reliance upon seeds and yucca. Hunting is still important, but bones seem to have been processed to obtain bone grease more often in this later phase (Sutton and Gardener 2010:8).

The shifts in food processing technologies during each of these phases indicate a change in subsistence strategies; although people were still hunting for large game, plant-based foods eventually became the primary dietary resource (Sutton 2011a). Sutton's (2011b) argument posits that the development of mortars and pestles during the middle Holocene can be attributed to the year-round exploitation of acorns as a main dietary provision. Additionally, the warmer and drier climate may have been responsible for groups from the east moving toward coastal populations, which is archaeologically represented by the interchange of coastal and eastern cultural traits (Sutton 2011a).

Late Prehistoric Period (Late Holocene: 1,300 YBP to 1790)

Many Luiseño hold the world view that as a population they were created in southern California. Archaeological and anthropological data, however, proposes a scientific/archaeological perspective, suggesting that at approximately 1,350 YBP, Takic-speaking groups from the Great Basin region moved into Riverside County, marking the transition to the Late Prehistoric Period. An analysis of the Takic expansion by Sutton (2009) indicates that inland southern California was occupied by "proto-Yuman" populations before 1,000 YBP. The comprehensive, multi-phase model offered by Sutton (2009) employs linguistic, ethnographic, archaeological, and biological data to solidify a reasonable argument for population replacement of Takic groups to the north by Penutians (Laylander 1985). As a result, it is believed that Takic expansion occurred starting around 3,500 YBP moving toward southern California, with the Gabrielino language diffusing south into neighboring Yuman (Hokan) groups around 1,500 to

1,000 YBP, possibly resulting in the Luiseño dialect.

Based upon Sutton's model, the final Takic expansion would not have occurred until about 1,000 YBP, resulting in Vanyume, Serrano, Cahuilla, and Cupeño dialects. The model suggests that the Luiseño did not simply replace Hokan speakers, but were rather a northern San Diego County/southern Riverside County Yuman population who adopted the Takic language. This period is characterized by higher population densities and elaborations in social, political, and technological systems. Economic systems diversified and intensified during this period with the continued elaboration of trade networks, the use of shell-bead currency, and the appearance of more labor-intensive, yet effective, technological innovations. Technological developments during this period included the introduction of the bow and arrow between A.D. 400 and 600 and the introduction of ceramics. Atlatl darts were replaced by smaller arrow darts, including Cottonwood series points. Other hallmarks of the Late Prehistoric Period include extensive trade networks as far-reaching as the Colorado River Basin and cremation of the dead.

Protohistoric Period (Late Holocene: 1790 to Present)

Ethnohistoric and ethnographic evidence indicates that three Takic-speaking groups occupied portions of Riverside County: the Cahuilla, the Gabrielino, and the Luiseño. The geographic boundaries between these groups in pre- and proto-historic times are difficult to place, but the project is located well within the borders of ethnographic Luiseño territory. This group was a seasonal hunting and gathering people with cultural elements that were very distinct from Archaic Period peoples. These distinctions include cremation of the dead, the use of the bow and arrow, and exploitation of the acorn as a main food staple (Moratto 1984). Along the coast, the Luiseño made use of available marine resources by fishing and collecting mollusks for food. Seasonally available terrestrial resources, including acorns and game, were also sources of nourishment for Luiseño groups. Elaborate kinship and clan systems between the Luiseño and other groups facilitated a wide-reaching trade network that included trade of Obsidian Butte obsidian and other resources from the eastern deserts, as well as steatite from the Channel Islands.

According to Charles Handley (1967), the primary settlements of Late Prehistoric Luiseño Indians in the San Jacinto Plain were represented by Ivah and Soboba near Soboba Springs, Jusipah near the town of San Jacinto, Ararah in Webster's Canyon en route to Idyllwild, Pahsitha near Big Springs Ranch southeast of Hemet, and Corova in Castillo Canyon. These locations share features such as the availability of food and water resources. Features of this land use include petroglyphs and pictographs, as well as widespread milling, which is evident in bedrock and portable implements. Groups in the vicinity of the project, neighboring the Luiseño, include the Cahuilla and the Gabrielino. Ethnographic data for the three groups is presented below.

Luiseño: An Archaeological and Ethnographic Perspective

When contacted by the Spanish in the sixteenth century, the Luiseño occupied a territory bounded on the west by the Pacific Ocean, on the east by the Peninsular Ranges mountains at San

Jacinto (including Palomar Mountain to the south and Santiago Peak to the north), on the south by Agua Hedionda Lagoon, and on the north by Aliso Creek in present-day San Juan Capistrano. The Luiseño were a Takic-speaking people more closely related linguistically and ethnographically to the Cahuilla, Gabrielino, and Cupeño to the north and east rather than the Kumeyaay who occupied territory to the south. The Luiseño differed from their neighboring Takic speakers in having an extensive proliferation of social statuses, a system of ruling families that provided ethnic cohesion within the territory, a distinct worldview that stemmed from the use of datura (a hallucinogen), and an elaborate religion that included the creation of sacred sand paintings depicting the deity Chingichngish (Bean and Shipek 1978; Kroeber 1976).

Subsistence and Settlement

The Luiseño occupied sedentary villages most often located in sheltered areas in valley bottoms, along streams, or along coastal strands near mountain ranges. Villages were located near water sources to facilitate acorn leaching and in areas that offered thermal and defensive protection. Villages were comprised of areas that were publicly and privately (by family) owned. Publicly owned areas included trails, temporary campsites, hunting areas, and quarry sites. Inland groups had fishing and gathering sites along the coast that were intensively used from January to March when inland food resources were scarce. During October and November, most of the village would relocate to mountain oak groves to harvest acorns. The Luiseño remained at village sites for the remainder of the year, where food resources were within a day's travel (Bean and Shipek 1978; Kroeber 1976).

The most important food source for the Luiseño was the acorn, six different species of which were used (*Quercus californica*, *Quercus agrifolia*, *Quercus chrysolepis*, *Quercus dumosa*, *Quercus engelmannii*, and *Quercus wislizenii*). Seeds, particularly of grasses, flowering plants, and mints, were also heavily exploited. Seed-bearing species were encouraged through controlled burns, which were conducted at least every third year. A variety of other stems, leaves, shoots, bulbs, roots, and fruits were also collected. Hunting augmented this vegetal diet. Animal species taken included deer, rabbit, hare, woodrat, ground squirrel, antelope, quail, duck, freshwater fish from mountain streams, marine mammals, and other sea creatures such as fish, crustaceans, and mollusks (particularly abalone, or *Haliotis* sp.). In addition, a variety of snakes, small birds, and rodents were eaten (Bean and Shipek 1978; Kroeber 1976).

Social Organization

Social groups within the Luiseño nation consisted of patrilinear families or clans, which were politically and economically autonomous. Several clans comprised a religious party, or nota, which was headed by a chief who organized ceremonies and controlled economics and warfare. The chief had assistants who specialized in particular aspects of ceremonial or environmental knowledge and who, with the chief, were part of a religion-based social group with special access to supernatural power, particularly that of Chingichngish. The positions of chief and assistants

were hereditary, and the complexity and multiplicity of these specialists' roles likely increased in coastal and larger inland villages (Bean and Shipek 1978; Kroeber 1976; Strong 1929).

Marriages were arranged by the parents, often made to forge alliances between lineages. Useful alliances included those between groups of differing ecological niches and those that resulted in territorial expansion. Residence was patrilocal (Bean and Shipek 1978; Kroeber 1976). Women were primarily responsible for plant gathering and men principally hunted, but at times, particularly during acorn and marine mollusk harvests, there was no division of labor. Elderly women cared for children and elderly men participated in rituals, ceremonies, and political affairs. They were also responsible for manufacturing hunting and ritual implements. Children were taught subsistence skills at the earliest age possible (Bean and Shipek 1978; Kroeber 1976).

Material Culture

House structures were conical, partially subterranean, and thatched with reeds, brush, or bark. Ramadas were rectangular, protected workplaces for domestic chores such as cooking. Ceremonial sweathouses were important in purification rituals; these were round and partially subterranean thatched structures covered with a layer of mud. Another ceremonial structure was the wámkis (located in the center of the village, serving as the place of rituals), where sand paintings and other rituals associated with the Chingichngish religious group were performed (Bean and Shipek 1978; Kroeber 1976).

Clothing was minimal; women wore a cedar-bark and netted twine double apron, and men wore a waist cord. In cold weather, cloaks or robes of rabbit fur, deerskin, or sea otter fur were worn by both sexes. Footwear included deerskin moccasins and sandals fashioned from yucca fibers. Adornments included bead necklaces and pendants made of bone, clay, stone, shell, bear claw, mica, deer hooves, and abalone shell. Men wore ear and nose piercings made from cane or bone, which were sometimes decorated with beads. Other adornments were commonly decorated with semiprecious stones including quartz, topaz, garnet, opal, opalite, agate, and jasper (Bean and Shipek 1978; Kroeber 1976).

Hunting implements included the bow and arrow. Arrows were tipped with either a carved, fire-hardened wood tip or a lithic point, usually fashioned from locally available metavolcanic material or quartz. Throwing sticks fashioned from wood were used in hunting small game, while deer head decoys were used during deer hunts. Coastal groups fashioned dugout canoes for nearshore fishing and harvested fish with seines, nets, traps, and hooks made of bone or abalone shell (Bean and Shipek 1978; Kroeber 1976).

The Luiseño had a well-developed basket industry. Baskets were used in resource gathering, food preparation, storage, and food serving. Ceramic containers were shaped by paddle and anvil and fired in shallow, open pits to be used for food storage, cooking, and serving. Other utensils included wood implements, steatite bowls, and ground stone manos, metates, mortars, and pestles (Bean and Shipek 1978; Kroeber 1976). Additional tools such as knives, scrapers, choppers, awls, and drills were also used. Shamanistic items include soapstone or clay smoking

pipes and crystals made of quartz or tourmaline (Bean and Shipek 1978; Kroeber 1976).

Cahuilla: An Archaeological and Ethnographic Perspective

At the time of Spanish contact in the sixteenth century, the Cahuilla occupied territory that included the San Bernardino Mountains, Orocopia Mountain, and the Chocolate Mountains to the west, Salton Sea and Borrego Springs to the south, Palomar Mountain and Lake Mathews to the west, and the Santa Ana River to the north. The Cahuilla are a Takic-speaking people closely related to their Gabrielino and Luiseño neighbors, although relations with the Gabrielino were more intense than with the Luiseño. They differ from the Luiseño and Gabrielino in that their religion is more similar to the Mohave tribes of the eastern deserts than the Chingichngish religious group of the Luiseño and Gabrielino. The following is a summary of ethnographic data regarding this group (Bean 1978; Kroeber 1976).

Subsistence and Settlement

Cahuilla villages were typically permanent and located upon low terraces within canyons in proximity to water sources. These locations proved to be rich in food resources and also afforded protection from prevailing winds. Villages had areas that were publicly owned and areas that were privately owned by clans, families, or individuals. Each village was associated with a particular lineage and series of sacred sites that included unique petroglyphs and pictographs. Villages were occupied throughout the year; however, during a several-week period in the fall, most of the village members relocated to mountain oak groves to take part in acorn harvesting (Bean 1978; Kroeber 1976).

The Cahuilla's use of plant resources is well documented. Plant foods harvested by the Cahuilla included valley oak acorns and single-leaf pinyon pine nuts. Other important plant species included bean and screw mesquite, agave, Mohave yucca, cacti, palm, chia, quail brush, yellowray goldfield, goosefoot, manzanita, catsclaw, desert lily, mariposa lily, and several other species such as grass seed. Several agricultural domesticates were acquired from the Colorado River tribes including corn, bean, squash, and melon grown in limited amounts. Animal species taken included deer, bighorn sheep, pronghorn antelope, rabbit, hare, rat, quail, dove, duck, roadrunner, and a variety of rodents, reptiles, fish, and insects (Bean 1978; Kroeber 1976).

Social Organization

The Cahuilla was not a political nation, but rather a cultural nationality with a common language. Two non-political, non-territorial patrimoieties were recognized: the Wildcats (túktem) and the Coyotes (?ísta). Lineage and kinship were memorized at a young age among the Cahuilla, providing a backdrop for political relationships. Clans were comprised of three to 10 lineages; each lineage owned a village site and specific resource areas. Lineages within a clan cooperated in subsistence activities, defense, and rituals (Bean 1978; Kroeber 1976).

A system of ceremonial hierarchy operated within each lineage. The hierarchy included

the lineage leader, who was responsible for leading subsistence activities, guarding the sacred bundle, and negotiating with other lineage leaders in matters concerning land use, boundary disputes, marriage arrangements, trade, warfare, and ceremonies. The ceremonial assistant to the lineage leader was responsible for organizing ceremonies. A ceremonial singer possessed and performed songs at rituals and trained assistant singers. The shaman cured illnesses through supernatural powers, controlled natural phenomena, and was the guardian of ceremonies, keeping evil spirits away. The diviner was responsible for finding lost objects, telling future events, and locating game and other food resources. Doctors were usually older women who cured various ailments and illnesses with their knowledge of medicinal herbs. Finally, certain Cahuilla specialized as traders, who ranged as far west as Santa Catalina and as far east as the Gila River (Bean 1978; Kroeber 1976).

Marriages were arranged by parents from opposite moieties. When a child was born, an alliance formed between the families, which included frequent reciprocal exchanges. The Cahuilla kinship system extended to relatives within five generations. Important economic decisions, primarily the distribution of goods, operated within this kinship system (Bean 1978; Kroeber 1976).

Material Culture

Cahuilla houses were dome-shaped or rectangular, thatched structures. The home of the lineage leader was the largest, located near the ceremonial house with the best access to water. Other structures within the village included the men's sweathouse and granaries (Bean 1978; Kroeber 1976).

Cahuilla clothing, like other groups in the area, was minimal. Men typically wore a loincloth and sandals; women wore skirts made from mesquite bark, animal skin, or tules. Babies wore mesquite bark diapers. Rabbit skin cloaks were worn in cold weather (Bean 1978; Kroeber 1976).

Hunting implements included the bow and arrow, throwing sticks, and clubs. Grinding tools used in food processing included manos, metates, and wood mortars. The Cahuilla were known to use long grinding implements made from wood to process mesquite beans; the mortar was typically a hollowed log buried in the ground. Other tools included steatite arrow shaft straighteners (Bean 1978; Kroeber 1976).

Baskets were made from rush, deer grass, and skunkbrush. Different species and leaves were chosen for different colors in the basket design. Coiled-ware baskets were either flat (for plates, trays, or winnowing), bowl-shaped (for food serving), deep, inverted, and cone-shaped (for transporting), or rounded and flat-bottomed for storing utensils and personal items (Bean 1978; Kroeber 1976).

Cahuilla pottery was made from a thin, red-colored ceramic ware that was often painted and incised. Four basic vessel types are known for the Cahuilla: small-mouthed jars, cooking pots, bowls, and dishes. Additionally, smoking pipes and flutes were fashioned from ceramic (Bean

1978; Kroeber 1976).

Gabrielino: An Archaeological and Ethnographic Perspective

The territory of the Gabrielino at the time of Spanish contact covers much of present-day Los Angeles and Orange counties. The southern extent of this culture area is bounded by Aliso Creek, the eastern extent is located east of present-day San Bernardino along the Santa Ana River, the northern extent includes the San Fernando Valley, and the western extent includes portions of the Santa Monica Mountains. The Gabrielino also occupied several Channel Islands including Santa Barbara Island, Santa Catalina Island, San Nicholas Island, and San Clemente Island. Because of their access to certain resources, including a steatite source from Santa Catalina Island, this group was among the wealthiest and most populous aboriginal groups in all of southern California. Trade of materials and resources controlled by the Gabrielino extended as far north as the San Joaquin Valley, as far east as the Colorado River, and as far south as Baja California (Bean and Smith 1978; Kroeber 1976).

Subsistence and Settlement

The Gabrielino lived in permanent villages and occupied smaller resource-gathering camps at various times of the year depending upon the seasonality of the resource. Larger villages were comprised of several families or clans, while smaller, seasonal camps typically housed smaller family units. The coastal area between San Pedro and Topanga Canyon was the location of primary subsistence villages, while secondary sites were located near inland sage stands, oak groves, and pine forests. Permanent villages were located along rivers and streams and in sheltered areas along the coast. As previously mentioned, the Channel Islands were also the locations of relatively large settlements (Bean and Smith 1978; Kroeber 1976).

Resources procured along the coast and on the islands were primarily marine in nature and included tuna, swordfish, ray and shark, California sea lion, Stellar sea lion, harbor seal, northern elephant seal, sea otter, dolphin and porpoise, various waterfowl species, numerous fish species, purple sea urchin, and mollusks, such as rock scallop, California mussel, and limpet. Inland resources included oak acorn, pine nut, Mohave yucca, cacti, sage, grass nut, deer, rabbit, hare, rodent, quail, duck, and a variety of reptiles such as western pond turtle and numerous snake species (Bean and Smith 1978; Kroeber 1976).

Social Organization

Little is known about the social structure of the Gabrielino; however, there appears to have been at least three social classes: 1) the elite, which included the rich, chiefs, and their immediate family; 2) a middle class, which included people of relatively high economic status or long-established lineages; and 3) a class of people that included most other individuals in the society. Villages were politically autonomous units comprised of several lineages. During times of the year when certain seasonal resources were available, the village would divide into lineage groups

and move out to exploit them, returning to the village between forays (Bean and Smith 1978; Kroeber 1976).

Each lineage had its own leader, with the village chief coming from the dominant lineage. Several villages might be allied under a paramount chief. Chiefly positions were of an ascribed status, most often passed to the eldest son. Chiefly duties included providing village cohesion, leading warfare and peace negotiations with other groups, collecting tribute from the village(s) under his jurisdiction, and arbitrating disputes within the village(s). The status of the chief was legitimized by his safekeeping of the sacred bundle, a representation of the link between the material and spiritual realms and the embodiment of power (Bean and Smith 1978; Kroeber 1976).

Shamans were leaders in the spirit realm. The duties of the shaman included conducting healing and curing ceremonies, guarding the sacred bundle, locating lost items, identifying and collecting poisons for arrows, and making rain (Bean and Smith 1978; Kroeber 1976).

Marriages were made between individuals of equal social status and, in the case of powerful lineages, marriages were arranged to establish political ties between the lineages (Bean and Smith 1978; Kroeber 1976).

Men conducted the majority of the heavy labor, hunting, fishing, and trading with other groups. Women's duties included gathering and preparing plant and animal resources, and making baskets, pots, and clothing (Bean and Smith 1978; Kroeber 1976).

Material Culture

Gabrielino houses were domed, circular structures made of thatched vegetation. Houses varied in size and could house from one to several families. Sweathouses (semicircular, earth-covered buildings) were public structures used in male social ceremonies. Other structures included menstrual huts and a ceremonial structure called a yuvar, an open-air structure built near the chief's house (Bean and Smith 1978; Kroeber 1976).

Clothing was minimal; men and children most often went naked, while women wore deerskin or bark aprons. In cold weather, deerskin, rabbit fur, or bird skin (with feathers intact) cloaks were worn. Island and coastal groups used sea otter fur for cloaks. In areas of rough terrain, yucca fiber sandals were worn. Women often used red ochre upon their faces and skin for adornment or protection from the sun. Adornment items included feathers, fur, shells, and beads (Bean and Smith 1978; Kroeber 1976).

Hunting implements included wood clubs, sinew-backed bows, slings, and throwing clubs. Maritime implements included rafts, harpoons, spears, hook and line, and nets. A variety of other tools included deer scapulae saws, bone and shell needles, bone awls, scrapers, bone or shell flakers, wedges, stone knives and drills, metates, mullers, manos, shell spoons, bark platters, and wood paddles and bowls. Baskets were made from rush, deer grass, and skunkbush. Baskets were fashioned for hoppers, plates, trays, and winnowers for leaching, straining, and gathering. Baskets were also used for storing, preparing, and serving food, and for keeping personal and ceremonial items (Bean and Smith 1978; Kroeber 1976).

The Gabrielino had exclusive access to soapstone, or steatite, procured from Santa Catalina Island quarries. This highly prized material was used for making pipes, animal carvings, ritual objects, ornaments, and cooking utensils. The Gabrielino profited well from trading steatite since it was valued so much by groups throughout southern California (Bean and Smith 1978; Kroeber 1976).

Ethnohistoric Period (1769 to Present)

Traditionally, the history of the state of California has been divided into three general periods: the Spanish Period (1769 to 1821), the Mexican Period (1822 to 1846), and the American Period (1848 to present) (Caughey 1970). The American Period is often further subdivided into additional phases: the nineteenth century (1848 to 1900), the early twentieth century (1900 to 1950), and the Modern Period (1950 to present). From an archaeological standpoint, all of these phases can be referred to together as the Ethnohistoric Period. This provides a valuable tool for archaeologists, as ethnohistory is directly concerned with the study of indigenous or non-Western peoples from a combined historical/anthropological viewpoint, which employs written documents, oral narrative, material culture, and ethnographic data for analysis.

European exploration along the California coast began in 1542 with the landing of Juan Rodriguez Cabrillo and his men at San Diego Bay. Sixty years after the Cabrillo expeditions, an expedition under Sebastian Viscaíno made an extensive and thorough exploration of the Pacific coast. Although the voyage did not extend beyond the northern limits of the Cabrillo track, Viscaíno had the most lasting effect upon the nomenclature of the coast. Many of his place names have survived, whereas practically every one of the names created by Cabrillo have faded from use. For instance, Cabrillo named the first (now) United States port he stopped at “San Miguel”; 60 years later, Viscaíno changed it to “San Diego” (Rolle 1969). The early European voyages observed Native Americans living in villages along the coast but did not make any substantial, long-lasting impact. At the time of contact, the Luiseño population was estimated to have ranged from 4,000 to as many as 10,000 individuals (Bean and Shipek 1978; Kroeber 1976).

The historic background of the project area began with the Spanish colonization of Alta California. The first Spanish colonizing expedition reached southern California in 1769 with the intention of converting and civilizing the indigenous populations, as well as expanding the knowledge of and access to new resources in the region (Brigandi 1998). As a result, by the late eighteenth century, a large portion of southern California was overseen by Mission San Luis Rey (San Diego County), Mission San Juan Capistrano (Orange County), and Mission San Gabriel (Los Angeles County), who began colonizing the region and surrounding areas (Chapman 1921).

Up until this time, the only known way to feasibly travel from Sonora to Alta California was by sea. In 1774, Juan Bautista de Anza, an army captain at Tubac, requested and was given permission by the governor of the Mexican State of Sonora to establish an overland route from Sonora to Monterey (Chapman 1921). In doing so, Juan Bautista de Anza passed through Riverside County and described the area in writing for the first time (Caughey 1970; Chapman

1921). In 1797, Father Presidente Lausen (of Mission San Diego de Alcalá), Father Norberto de Santiago, and Corporal Pedro Lisalde (of Mission San Juan Capistrano) led an expedition through southwestern Riverside County in search of a new mission site to establish a presence between San Diego and San Juan Capistrano (Engelhardt 1921). Their efforts ultimately resulted in the establishment of Mission San Luis Rey in Oceanside, California.

Each mission gained power through the support of a large, subjugated Native American workforce. As the missions grew, livestock holdings increased and became increasingly vulnerable to theft. In order to protect their interests, the southern California missions began to expand inland to try and provide additional security (Beattie and Beattie 1939; Caughey 1970). In order to meet their needs, the Spaniards embarked upon a formal expedition in 1806 to find potential locations within what is now the San Bernardino Valley. As a result, by 1810, Father Francisco Dumetz of Mission San Gabriel had succeeded in establishing a religious site, or capilla, at a Cahuilla rancheria called Guachama (Beattie and Beattie 1939). San Bernardino Valley received its name from this site, which was dedicated to San Bernardino de Siena by Father Dumetz. The Guachama rancheria was located in present-day Bryn Mawr in San Bernardino County.

These early colonization efforts were followed by the establishment of estancias at Puente (circa 1816) and San Bernardino (circa 1819) near Guachama (Beattie and Beattie 1939). These efforts were soon mirrored by the Spaniards from Mission San Luis Rey, who in turn established a presence in what is now Lake Elsinore, Temecula, and Murrieta (Chapman 1921). The indigenous groups who occupied these lands were recruited by missionaries, converted, and put to work in the missions (Pourade 1961). Throughout this period, the Native American populations were decimated by introduced diseases, a drastic shift in diet resulting in poor nutrition, and social conflicts due to the introduction of an entirely new social order (Cook 1976).

Mexico achieved independence from Spain in 1822 and became a federal republic in 1824. As a result, both Baja and Alta California became classified as territories (Rolle 1969). Shortly thereafter, the Mexican Republic sought to grant large tracts of private land to its citizens to begin to encourage immigration to California and to establish its presence in the region. Part of the establishment of power and control included the desecularization of the missions circa 1832. These same missions were also located on some of the most fertile land in California and, as a result, were considered highly valuable. The resulting land grants, known as “ranchos,” covered expansive portions of California and by 1846, more than 600 land grants had been issued by the Mexican government. Rancho Jurupa was the first rancho to be established and was issued to Juan Bandini in 1838. Although Bandini primarily resided in San Diego, Rancho Jurupa was located in what is now Riverside County (Pourade 1963). A review of Riverside County place names quickly illustrates that many of the ranchos in Riverside County lent their names to present-day locations, including Jurupa, El Rincon, La Sierra, El Sobrante de San Jacinto, La Laguna (Lake Elsinore), Santa Rosa, Temecula, Pauba, San Jacinto Nuevo y Potrero, and San Jacinto Viejo (Gunther 1984). As was typical of many ranchos, these were all located in the valley environments

within western Riverside County.

The treatment of Native Americans grew worse during the Rancho Period. Most of the Native Americans were forced off of their land or put to work on the now privately-owned ranchos, most often as slave labor. In light of the brutal ranchos, the degree to which Native Americans had become dependent upon the mission system is evident when, in 1838, a group of Native Americans from Mission San Luis Rey petitioned government officials in San Diego to relieve suffering at the hands of the rancheros:

We have suffered incalculable losses, for some of which we are in part to be blamed for because many of us have abandoned the Mission ... We plead and beseech you ... to grant us a Rev. Father for this place. We have been accustomed to the Rev. Fathers and to their manner of managing the duties. We labored under their intelligent directions, and we were obedient to the Fathers according to the regulations, because we considered it as good for us. (Brigandi 1998:21)

Native American culture had been disrupted to the point where they could no longer rely upon prehistoric subsistence and social patterns. Not only does this illustrate how dependent the Native Americans had become upon the missionaries, but it also indicates a marked contrast in the way the Spanish treated the Native Americans compared to the Mexican and United States ranchers. Spanish colonialism (missions) is based upon utilizing human resources while integrating them into their society. The Mexican and American ranchers did not accept Native Americans into their social order and used them specifically for the extraction of labor, resources, and profit. Rather than being incorporated, they were either subjugated or exterminated (Cook 1976).

By 1846, tensions between the United States and Mexico had escalated to the point of war (Rolle 1969). In order to reach a peaceful agreement, the Treaty of Guadalupe Hidalgo was put into effect in 1848, which resulted in the annexation of California to the United States. Once California opened to the United States, waves of settlers moved in searching for gold mines, business opportunities, political opportunities, religious freedom, and adventure (Rolle 1969; Caughey 1970). By 1850, California had become a state and was eventually divided into 27 separate counties. While a much larger population was now settling in California, this was primarily in the central valley, San Francisco, and the Gold Rush region of the Sierra Nevada mountain range (Rolle 1969; Caughey 1970). During this time, southern California grew at a much slower pace than northern California and was still dominated by the cattle industry that was established during the earlier rancho period. However, by 1859, the first United States Post Office in what would eventually become Riverside County was set up at John Magee's store on the Temecula Rancho (Gunther 1984).

During the same decade, circa 1852, the Native Americans of southern Riverside County, including the Luiseño and the Cahuilla, thought they had signed a treaty resulting in their

ownership of all lands from Temecula to Aguanga east to the desert, including the San Jacinto Valley and the San Gorgonio Pass. The Temecula Treaty also included food and clothing provisions for the Native Americans. However, Congress never ratified these treaties, and the promise of one large reservation was rescinded (Brigandi 1998).

With the completion of the Southern Pacific Railroad in 1869, southern California saw its first major population expansion. The population boom continued circa 1874 with the completion of connections between the Southern Pacific Railroad in Sacramento to the transcontinental Central Pacific Railroad in Los Angeles (Rolle 1969; Caughey 1970). The population influx brought farmers, land speculators, and prospective developers to the region. As the Jurupa area became more and more populated, circa 1870, Judge John Wesley North and a group of associates founded the city of Riverside on part of the former rancho.

Although the first orange trees were planted in Riverside County circa 1871, it was not until a few years later when a small number of Brazilian navel orange trees were established that the citrus industry truly began in the region (Patterson 1971). The Brazilian navel orange was well suited to the climate of Riverside County and thrived with assistance from several extensive irrigation projects. At the close of 1882, an estimated half a million citrus trees were present in California. It is estimated that nearly half of that population was in Riverside County. Population growth and 1880s tax revenue from the booming citrus industry prompted the official formation of Riverside County in 1893 out of portions of what was once San Bernardino County (Patterson 1971).

Shortly thereafter, with the start of World War I, the United States began to develop a military presence in Riverside County with the construction of March Air Reserve Base. During World War II, Camp Haan and Camp Anza were constructed in what is now the current location of the National Veteran's Cemetery. In the decades that followed, populations spread throughout the county into Lake Elsinore, Corona, Norco, Murrieta, and Wildomar. However, a significant portion of the county remained largely agricultural well into the 1970s. Following the 1970s, Riverside saw a period of dramatic population increase as the result of new development, more than doubling the population of the county with a population of over 1.3 million residents (Patterson 1971).

History of the Lake Elsinore Area

The Lake Elsinore region started to develop in 1883 with the emergence of the railroad, which brought a steady stream of settlers, miners, and prospectors to the area, thereby creating the community of Lake Elsinore. Lake Elsinore was called "*Paiakhche* by the Luiseño Indians (Kroeber 1907:147) and *Laguna Grande*, meaning 'Big Lagoon,' by the Spaniards and Mexicans" (Gunther 1984). When Franklin H. Heald, Donald Graham, and William Collier bought the then 12,832-acre La Laguna Rancho in 1883, it was renamed Elsinore and subdivided into lots to be sold (Gunther 1984). That same year, Heald renamed the lake "Lake Elsinore." Beginning in the early 1800s, the lake began an almost constant cycle of going completely dry and then overflowing

(Gunther 1984).

By 1884, the developing town had a school and post office established, and in 1893, the town officially became recognized as the city of Lake Elsinore. In the late nineteenth century, the town experienced a boom due to the mining of gold between the towns of Elsinore and nearby Perris. The most prosperous mine was Good Hope Mine, which produced over \$2 million worth of gold (Hudson 1978). In addition to the mining of gold, Lake Elsinore is also known for the mining of tin ore, coal, clay, and asbestos. Following the mining boom, Lake Elsinore began to bring in many tourists due to boat and auto racing and the lakefront resorts. The earliest attraction of Lake Elsinore was the legendary Crescent Bathhouse, which was built in 1923. Historically, the Crescent Bathhouse has attracted many Hollywood stars, such as Will Rodgers. The bathhouse was declared a National Historic Place on July 30, 1975 (Hudson 1978). In 1932, the Ortega Highway and the airport were opened, continuing to bring people into the city. The Great Depression limited expansion, except for the completion of a new post office in 1932 (Hudson 1978).

III. SCOPE OF WORK

In order to determine the presence of cultural resources within the proposed project, the archaeological investigation consisted of the following tasks:

- 1) An archaeological records search was requested from the EIC at UCR to gather any and all information regarding recorded cultural resources within or adjacent to the project.
- 2) The initial archaeological survey of the property was accomplished by conducting a structured intensive reconnaissance that followed 10-meter survey transects, which covered all areas of the project. All areas of disturbed ground and any rodent burrows were analyzed for evidence of buried archaeological deposits.
- 3) This archaeological technical report was prepared to present the results of the field survey, impact analysis, and presentation of any mitigation measures required for project approval.

IV. RESULTS OF STUDY

Background Research and Results of Record Searches

BFSA requested a records search for the project and surrounding one-mile radius from the EIC at UCR on March 10, 2022 (Appendix B); however, due to the evolving circumstances surrounding the COVID-19 pandemic, records search access has become limited and results are delayed for the foreseeable future. However, in 2017, BFSA previously studied the northernmost parcel (APN 379-230-001) (Smith and Goralogia 2017); therefore, for the purposes of this review,

the 2017 records search data was utilized. When the records search results are received from the EIC, an updated report will be provided to the City of Lake Elsinore. According to the 2017 data, 26 cultural resource properties are located within a one-mile radius of the project, none of which are recorded within the project boundaries (Table 1). One of these sites, P-33-007232, was recorded by the EIC as being directly northwest of the current project boundaries. Site P-33-007232 was recorded as a 1900 vernacular ranch house built by Sam Stewart, “one of the men influential in the early founding of Lake Elsinore” (Warner 1981). However, according to the site record form (Warner 1981), the residence is located at 16625 Lakeshore Drive, which is actually located immediately southeast of the Lakeshore Drive Project, instead of directly northwest, as mapped by the EIC. The Sam Stewart residence has not been formally designated for inclusion on either the National Register of Historic Places nor the California Register of Historical Resources at this location, and it appears to have been either previously demolished or removed.

Table 1
Previously Recorded Archaeological Sites
Within a One-Mile Radius of the Project

Site Number	Site Description
RIV-4044/H	Historic Holiday Park mobile home remnants and a prehistoric lithic scatter
RIV-4319/H	Historic walnut and citrus ranch with associated houses, outbuildings, and a concrete reservoir
RIV-4320/H	Historic walnut ranch with associated houses and warehouses
RIV-5782	Prehistoric bedrock milling feature and a prehistoric lithic scatter
RIV-5783	Prehistoric lithic scatter
RIV-5784/H	Historic structure foundations and landscaping
P-33-007151, P-33-007155, P-33-007171, P-33-007203, P-33-007204, P-33-007206, P-33-007207, P-33-007210, P-33-007211, P-33-007212, P-33-007213, P-33-007214, and P-33-007232	Historic residential structure
RIV-6173	Prehistoric habitation site
P-33-011003	Historic street landscaping
P-33-020982	Historic isolate
P-33-024875, P-33-024877, and P-33-024878	Prehistoric isolate
RIV-12,332	Historic residential complex foundations/structure pads

The records search results also indicated that 25 cultural resource studies (Appendix B) have been conducted within a one-mile radius of the project, one of which (Smith and Goralogia 2017) includes the project boundary. The 2017 study by BFSA covered the northernmost parcel (APN 379-230-001) and was negative for the presence of cultural resources (Smith and Goralogia 2017). The complete 2017 records search results are presented in Appendix B.

BFSA also requested a records search of the Sacred Lands File of the NAHC on March 10, 2022. As of the date of this report, no response has been received from the NAHC. Original correspondence is provided in Appendix C.

The records search and literature review suggest that there is a potential for primarily historic sites to be contained within the boundaries of the property. Given the historic settlement of the region, in addition to the frequency of historic sites and very few prehistoric sites known to be surrounding the project, there is a potential for archaeological discoveries associated with the historic occupation of the Lake Elsinore area.

Field Reconnaissance

Principal Investigator Brian F. Smith directed the pedestrian survey of the project on March 1, 2022 with assistance from Archaeological Field Director Clarence Hoff. Aerial photographs, maps, and a compass permitted orientation and location of project boundaries. Where possible, narrow transect paths were employed to ensure maximum lot coverage. All exposed ground was inspected for cultural materials. A survey form, field notes, and photographs documented the survey work undertaken (Plates 1 to 3).

Visibility during the survey was approximately 50 percent due to dense native and non-native grasses, weeds, mustard plants, Russian thistle, and eucalyptus trees primarily in the northwest and northeast corners. The entire property appears to have been disturbed in the past. The southeast quarter of the property appears to have been recently excavated for a water retention basin (see Plate 3). During the survey, BFSA staff carefully inspected all exposed ground surfaces, including rodent burrows and disturbed areas. No cultural resources, either historic or prehistoric, were discovered during the survey. The lack of prehistoric sites is likely due to the absence of bedrock and dependable water sources at this location.



Plate 1: Overview of the project, facing north.



Plate 2: Overview of the project, facing west.



Plate 3: Overview of the recently excavated retention basin in the southeast quarter of the project, facing south.

V. RECOMMENDATIONS

No cultural resources were identified during the archaeological survey of the Lakeshore Drive Project, nor did the records search indicate the existence of any recorded sites on the property. Based upon the previous ground disturbance and the absence of recorded cultural resources within the project boundaries, there is little potential for cultural resources to be present/disturbed by the proposed project. Therefore, no further archaeological action is recommended as a condition of permit approval, nor are site-specific mitigation measures recommended.

VI. CERTIFICATION

I hereby certify that the statements furnished above and in the attached exhibits present the data and information required for this archaeological report, and that the facts, statements, and information presented are true and correct to the best of my knowledge and belief, and have been compiled in accordance with CEQA criteria as defined in Section 15064.5.



Brian F. Smith
Principal Investigator

March 14, 2022

Date

VII. REFERENCES

Bean, Lowell John

- 1978 Cahuilla. In *Handbook of North American Indians*, Vol. 8. California, edited by Robert F. Heizer. Smithsonian Institution, Washington, D.C.

Bean, Lowell John and Florence C. Shipek

- 1978 Luiseño. In *Handbook of North American Indians* (Vol. 8), California, edited by R.F. Heizer. Smithsonian Institution, Washington, D.C.

Bean, Lowell John and Charles R. Smith

- 1978 Gabrielino. In *Handbook of North American Indians*, Vol 8. California, edited by Robert F. Heizer. Smithsonian Institution, Washington, D.C.

Beattie, George W. and Helen P. Beattie

- 1939 *Heritage of the Valley: San Bernardino's First Century*. Biobooks, Oakland, California.

Brigandi, Phil

- 1998 *Temecula: At the Crossroads of History*. Heritage Media Corporation, Encinitas, California.

Byrd, Brian F.

- 1998 Harvesting the Littoral Landscape During the Late Holocene: New Perspectives from Northern San Diego County. *Journal of California and Great Basin Anthropology* 20(2):195-218.

Caughey, John W.

- 1970 *California, A Remarkable State's Life History*. Prentice-Hall Inc., Englewood Cliffs, New Jersey.

Chapman, Charles E.

- 1921 *A History of California: The Spanish Period*. The Macmillan Company, New York.

Cook, Sherburne F.

- 1976 *The Conflict Between the California Indian and White Civilization*. University of California Press, Berkeley and Los Angeles, California.

Engelhardt, Zephyrin

- 1921 *San Luis Rey Mission, The King of the Missions*. James M. Barry Company, San Francisco, California.

Erlandson, Jon M. and Roger H. Colten (editors)

- 1991 An Archaeological Context for Early Holocene Sites on the California Coast. In *Hunter-Gatherers of Early Holocene Coastal California*, edited by Jon M. Erlandson and Roger H. Colten, pp. 101–111. Perspectives in California Archaeology 1. Institute of Archaeology, University of California, Los Angeles.

Fagan, B.

- 1991 *Ancient North America: The Archaeology of a Continent*. Thames and Hudson. London.

Gallegos, Dennis

- 1987 A Review and Synthesis of Environmental and Cultural Material for the Batiquitos Lagoon Region. In *San Dieguito-La Jolla: Chronology and Controversy*. Editor. San Diego County Archaeological Society Research Paper 1.
- 1992 Patterns and Implications of Coastal Settlement in San Diego County: 9000 to 1300 Years Ago. In *Essays on the Prehistory of Maritime California*, edited by Terry Jones. Center for Archaeological Research, Davis, California.

Gunther, Jane Davies

- 1984 *Riverside County, California, Place Names: Their Origins and Their Stories*. Rubidoux Printing, Riverside, California.

Handley, Charles

- 1967 The Sun City Story. *Sun City News* 2 February:6, 15-19. Sun City, California.

Harris, Marvin

- 1991 *Cultural Anthropology*. HarperCollins Publishers Inc., New York, New York.

Hudson, Tom

- 1978 *Lake Elsinore's Valley, Its Story, 1776-1977*. Lake Elsinore Bicentennial Commission, 1978.

- Koerper, Henry, C., Jonathan E. Ericson, Christopher E. Drover, and Paul E. Langenwalter, II
1986 Obsidian Exchange in Prehistoric Orange County. *Pacific Coast Archaeological Society Quarterly* 22(1):33–69.
- Kowta, M.
1969 The Sayles Complex: A Late Milling Stone Assemblage from Cajon Pass and the Ecological Implications of Scraper Planes. *University of California Publications in Anthropology* 6.
- Kroeber, A.L.
1976 *Handbook of the Indians of California*. Reprinted. Dover Editions, Dover Publications, Inc., New York. Originally published 1925, Bulletin No. 78, U.S. Government Printing Office, Washington, D.C.
- Laylander, Don (editor)
1985 Some Linguistic Approaches to Southern California's Prehistory. *San Diego State University Cultural Resource Management Casual Papers* 2(1):14–58.
- Laylander, Don, Jerry Schaefer, Nick Doose, Jessica Hennessey, and Ian Scharlotta
2014 A Regional Synthesis of Prehistoric Archaeological Landscapes in the Jacumba/McCain Valley Region, San Diego and Imperial Counties, California. Prepared for the Bureau of Land Management and San Diego Gas & Electric by ASM Affiliates, Carlsbad, California.
- Martin, P.S.
1967 Prehistoric Overkill. In *Pleistocene Extinctions: The Search for a Cause*, edited by P. Martin and H.E. Wright. Yale University Press: New Haven.

1973 The Discovery of America. *Science* 179(4077): 969-974.
- Masters, Patricia M.
1983 Detection and Assessment of Prehistoric Artifact Sites off the Coast of Southern California. In *Quaternary Coastlines and Marine Archaeology: Towards the Prehistory of Land Bridges and Continental Shelves*, edited by P.M. Masters and N.C. Flemming, pp. 189-213. Academic Press, London.
- Meighan, Clement W.
1954 A Late Complex in Southern California Prehistory. *Southwestern Journal of Anthropology* 10(2).
- Miller, J.
1966 *The Present and Past Molluscan Faunas and Environments of Four Southern California Coastal Lagoons*. Master's thesis. University of California, San Diego.

Moratto, Michael J.

1984 *California Archaeology*. Academic Press, New York.

Moriarty, James R., III

1966 Culture Phase Divisions Suggested by Topological Change Coordinated with Stratigraphically Controlled Radiocarbon Dating in San Diego. *Anthropological Journal of Canada* 4(4):20–30.

Moss, M.L. and J. Erlandson

1995 Reflections on North American Coast Prehistory. *Journal of World Prehistory* 9(1):1–46.

National Resources Conservation Service (NRCS), U.S. Department of Agriculture

2022 Web Soil Survey. Electronic document, <https://casoilresource.lawr.ucdavis.edu/gmap/>, accessed March 11, 2022.

Patterson, Tom

1971 *A Colony for California: Riverside's First Hundred Years*. Press-Enterprise, Riverside, California.

Pourade, Richard F.

1961 *Time of the Bells*. The History of San Diego Volume 2. Union-Tribune Publishing Company, San Diego, California.

1963 *The Silver Dons*. The History of San Diego Volume 3. Union-Tribune Publishing Company, San Diego, California.

Raven-Jennings, Shelly, Brian F. Smith and Johnna L. Buysse

1996 The Results of a Cultural Resource Study at the 4S Ranch, Rancho Bernardo, County of San Diego. Unpublished report on file at the South Coastal Information Center at San Diego State University, San Diego, California.

Rogers, Malcolm J.

1939 Early Lithic Industries of the Lower Basin of the Colorado River and Adjacent Desert Areas. In *San Diego Museum Papers* (No. 3 – 1989 printing). San Diego Museum of Man, San Diego, California.

Rolle, Andrew F.

1969 *California: A History* (Second Edition). Thomas Y. Crowell Company, New York.

Shumway, George, Carl L. Hubbs, and James R. Moriarty, III

1961 Scripps Estate Site, San Diego, California: A La Jolla Site Dated 5,460-7,370 Years Before the Present. *Annals of the New York Academy of Sciences* 93(3).

Smith, Brian F. and Elena C. Goralogia

- 2017 A Phase I Cultural Resources Survey for the Lakeview Manor Project, Lake Elsinore, California. Brian F. Smith and Associates, Inc. Unpublished report on file at the Eastern Information Center at the University of California at Riverside, Riverside, California.

Smith, Brian F. and James R. Moriarty, III

- 1985 An Archaeological Reconnaissance of San Diego Motor Racing Park, Otay Mesa, San Diego. Unpublished report on file at the City of San Diego, Environmental Analysis Division, San Diego, California.

Strong, William Duncan

- 1929 Aboriginal Society in Southern California. *University of California Publications in American Archaeology and Ethnology* 26(1).

Sutton, Mark Q.

- 2009 People and Language: Defining the Takic Expansion into Southern California. *Pacific Coast Archaeological Society Quarterly* 41(2&3):33–93.

- 2011a The Palomar Tradition and Its Place in the Prehistory of Southern California. *Pacific Coast Archaeological Society Quarterly* 44(4):1–74.

- 2011b *A Prehistory of North America*. Routledge, New York.

Sutton, Mark Q. and Jill K. Gardener

- 2010 Reconceptualizing the Encinitas Tradition of Southern California. *Pacific Coast Archaeological Society Quarterly* 42(4):1–64.

True, Delbert L.

- 1958 An Early Complex in San Diego County, California. *American Antiquity* 23(3).

- 1980 The Pauma Complex in Northern San Diego County. *The Journal of New World Archaeology* 3(4):1–39

Wallace, William J.

- 1955 A Suggested Chronology for Southern California Coastal Archaeology. *Southwestern Journal of Anthropology* 11:214–230.

Warner, Jim

- 1981 Archaeological Site Record Form for P-33-0072232. On file at the Eastern Information Center at the University of California at Riverside, Riverside, California.

Warren, Claude N. (editor)

- 1968 Cultural Tradition and Ecological Adaptation on the Southern Coast. In *Archaic Prehistory in the Western United States*, C.I. Williams, editor. *Eastern New Mexico*

University Contributions in Anthropology 1(3):1–14.

Warren, Claude N. and D.L. True

- 1961 The San Dieguito Complex and its Place in California Prehistory, In *Archaeological Survey Annual Report 1960-1961*. University of California Press, Los Angeles, California.

Warren, Claude N., D.L. True, and Ardith A. Eudey

- 1961 Early Gathering Complexes of Western San Diego County: Results and Interpretations of an Archaeological Survey. *Archaeological Survey Annual Report 1960-1961*. University of California, Los Angeles.

Wirths, Todd A.

- 2022 Paleontological Assessment for the Lakeshore Drive Project, Lake Elsinore, California. Brian F. Smith and Associates, Inc. Report in progress.

APPENDIX A

Resumes of Key Personnel

Brian F. Smith, MA

Owner, Principal Investigator

Brian F. Smith and Associates, Inc.
14010 Poway Road • Suite A •
Phone: (858) 679-8218 • Fax: (858) 679-9896 • E-Mail: bsmith@bfsa-ca.com



Education

Master of Arts, History, University of San Diego, California 1982

Bachelor of Arts, History, and Anthropology, University of San Diego, California 1975

Professional Memberships

Society for California Archaeology

Experience

Principal Investigator
Brian F. Smith and Associates, Inc.

1977–Present
Poway, California

Brian F. Smith is the owner and principal historical and archaeological consultant for Brian F. Smith and Associates. Over the past 32 years, he has conducted over 2,500 cultural resource studies in California, Arizona, Nevada, Montana, and Texas. These studies include every possible aspect of archaeology from literature searches and large-scale surveys to intensive data recovery excavations. Reports prepared by Mr. Smith have been submitted to all facets of local, state, and federal review agencies, including the US Army Corps of Engineers, the Bureau of Land Management, the Bureau of Reclamation, the Department of Defense, and the Department of Homeland Security. In addition, Mr. Smith has conducted studies for utility companies (Sempra Energy) and state highway departments (CalTrans).

Professional Accomplishments

These selected major professional accomplishments represent research efforts that have added significantly to the body of knowledge concerning the prehistoric life ways of cultures once present in the Southern California area and historic settlement since the late 18th century. Mr. Smith has been principal investigator on the following select projects, except where noted.

Downtown San Diego Mitigation and Monitoring Reporting Programs: Large numbers of downtown San Diego mitigation and monitoring projects, some of which included Broadway Block (2019), 915 Grape Street (2019), 1919 Pacific Highway (2018), Moxxy Hotel (2018), Makers Quarter Block D (2017), Ballpark Village (2017), 460 16th Street (2017), Kettner and Ash (2017), Bayside Fire Station (2017), Pinnacle on the Park (2017), IDEA1 (2016), Blue Sky San Diego (2016), Pacific Gate (2016), Pendry Hotel (2015), Cisterra Sempra Office Tower (2014), 15th and Island (2014), Park and G (2014), Comm 22 (2014), 7th and F Street Parking (2013), Ariel Suites (2013), 13th and Marker (2012), Strata (2008), Hotel Indigo (2008), Lofts at 707 10th Avenue Project (2007), Breeza (2007), Bayside at the Embarcadero (2007), Aria (2007), Icon (2007), Vantage Pointe (2007), Aperture (2007), Sapphire Tower (2007), Lofts at 655 Sixth Avenue (2007), Metrowork (2007), The Legend (2006), The Mark (2006), Smart Corner (2006), Lofts at 677 7th Avenue (2005), Aloft on Cortez Hill (2005), Front and Beech Apartments (2003), Bella Via Condominiums (2003), Acqua Vista Residential Tower (2003), Northblock Lofts (2003), Westin Park Place Hotel (2001), Parkloft

Apartment Complex (2001), Renaissance Park (2001), and Laurel Bay Apartments (2001).

1900 and 1912 Spindrift Drive: An extensive data recovery and mitigation monitoring program at the Spindrift Site, an important prehistoric archaeological habitation site stretching across the La Jolla area. The project resulted in the discovery of over 20,000 artifacts and nearly 100,000 grams of bulk faunal remains and marine shell, indicating a substantial occupation area (2013-2014).

San Diego Airport Development Project: An extensive historic assessment of multiple buildings at the San Diego International Airport and included the preparation of Historic American Buildings Survey documentation to preserve significant elements of the airport prior to demolition (2017-2018).

Citracado Parkway Extension: A still-ongoing project in the city of Escondido to mitigate impacts to an important archaeological occupation site. Various archaeological studies have been conducted by BFSa resulting in the identification of a significant cultural deposit within the project area.

Westin Hotel and Timeshare (Grand Pacific Resorts): Data recovery and mitigation monitoring program in the city of Carlsbad consisted of the excavation of 176 one-square-meter archaeological data recovery units which produced thousands of prehistoric artifacts and ecofacts, and resulted in the preservation of a significant prehistoric habitation site. The artifacts recovered from the site presented important new data about the prehistory of the region and Native American occupation in the area (2017).

The Everly Subdivision Project: Data recovery and mitigation monitoring program in the city of El Cajon resulted in the identification of a significant prehistoric occupation site from both the Late Prehistoric and Archaic Periods, as well as producing historic artifacts that correspond to the use of the property since 1886. The project produced an unprecedented quantity of artifacts in comparison to the area encompassed by the site, but lacked characteristics that typically reflect intense occupation, indicating that the site was used intensively for food processing (2014-2015).

Ballpark Village: A mitigation and monitoring program within three city blocks in the East Village area of San Diego resulting in the discovery of a significant historic deposit. Nearly 5,000 historic artifacts and over 500,000 grams of bulk historic building fragments, food waste, and other materials representing an occupation period between 1880 and 1917 were recovered (2015-2017).

Archaeology at the Padres Ballpark: Involved the analysis of historic resources within a seven-block area of the "East Village" area of San Diego, where occupation spanned a period from the 1870s to the 1940s. Over a period of two years, BFSa recovered over 200,000 artifacts and hundreds of pounds of metal, construction debris, unidentified broken glass, and wood. Collectively, the Ballpark Project and the other downtown mitigation and monitoring projects represent the largest historical archaeological program anywhere in the country in the past decade (2000-2007).

4S Ranch Archaeological and Historical Cultural Resources Study: Data recovery program consisted of the excavation of over 2,000 square meters of archaeological deposits that produced over one million artifacts, containing primarily prehistoric materials. The archaeological program at 4S Ranch is the largest archaeological study ever undertaken in the San Diego County area and has produced data that has exceeded expectations regarding the resolution of long-standing research questions and regional prehistoric settlement patterns.

Charles H. Brown Site: Attracted international attention to the discovery of evidence of the antiquity of man in North America. Site located in Mission Valley, in the city of San Diego.

Del Mar Man Site: Study of the now famous Early Man Site in Del Mar, California, for the San Diego Science Foundation and the San Diego Museum of Man, under the direction of Dr. Spencer Rogers and Dr. James R. Moriarty.

Old Town State Park Projects: Consulting Historical Archaeologist. Projects completed in the Old Town State Park involved development of individual lots for commercial enterprises. The projects completed in Old Town include Archaeological and Historical Site Assessment for the Great Wall Cafe (1992), Archaeological Study for the Old Town Commercial Project (1991), and Cultural Resources Site Survey at the Old San Diego Inn (1988).

Site W-20, Del Mar, California: A two-year-long investigation of a major prehistoric site in the Del Mar area of the city of San Diego. This research effort documented the earliest practice of religious/ceremonial activities in San Diego County (circa 6,000 years ago), facilitated the projection of major non-material aspects of the La Jolla Complex, and revealed the pattern of civilization at this site over a continuous period of 5,000 years. The report for the investigation included over 600 pages, with nearly 500,000 words of text, illustrations, maps, and photographs documenting this major study.

City of San Diego Reclaimed Water Distribution System: A cultural resource study of nearly 400 miles of pipeline in the city and county of San Diego.

Master Environmental Assessment Project, City of Poway: Conducted for the City of Poway to produce a complete inventory of all recorded historic and prehistoric properties within the city. The information was used in conjunction with the City's General Plan Update to produce a map matrix of the city showing areas of high, moderate, and low potential for the presence of cultural resources. The effort also included the development of the City's Cultural Resource Guidelines, which were adopted as City policy.

Draft of the City of Carlsbad Historical and Archaeological Guidelines: Contracted by the City of Carlsbad to produce the draft of the City's historical and archaeological guidelines for use by the Planning Department of the City.

The Mid-Bayfront Project for the City of Chula Vista: Involved a large expanse of undeveloped agricultural land situated between the railroad and San Diego Bay in the northwestern portion of the city. The study included the analysis of some potentially historic features and numerous prehistoric

Cultural Resources Survey and Test of Sites Within the Proposed Development of the Audie Murphy Ranch, Riverside County, California: Project manager/director of the investigation of 1,113.4 acres and 43 sites, both prehistoric and historic—including project coordination; direction of field crews; evaluation of sites for significance based on County of Riverside and CEQA guidelines; assessment of cupule, pictograph, and rock shelter sites, co-authoring of cultural resources project report. February- September 2002.

Cultural Resources Evaluation of Sites Within the Proposed Development of the Otay Ranch Village 13 Project, San Diego County, California: Project manager/director of the investigation of 1,947 acres and 76 sites, both prehistoric and historic—including project coordination and budgeting; direction of field crews; assessment of sites for significance based on County of San Diego and CEQA guidelines; co-authoring of cultural resources project report. May-November 2002.

Cultural Resources Survey for the Remote Video Surveillance Project, El Centro Sector, Imperial County: Project manager/director for a survey of 29 individual sites near the U.S./Mexico Border for proposed video surveillance camera locations associated with the San Diego Border barrier Project—project coordination and budgeting; direction of field crews; site identification and recordation; assessment of potential impacts to cultural resources; meeting and coordinating with U.S. Army Corps of Engineers, U.S. Border Patrol, and other government agencies involved; co-authoring of cultural resources project report. January, February, and July 2002.

Cultural Resources Survey and Test of Sites Within the Proposed Development of the Meniffee West GPA, Riverside County, California: Project manager/director of the investigation of nine sites, both prehistoric and historic—including project coordination and budgeting; direction of field crews; assessment of sites

for significance based on County of Riverside and CEQA guidelines; historic research; co-authoring of cultural resources project report. January-March 2002.

Cultural Resources Survey and Test of Sites Within the Proposed French Valley Specific Plan/EIR, Riverside County, California: Project manager/director of the investigation of two prehistoric and three historic sites—included project coordination and budgeting; survey of project area; Native American consultation; direction of field crews; assessment of sites for significance based on CEQA guidelines; cultural resources project report in prep. July-August 2000.

Cultural Resources Survey and Test of Sites Within the Proposed Development of the Menifee Ranch, Riverside County, California: Project manager/director of the investigation of one prehistoric and five historic sites—included project coordination and budgeting; direction of field crews; feature recordation; historic structure assessments; assessment of sites for significance based on CEQA guidelines; historic research; co-authoring of cultural resources project report. February-June 2000.

Salvage Mitigation of a Portion of the San Diego Presidio Identified During Water Pipe Construction for the City of San Diego, California: Project archaeologist/director—included direction of field crews; development and completion of data recovery program; management of artifact collections cataloging and curation; data synthesis and authoring of cultural resources project report in prep. April 2000.

Enhanced Cultural Resource Survey and Evaluation for the Tyrian 3 Project, La Jolla, California: Project manager/director of the investigation of a single-dwelling parcel—included project coordination; assessment of parcel for potentially buried cultural deposits; authoring of cultural resources project report. April 2000.

Enhanced Cultural Resource Survey and Evaluation for the Lamont 5 Project, Pacific Beach, California: Project manager/director of the investigation of a single-dwelling parcel—included project coordination; assessment of parcel for potentially buried cultural deposits; authoring of cultural resources project report. April 2000.

Enhanced Cultural Resource Survey and Evaluation for the Reiss Residence Project, La Jolla, California: Project manager/director of the investigation of a single-dwelling parcel—included project coordination; assessment of parcel for potentially buried cultural deposits; authoring of cultural resources project report. March-April 2000.

Salvage Mitigation of a Portion of Site SDM-W-95 (CA-SDI-211) for the Poinsettia Shores Santalina Development Project and Caltrans, Carlsbad, California: Project archaeologist/ director—included direction of field crews; development and completion of data recovery program; management of artifact collections cataloging and curation; data synthesis and authoring of cultural resources project report in prep. December 1999-January 2000.

Survey and Testing of Two Prehistoric Cultural Resources for the Airway Truck Parking Project, Otay Mesa, California: Project archaeologist/director—included direction of field crews; development and completion of testing recovery program; assessment of site for significance based on CEQA guidelines; authoring of cultural resources project report, in prep. December 1999-January 2000.

Cultural Resources Phase I and II Investigations for the Tin Can Hill Segment of the Immigration and Naturalization Services Triple Fence Project Along the International Border, San Diego County, California: Project manager/director for a survey and testing of a prehistoric quarry site along the border—NRHP eligibility assessment; project coordination and budgeting; direction of field crews; feature recordation; meeting and coordinating with U.S. Army Corps of Engineers; co-authoring of cultural resources project report. December 1999-January 2000.

Mitigation of a Prehistoric Cultural Resource for the Westview High School Project for the City of San Diego, California: Project archaeologist/ director—including direction of field crews; development and completion of data recovery program including collection of material for specialized faunal and botanical analyses; assessment of sites for significance based on CEQA guidelines; management of artifact collections cataloging and curation; data synthesis; co-authoring of cultural resources project report, in prep. October 1999-January 2000.

Mitigation of a Prehistoric Cultural Resource for the Otay Ranch SPA-One West Project for the City of Chula Vista, California: Project archaeologist/director—including direction of field crews; development of data recovery program; management of artifact collections cataloging and curation; assessment of site for significance based on CEQA guidelines; data synthesis; authoring of cultural resources project report, in prep. September 1999-January 2000.

Monitoring of Grading for the Herschel Place Project, La Jolla, California: Project archaeologist/ monitor—including monitoring of grading activities associated with the development of a single- dwelling parcel. September 1999.

Survey and Testing of a Historic Resource for the Osterkamp Development Project, Valley Center, California: Project archaeologist/ director—including direction of field crews; development and completion of data recovery program; budget development; assessment of site for significance based on CEQA guidelines; management of artifact collections cataloging and curation; data synthesis; authoring of cultural resources project report. July-August 1999.

Survey and Testing of a Prehistoric Cultural Resource for the Proposed College Boulevard Alignment Project, Carlsbad, California: Project manager/director —including direction of field crews; development and completion of testing recovery program; assessment of site for significance based on CEQA guidelines; management of artifact collections cataloging and curation; data synthesis; authoring of cultural resources project report, in prep. July-August 1999.

Survey and Evaluation of Cultural Resources for the Palomar Christian Conference Center Project, Palomar Mountain, California: Project archaeologist—including direction of field crews; assessment of sites for significance based on CEQA guidelines; management of artifact collections cataloging and curation; data synthesis; authoring of cultural resources project report. July-August 1999.

Survey and Evaluation of Cultural Resources at the Village 2 High School Site, Otay Ranch, City of Chula Vista, California: Project manager/director —management of artifact collections cataloging and curation; assessment of site for significance based on CEQA guidelines; data synthesis; authoring of cultural resources project report. July 1999.

Cultural Resources Phase I, II, and III Investigations for the Immigration and Naturalization Services Triple Fence Project Along the International Border, San Diego County, California: Project manager/director for the survey, testing, and mitigation of sites along border—supervision of multiple field crews, NRHP eligibility assessments, Native American consultation, contribution to Environmental Assessment document, lithic and marine shell analysis, authoring of cultural resources project report. August 1997- January 2000.

Phase I, II, and III Investigations for the Scripps Poway Parkway East Project, Poway California: Project archaeologist/project director—including recordation and assessment of multicomponent prehistoric and historic sites; direction of Phase II and III investigations; direction of laboratory analyses including prehistoric and historic collections; curation of collections; data synthesis; coauthorship of final cultural resources report. February 1994; March-September 1994; September-December 1995.

APPENDIX B

Archaeological Records Search Results

(Deleted for Public Review; Bound Separately)

APPENDIX C

NAHC Sacred Lands File Search

(Deleted for Public Review; Bound Separately)