

CITY OF LAKE ELSINORE

Annual Report



FISCAL YEAR 2021-22
COMMUNITY FACILITIES DISTRICT NO. 2007-1
(LAW ENFORCEMENT, FIRE AND PARAMEDIC SERVICES)



SPICER CONSULTING
G R O U P

Table of Contents

Sections

1	District Profile	1
2	Special Tax Information	1
3	Payment History	2

Tables

2-1	Maximum Special Tax Rates	1
2-2	Special Tax Breakdown	1

Appendix

Appendix A – Boundary Map

Community Facilities District No. 2007-1 (Law Enforcement, Fire and Paramedic Services)

1. District Profile

Project Description

Community Facilities District No. 2007-1 Services (the "CFD No. 2007-1") was formed for the purpose of providing operation and maintenance of law enforcement, fire and paramedic services.

Location

CFD No. 2007-1 consists of several different areas within Lake Elsinore. For a more accurate description of CFD No. 2007-1 please see the Boundary Map in Appendix A.

Bond Profile and Principal Amount of Bonds Outstanding

CFD No. 2007-1 is a nonbonded district.

2. Special Tax Information

Special Tax

A Special Tax is collected each year to pay service obligations for CFD No. 2007-1. The amount collected each year is determined by the Special Tax formula and can vary from year to year, but shall not exceed the maximum authorized (or permitted) Special Tax rates. The amount levied for Fiscal Year 2021-22 tax year is \$114,994.72. The Maximum Special Tax rates for Fiscal Year 2021-22 are as follows:

The Maximum Annual Special Taxes shall increase annually by two percent (2.00%), commencing Fiscal Year 2008-09, and each Fiscal Year thereafter.

*Table 2-1
Maximum Special Tax Rates*

Land Use Category	Maximum Special Tax
Developed Single Family	\$548.90
Developed Multi-family	\$274.45

*Table 2-2
Special Tax Breakdown*

Category	EDU	Levied Amount	Maximum Special Tax	% of Maximum Special Tax
Developed Single Family	153	\$83,981.70	\$83,982.18	100.00%
Developed Multi-family	113	\$31,013.02	\$31,013.03	100.00%
Total	266	\$114,994.72	\$114,995.21	100.00%

3. Payment History

Delinquencies are calculated through July 2021 and may reflect parcels that may already be on a payment plan.

Delinquency Rate for Fiscal Year 2020-21

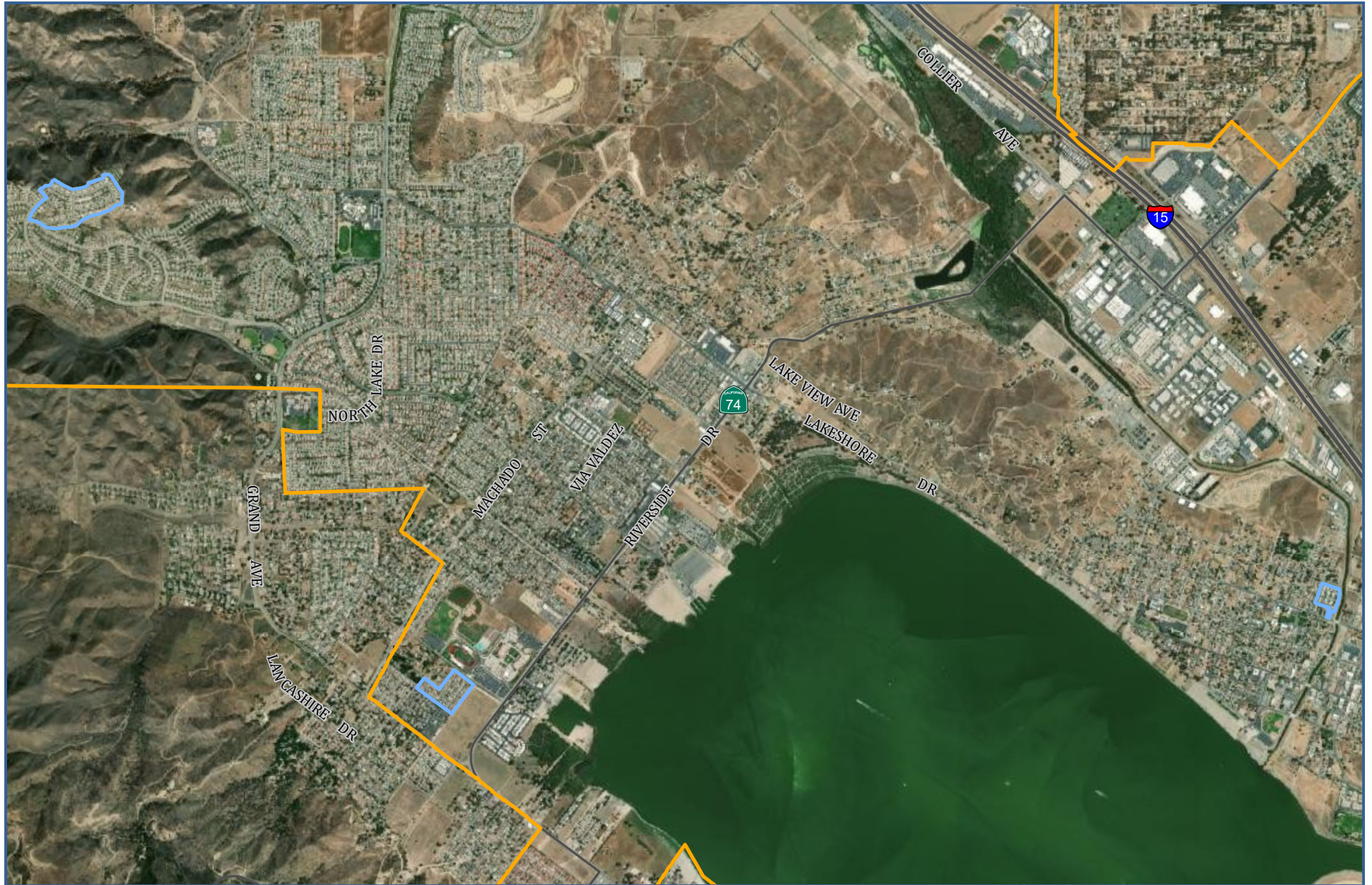
As of July 2021, there were no delinquencies in the payment of the Special Tax for CFD No. 2007-1 Services for Fiscal Year 2020-21.

APPENDIX A

Boundary Map



SPICER CONSULTING
G R O U P



BOUNDARY MAP

COMMUNITY FACILITIES DISTRICT NO. 2007-1
(LAW, FIRE, AND PARAMEDIC SERVICES)



SPICER CONSULTING
GROUP