

# CITY OF LAKE ELSINORE

Annual Report



FISCAL YEAR 2021-22  
COMMUNITY FACILITIES DISTRICT NO. 2007-6  
(HOLIDAY INN EXPRESS)



SPICER CONSULTING  
G R O U P

# Table of Contents

---

## **Sections**

1	District Profile	1
2	Special Tax Information	1
3	Payment History	1

## **Tables**

2.1	Assigned Special Tax Rates	1
2-2	Special Tax Breakdown	1

## **Appendix**

Appendix A – Boundary Map

## Community Facilities District No. 2007-6 (Holiday Inn Express)

### 1. District Profile

#### *Project Description*

Community Facilities District No. 2007-6 (the “CFD No. 2007-6” or the “District”) was formed to contribute to debt service on bonded indebtedness in Community Facilities District No. 98-1.

#### *Location*

CFD No. 2007-6 is located in the eastern portion of the City of Lake Elsinore. CFD No. 2007-6 is west of Boulder Vista Drive, east of Interstate 15 and just south of Canyon Estates Drive.

#### *Bond Profile and Principal Amount of Bonds Outstanding*

CFD No. 2007-6 is a nonbonded district.

### 2. Special Tax Information

#### *Special Tax*

The amount collected each year is determined by the Special Tax formula and can vary from year to year, but shall not exceed the maximum authorized (or permitted) Special Tax rates. The amount levied for Fiscal Year 2021-22 tax year is \$6,468.22. The Assigned Special Tax rates for Fiscal Year 2021-22 are as follows:

On each July 1, commencing July 1, 2009, the Assigned Special Tax for Services shall be increase annually by 2.00% of the amount in effect in the prior Fiscal Year.

*Table 2-1*

*Assigned Special Tax Rates*

Land Use Category	Assigned Special Tax
Developed Property (per Acre)	\$4,400.15

*Table 2-2*

*Special Tax Breakdown*

Category	Parcels	Acres	Levied Amount	Assigned Special Tax	% of Assigned Special Tax
Developed Property	1	1.47	\$6,468.22	\$6,468.22	100.00%

### 3. Payment History

Delinquencies are calculated through July 2021 and may reflect parcels that may already be on a payment plan.

#### *Delinquency Rate for Fiscal Year 2020-21*

As of July 2021, there were no delinquencies in the payment of the Special Tax for CFD No. 2007-6 for Fiscal Year 2020-21.

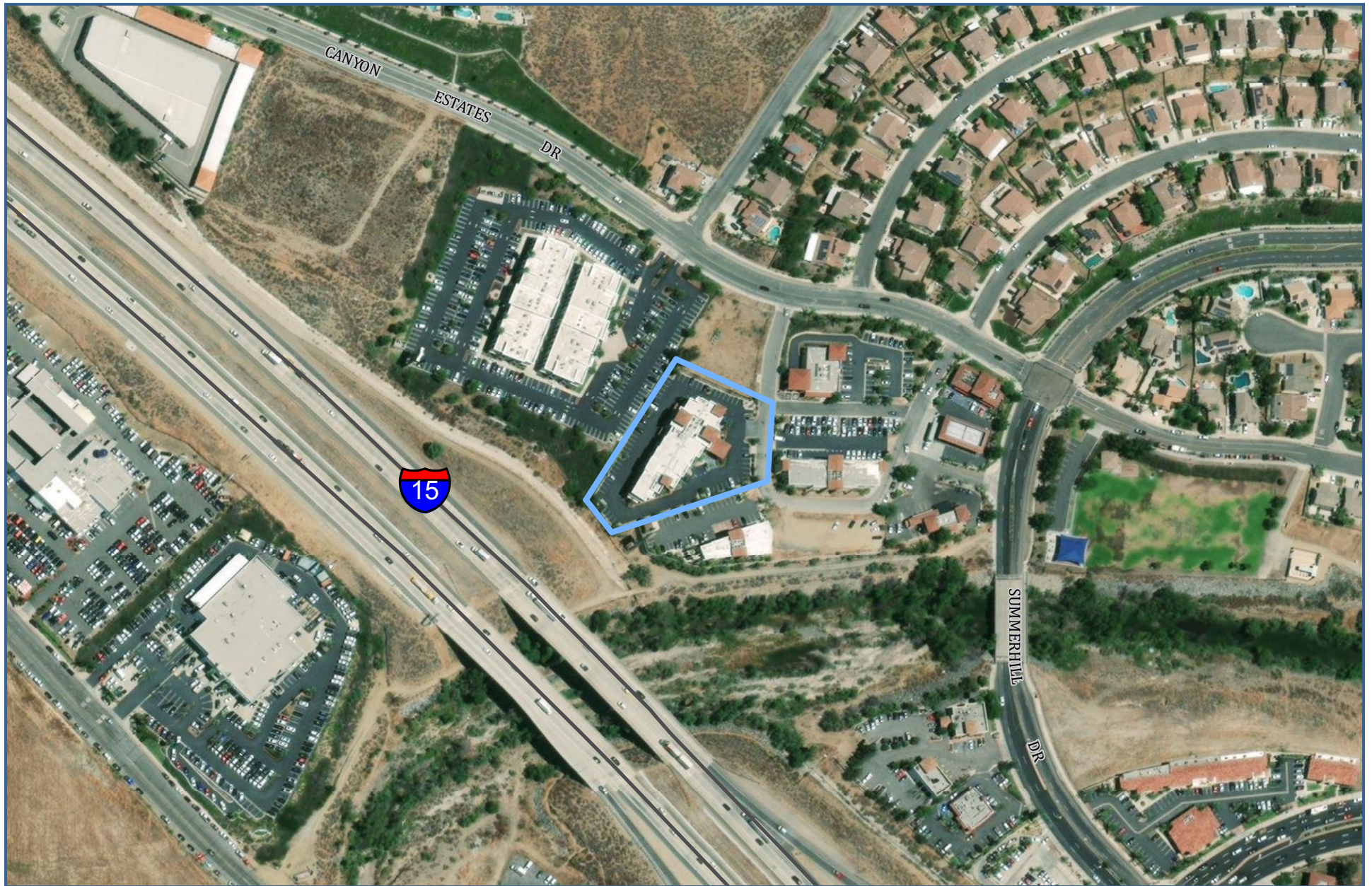
# APPENDIX A

## Boundary Map



SPICER CONSULTING  
G R O U P





## BOUNDARY MAP

COMMUNITY FACILITIES DISTRICT NO. 2007-6  
(HOLIDAY INN EXPRESS)





SPICER CONSULTING  
GROUP