

# CITY OF LAKE ELSINORE

Annual Report



FISCAL YEAR 2021-22  
COMMUNITY FACILITIES DISTRICT NO. 2009-1  
(PARK, OPEN SPACE AND STREET LIGHTING MAINTENANCE)



SPICER CONSULTING  
G R O U P

# Table of Contents

---

## **Sections**

1	District Profile	1
2	Special Tax Information	1
3	Payment History	2

## **Tables**

2-1	Maximum Special Tax Rates	1
2-2	Special Tax Breakdown	1
3-1	Delinquency Summary	2

## **Appendix**

Appendix A – Boundary Map

## Community Facilities District No. 2009-1 (Park, Open Space and Street Lighting Maintenance)

### 1. District Profile

#### *Project Description*

Community Facilities District No. 2009-1 Services (the “CFD No. 2009-1 Services” or the “District”) was formed for the purpose of funding the maintenance of the Canyon Hills Community Park, the PA 27A Park, the Canyon Hills Habitat Area and the Street Lighting, including repair and replacement of components of the Canyon Hills Community Park, the PA 27A Park, the Canyon Hills Habitat Area and Street Lighting, which have been accepted and maintained, or are reasonably expected to be accepted and maintained.

#### *Location*

CFD No. 2009-1 Services is located in the eastern portion of the City of Lake Elsinore. CFD No. 2009-1 Services is split by Canyon Hills Road just north of Cottonwood Canyon Road.

#### *Bond Profile and Principal Amount of Bonds Outstanding*

CFD No. 2009-1 Services is a nonbonded district.

### 2. Special Tax Information

#### *Special Tax*

A Special Tax is collected each year to pay service obligations for CFD No. 2009-1 Services. The amount collected each year is determined by the Special Tax formula and can vary from year to year, but shall not exceed the maximum authorized (or permitted) Special Tax rates. The amount levied for Fiscal Year 2021-22 tax year is \$734,438.92. The Maximum Special Tax rates for Fiscal Year 2021-22 are as follows:

On each July 1, commencing July 1, 2011, the Maximum Special Tax for Services shall be increase annually by two percent (2.00%) of the amount in effect in the prior Fiscal Year.

*Table 2-1  
Maximum Special Tax Rates*

Land Use Category	Maximum Special Tax
Developed Single Family	\$411.22
Developed Multi-family (per Unit)	\$205.62

*Table 2-2  
Special Tax Breakdown*

Category	Parcels	Levied Amount	Maximum Special Tax	% of Maximum Special Tax
Developed Single Family	1,786	\$734,438.92	\$734,438.92	100.00%

### 3. Payment History

#### Delinquency Rate for Fiscal Year 2020-21

As of July 2021, the delinquency rate of CFD No. 2009-1 Services for Fiscal Year 2020-21 is 0.30%.

#### Information Concerning Delinquent Parcels

CFD No. 2009-1 Services delinquency information as of July 2021 is illustrated in the table below:

*Table 3-1*  
Delinquency Summary

Fiscal Year	Levied		Delinquency		
	Parcels	Amount	Parcels	Amount	Del. Rate
2016-17	1,313	\$489,013.72	3	\$249.85	0.05%
2017-18	1,460	\$584,286.20	2	\$510.40	0.09%
2018-19	1,699	\$661,462.50	3	\$830.60	0.13%
2019-20	1,786	\$705,898.64	6	\$1,137.05	0.16%
2020-21	1,786	\$720,008.04	8	\$2,182.92	0.30%
<b>Total</b>		<b>\$3,160,669.10</b>	<b>14</b>	<b>\$4,910.82</b>	<b>0.16%</b>

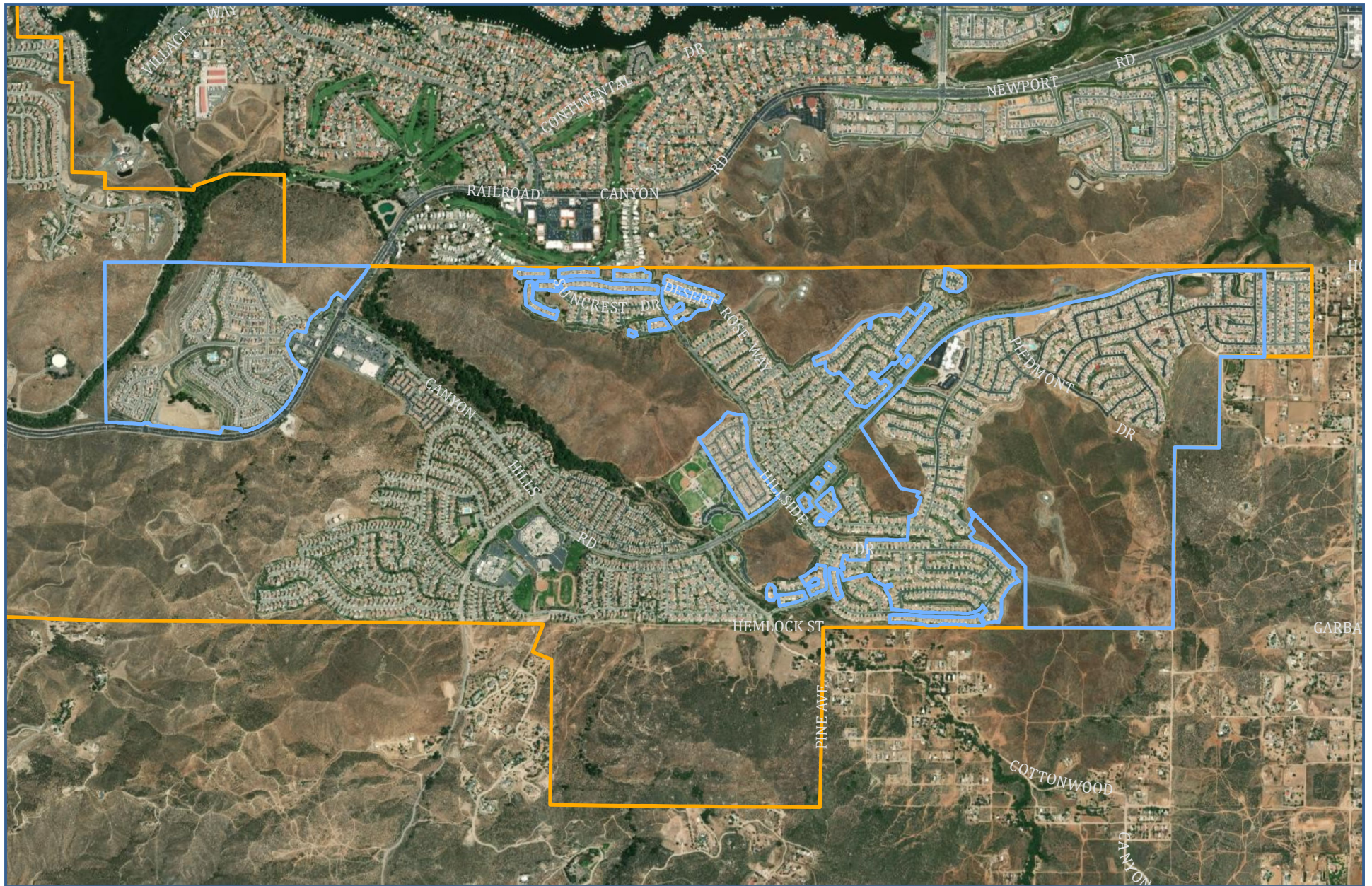
# APPENDIX A

## Boundary Map



SPICER CONSULTING  
G R O U P





## BOUNDARY MAP

COMMUNITY FACILITIES DISTRICT NO. 2009-1  
(PARKS, OPEN SPACE, AND STREET LIGHTING MAINTENANCE)





SPICER CONSULTING  
GROUP