

CITY OF LAKE ELSINORE

Annual Report



FISCAL YEAR 2021-22
COMMUNITY FACILITIES DISTRICT NO. 2015-1
(PUBLIC SAFETY)



SPICER CONSULTING
G R O U P

Table of Contents

Sections

1	District Profile	1
2	Special Tax Information	1
3	Payment History	2

Tables

2-1	Maximum Special Tax Rates	1
2-2	Special Tax Breakdown	1
3-1	Delinquency Summary	2

Appendix

Appendix A – Boundary Map

Community Facilities District No. 2015-1 (Public Safety)

1. District Profile

Project Description

Community Facilities District 2015-1 Services (the “CFD No. 2015-1 Services”) was formed for the purpose of funding police protection services (including but not limited to criminal justice services), fire protection and suppression services, and paramedic services.

Location

CFD No. 2015-1 Services consists of several different zones within the City of Lake Elsinore. For a more accurate description of CFD No. 2015-1 Services please see the Boundary Map in Appendix A.

Bond Profile and Principal Amount of Bonds Outstanding

CFD No. 2015-1 Services is a nonbonded district.

2. Special Tax Information

Special Tax

A Special Tax is collected each year to pay service obligations for CFD No. 2015-1 Services. The amount collected each year is determined by the Special Tax formula and can vary from year to year, but shall not exceed the maximum authorized (or permitted) Special Tax rates. The amount levied for Fiscal Year 2021-22 tax year is \$319,192.20. The Maximum Special Tax rates for Fiscal Year 2021-22 are as follows:

On each July 1, commencing on July 1, 2017 the Maximum Special Tax for Developed Property shall increase by i) the percentage increase in the Consumer Price Index since the beginning of the Fiscal Year, or ii) by four percent (4.00%), whichever is greater.

*Table 2-1
Maximum Special Tax Rates*

Land Use Category	Maximum Special Tax
Single Family Residential	\$833.41
Multi-Family Residential	\$509.78

*Table 2-2
Special Tax Breakdown*

Zone	Category	Parcels	Levied Amount	Maximum Special Tax	% of Maximum Special Tax
2	Developed Single Family	74	\$61,671.60	\$61,672.34	100.00%
3	Developed Single Family	81	\$67,505.40	\$67,506.21	100.00%
4	Developed Single Family	82	\$68,338.80	\$68,339.62	100.00%
7	Developed Single Family	146	\$121,676.40	\$121,677.86	100.00%
Total		383	\$319,192.20	\$319,196.03	100.00%

3. Payment History

Delinquencies are calculated through July 2021 and may reflect parcels that may already be on a payment plan.

Delinquency Rate for Fiscal Year 2020-21

As of July 2021, the delinquency rate of CFD No. 2015-1 Services for Fiscal Year 2020-21 is 0.42%.

Information Concerning Delinquent Parcels

CFD No. 2015-1 Services delinquency information as of July 2021 is illustrated in the table below:

*Table 3-1
Delinquency Summary*

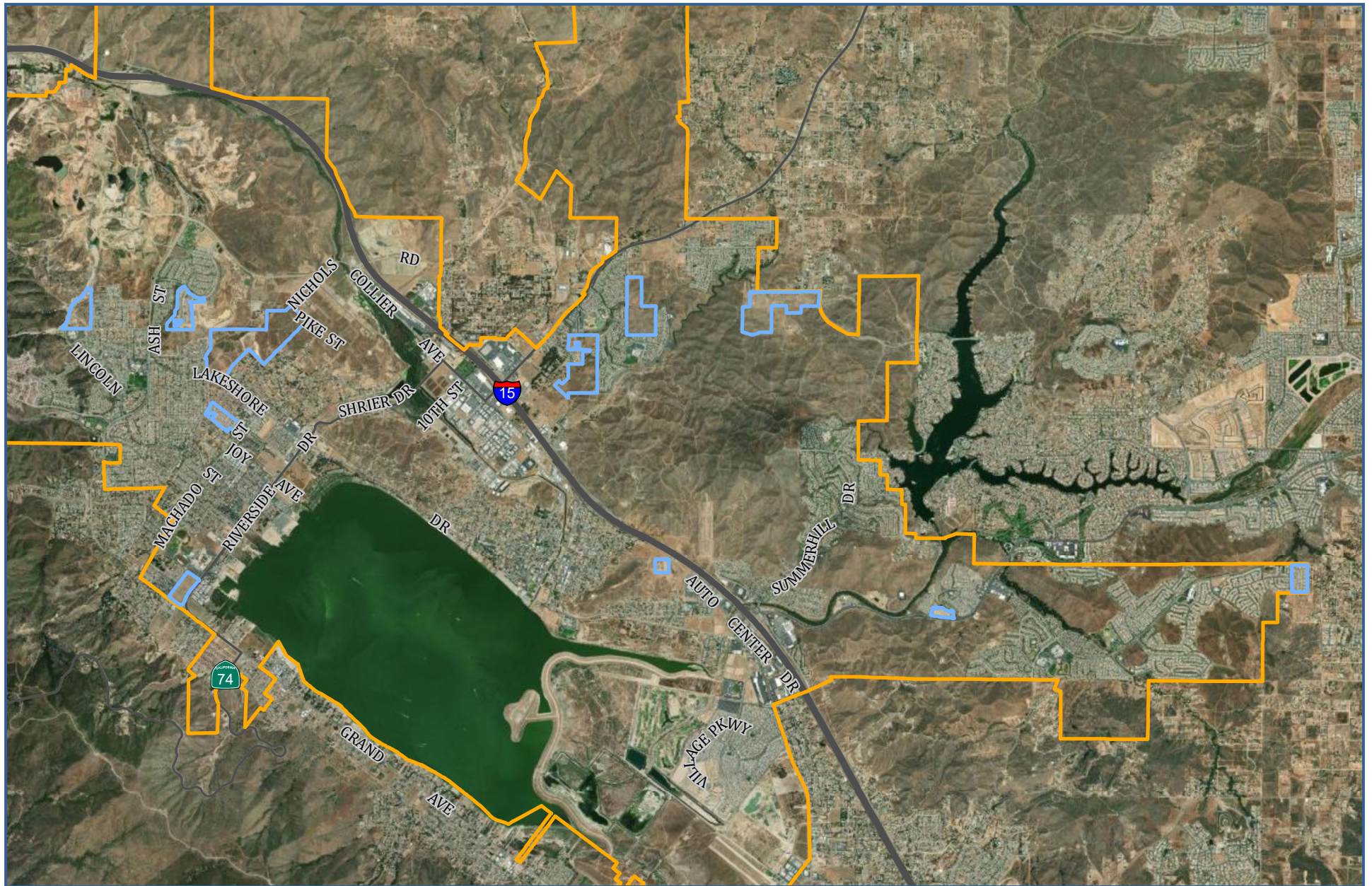
Fiscal Year	Levied		Delinquency		
	Parcels	Amount	Parcels	Amount	Del. Rate
2017-18	55	\$39,182.00	0	\$0.00	0.00%
2018-19	210	\$155,584.80	1	\$740.88	0.48%
2019-20	237	\$182,613.24	1	\$770.52	0.42%
2020-21	237	\$189,917.58	1	\$801.34	0.42%
Total		\$567,297.62	2	\$2,312.74	0.41%

APPENDIX A

Boundary Map



SPICER CONSULTING
G R O U P



BOUNDARY MAP

COMMUNITY FACILITIES DISTRICT NO. 2015-1
(PUBLIC SAFETY)



SPICER CONSULTING
GROUP