



Suite 160

31885 Corydon Rd, Lake Elsinore, CA 92530



Kelli Jones

Equity Management
42430 Winchester Rd, Temecula, CA 92590
kjones@equitymgt.com
(951) 326-7227

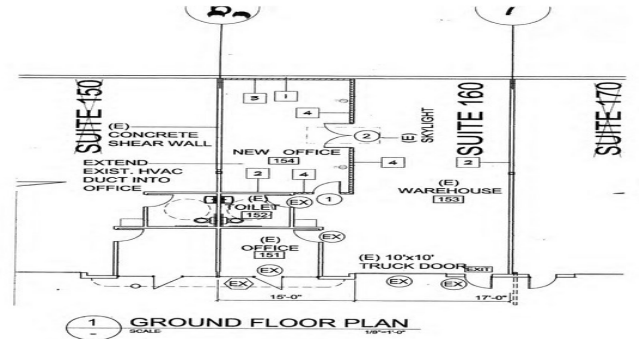


Suite 160

\$18.00 /SF/YR + IG (\$0.25)

Located in the Blue Lake Industrial Business Park, Lake Elsinore. Located near the I-15 freeway. Great visibility, warehouse door has front entry, three offices and warehouse space. Available October 1, 2023.

- Clean industrial business park, easy access to I-15 freeway



Rental Rate: \$18.00 /SF/YR + IG

Property Type: Industrial

Property Subtype: Warehouse

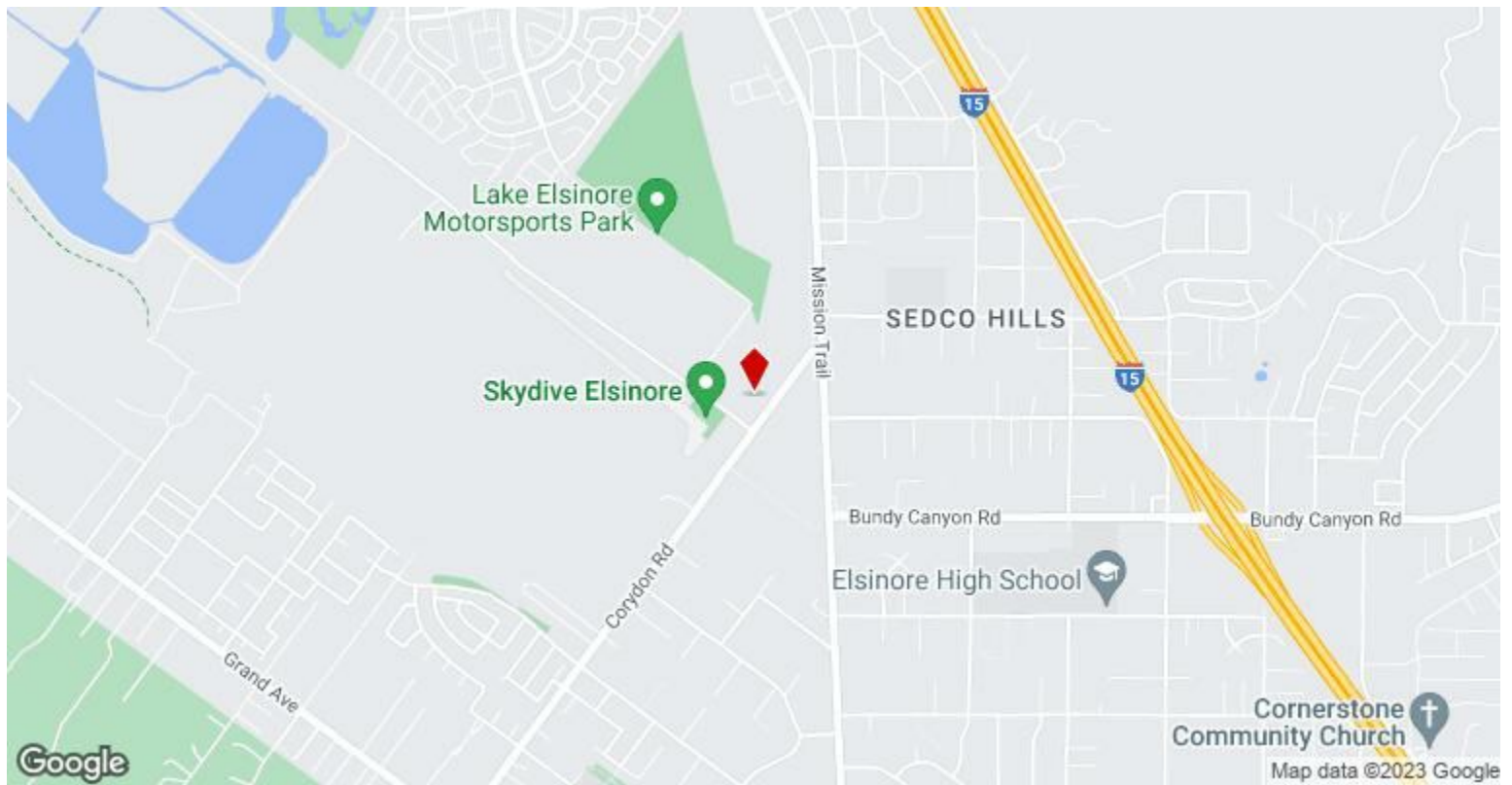
Rentable Building Area: 1,589 SF

Year Built: 2006

Rental Rate Mo: \$1.50 /SF/MO + IG

1st Floor Ste 160

Space Available	1,589 SF
Rental Rate	\$18.00 /SF/YR + IG
Date Available	October 01, 2023
Service Type	Industrial Gross
Space Type	Direct
Space Use	Industrial
Lease Term	5 - 10 Years



31885 Corydon Rd, Lake Elsinore, CA 92530

Located in the Blue Lake Industrial Business Park, Lake Elsinore. Located near the I-15 freeway. Great visibility, warehouse door has front entry, three offices and warehouse space. Available October 1, 2023.

Property Photos



Building Photo