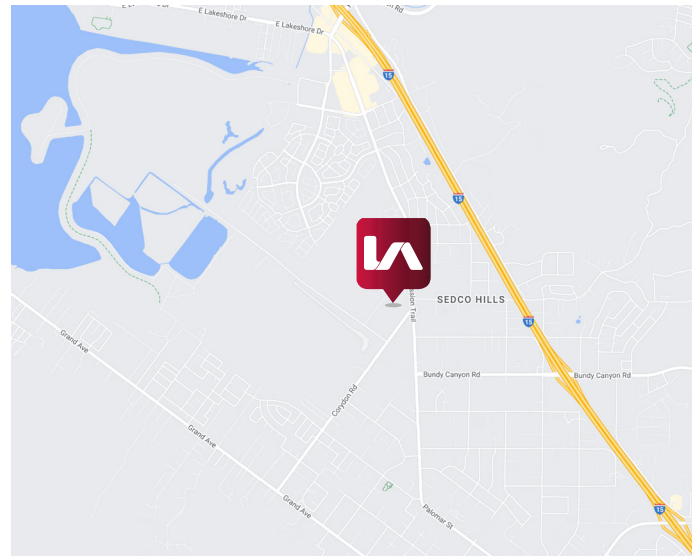


33575 MISSION TRAIL, UNIT 3 | LAKE ELSINORE
±3,750 SF INDUSTRIAL UNIT



PROPERTY FEATURES

- Unit 3: 3,750 SF Industrial Unit
- 500 SF of Office Space
- 20' Clear Height
- 2 Grade Level Doors
- Built in 2023
- LED Warehouse Lighting



For More Information, Contact:

JUSTIN SMITH, SIOR
Senior Vice President
949.400.4786
jbsmith@leeirvine.com
CalDRE 01504494

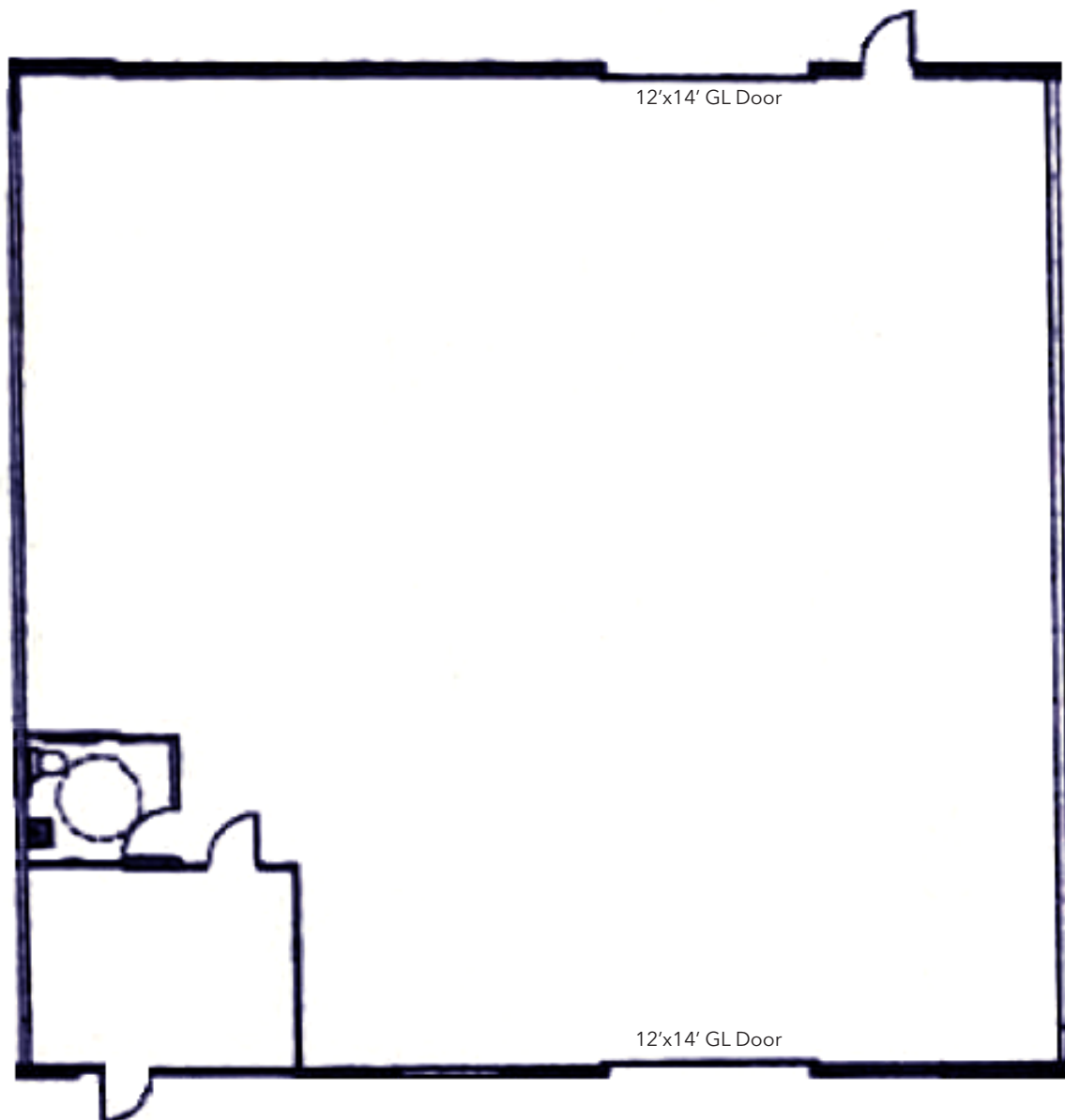
GRANT LA BOUNTY
Vice President
562.310.2048
glabounty@leeirvine.com
CalDRE 02086573

CHRIS VASSILIAN
Associate
949.422.8967
cvassilian@leeirvine.com
CalDRE 02191531

FOR LEASE

33575 MISSION TRAIL, UNIT 3 | LAKE ELSINORE
±3,750 SF INDUSTRIAL UNIT

FLOORPLAN



For More Information, Contact:

JUSTIN SMITH, SIOR
Senior Vice President
949.400.4786
jbsmith@leeirvine.com
CalDRE 01504494

GRANT LA BOUNTY
Vice President
562.310.2048
glabounty@leeirvine.com
CalDRE 02086573

CHRIS VASSILIAN
Associate
949.422.8967
cvassilian@leeirvine.com
CalDRE 02191531