



City of Lake Elsinore Redistricting 2021-2022

3/8/2021

National Demographics Corporation

Redistricting Process

Step	Description
Two Initial Hearings August 10 & September 14	Held prior to release of draft maps. Education and to solicit input on the communities in the Districts.
Census Data Release Mid/Late August	Census Bureau releases official 2020 Census population data.
California Data Release Early October 2021	California Statewide Database releases California's official 'prisoner-adjusted' 2020 redistricting data.
Two Draft Map Hearings March 8 & March 22	Two Public Hearings to discuss and revise the draft maps and to discuss the election sequence.
Map Adoption By April 17, 2022	Final map must be posted at least 7 days prior to adoption. Map adopted via ordinance.*

Redistricting Rules and Goals

1. Federal Laws

Equal Population
Federal Voting Rights Act
No Racial Gerrymandering



2. California Criteria for Cities (rank ordered)

- 1. Geographically contiguous**
- 2. Undivided neighborhoods and “communities of interest”**
(Socio-economic geographic areas that should be kept together)
- 3. Easily identifiable boundaries**
- 4. Compact**
(Do not bypass one group of people to get to a more distant group of people)

Prohibited:

“Shall not favor or discriminate against a political party.”

3. Other Traditional Redistricting Principles

Minimize voters shifted to different election years
Respect voters’ choices / continuity in office
Future population growth
Preserving the core of existing districts

Initial Draft Maps

- ❑ Three initial draft maps have been developed by NDC, and draft maps submitted from the Public.
- ❑ All of the maps created by NDC have a deviation under the required 10%.
- ❑ NDC Map Green has a deviation of 4.04%
- ❑ NDC Map Purple has a deviation of 7.69%
- ❑ NDC Map Tan has a deviation of 7.68%
- ❑ Public Map 201 has a deviation of 4.57%
- ❑ Public Map 202 has a deviation of 8.30%
- ❑ Public Map 203 has a deviation of 9.62%
- ❑ Public Map 204 has a deviation of 3.50%
- ❑ Existing Districts deviation is 44.29%

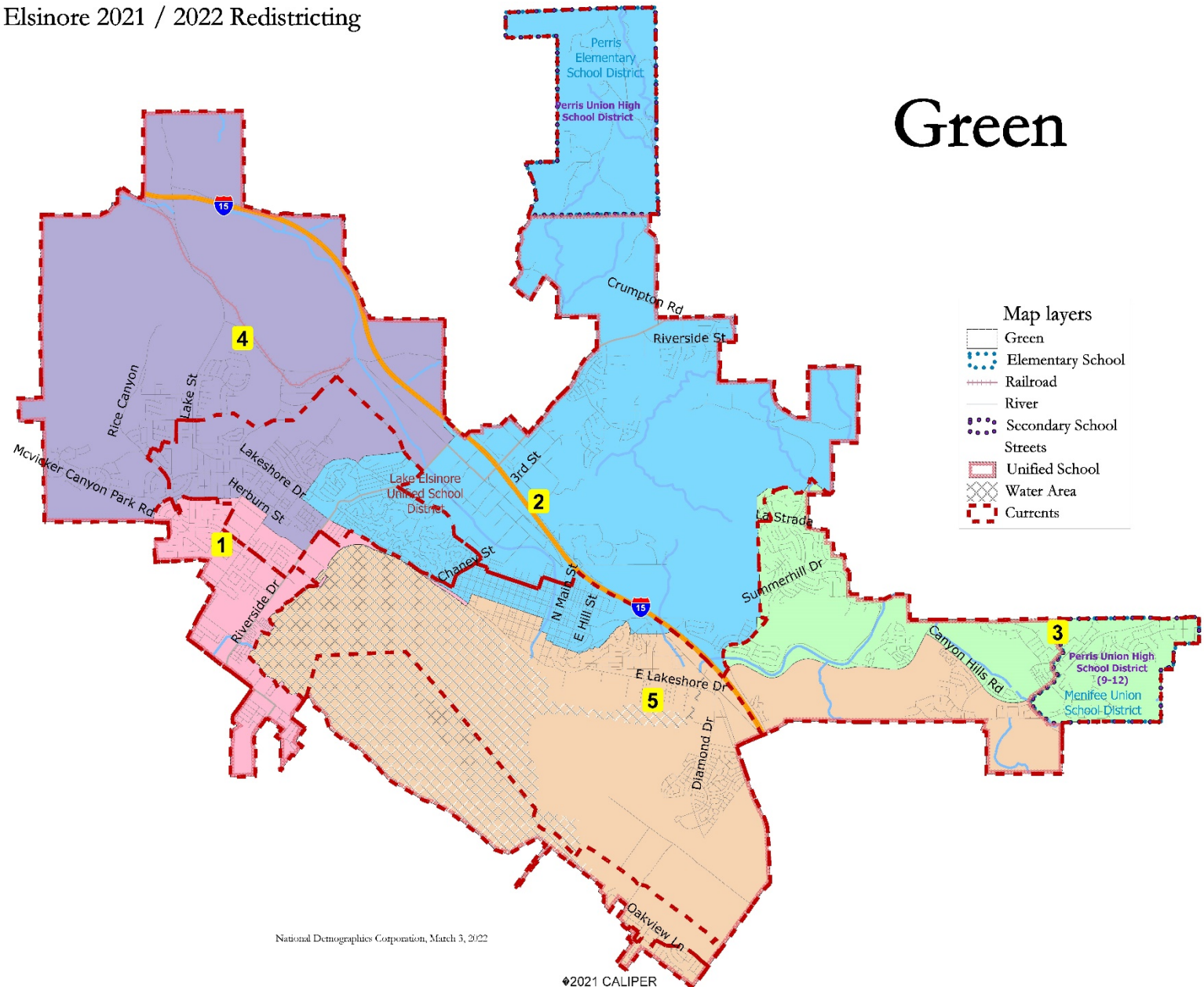
Demographic Summary of Existing Districts

Lake Elsinore Existing Districts							
District		1	2	3	4	5	Total
	Total Pop	11,785	15,042	17,906	11,660	14,123	70,516
	Deviation from ideal	-2,318	939	3,803	-2,443	20	6,246
	% Deviation	-16.44%	6.66%	26.97%	-17.32%	0.14%	44.29%
Total Pop	% Hisp	55.3%	49%	36%	62%	60%	51%
	% NH White	31%	28%	39%	27%	23%	30%
	% NH Black	5%	8%	10%	5%	7%	7%
	% Asian-American	4%	12%	12%	3%	6%	8%
Citizen Voting Age Pop	Total	5,766	8,481	10,132	7,108	6,296	37,783
	% Hisp	42%	42%	28%	52%	53%	42%
	% NH White	43%	41%	49%	39%	29%	41%
	% NH Black	5%	5%	13%	4%	11%	8%
Voter Registration (Nov 2020)	% Asian/Pac.Isl.	6%	11%	9%	3%	6%	7%
	Total	5,328	7,856	9,535	5,349	5,984	34,052
	% Latino est.	44%	41%	29%	49%	42%	39%
	% Spanish-Surnamed	40%	37%	26%	45%	39%	36%
	% Asian-Surnamed	2%	4%	3%	1%	2%	3%
	% Filipino-Surnamed	2%	2%	2%	1%	2%	2%
	% NH White est.	51%	48%	57%	47%	43%	50%
Voter Turnout (Nov 2020)	% NH Black	5%	6%	10%	4%	12%	8%
	Total	4,037	6,176	7,917	3,998	4,494	26,622
	% Latino est.	41%	38%	27%	45%	39%	36%
	% Spanish-Surnamed	37%	35%	25%	41%	37%	34%
	% Asian-Surnamed	2%	4%	3%	1%	2%	3%
	% Filipino-Surnamed	2%	2%	3%	1%	2%	2%
	% NH White est.	53%	50%	58%	50%	45%	52%
	% NH Black	5%	6%	10%	4%	12%	8%

NDC Draft Map Green

Lake Elsinore 2021 / 2022 Redistricting

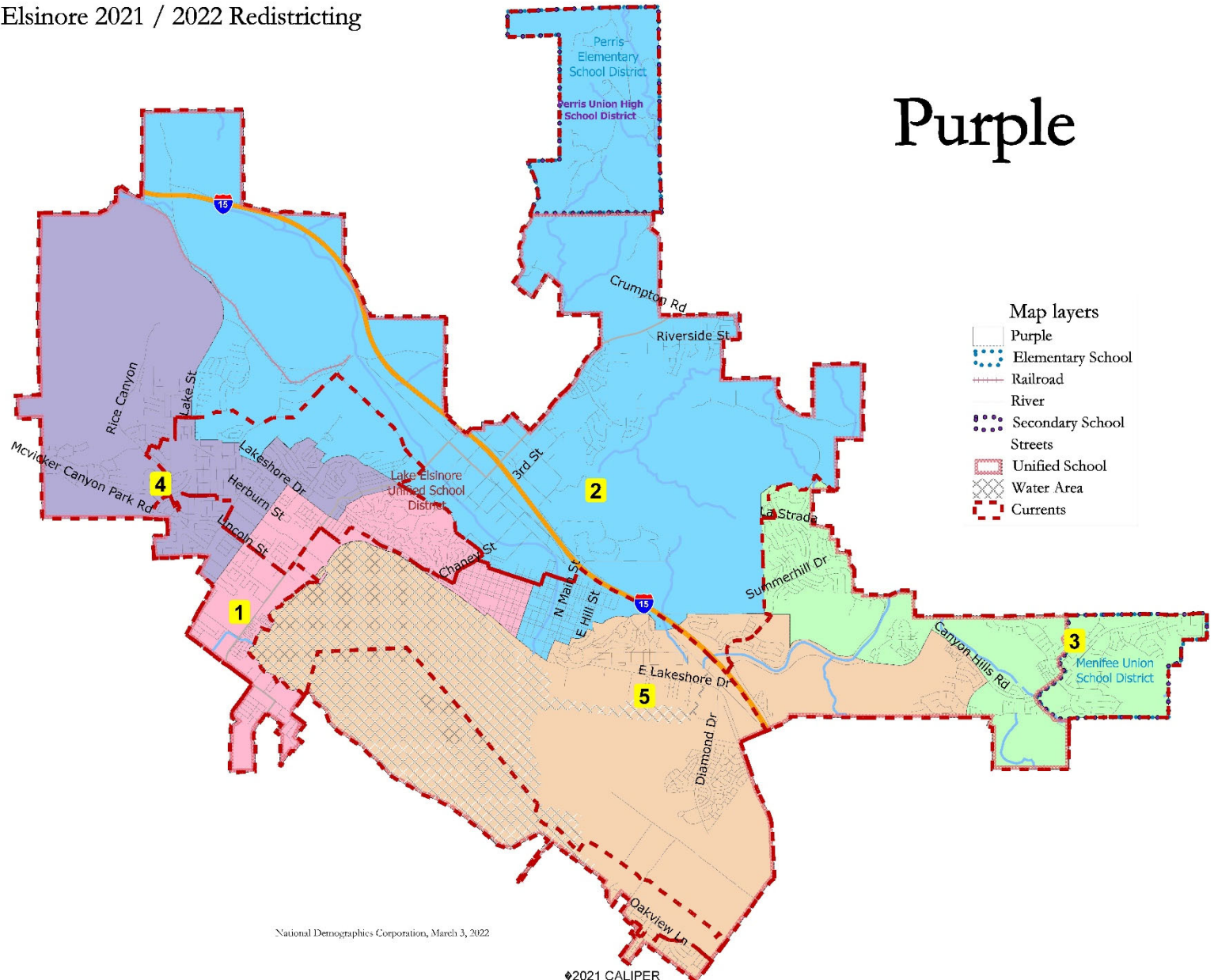
Green



NDC Draft Map Purple

Lake Elsinore 2021 / 2022 Redistricting

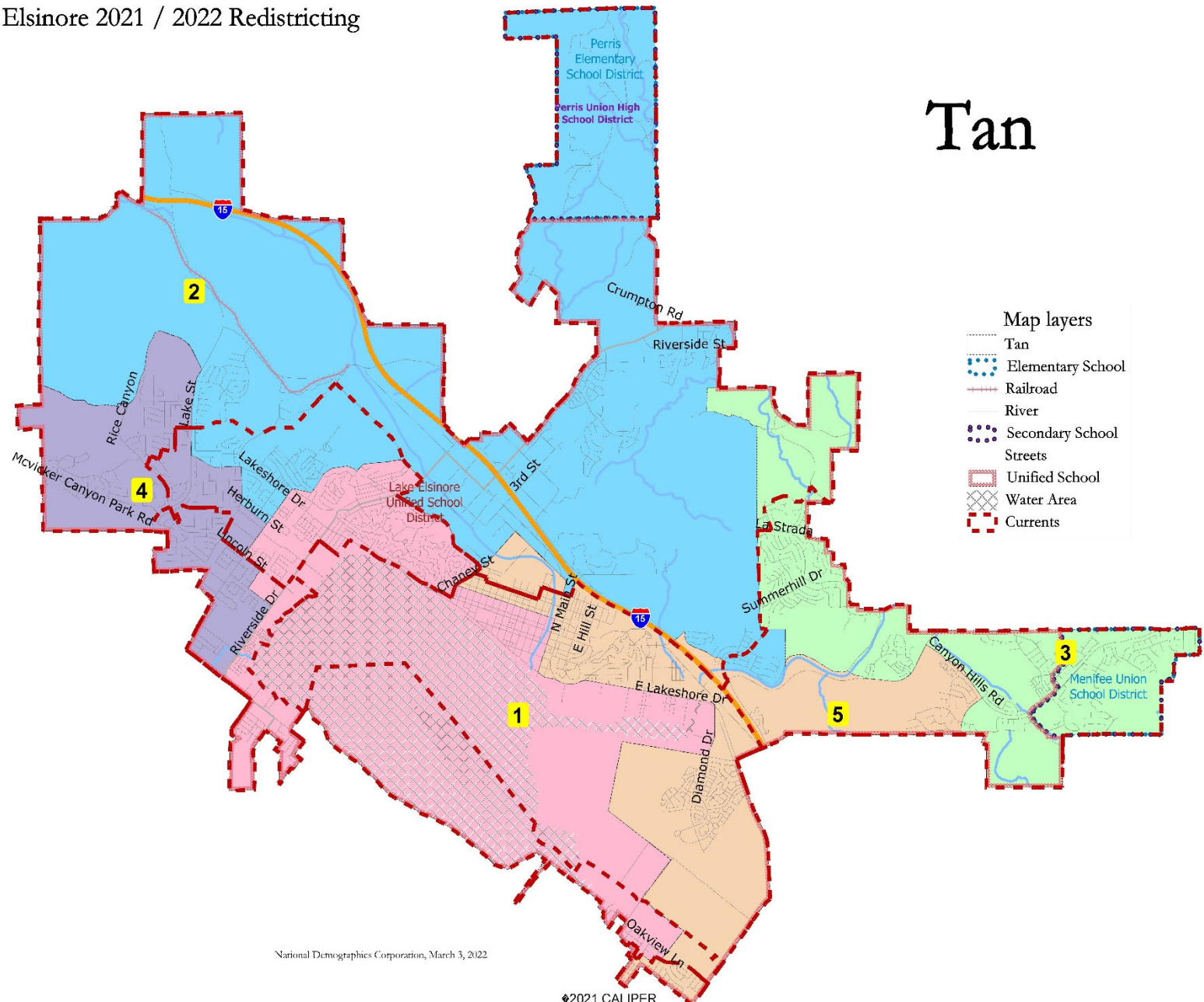
Purple



NDC Draft Map Tan

Lake Elsinore 2021 / 2022 Redistricting

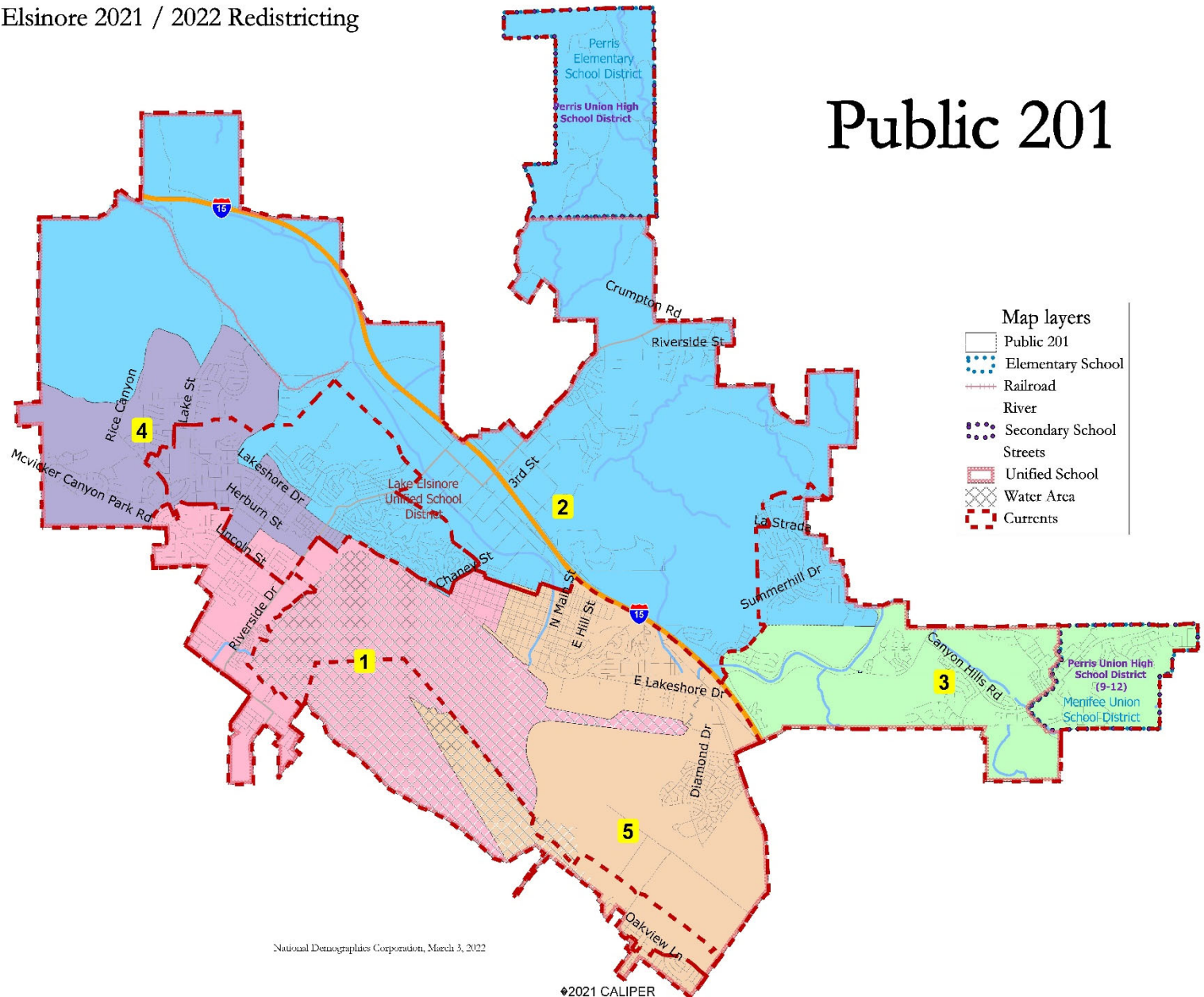
Tan



Public Map 201

Lake Elsinore 2021 / 2022 Redistricting

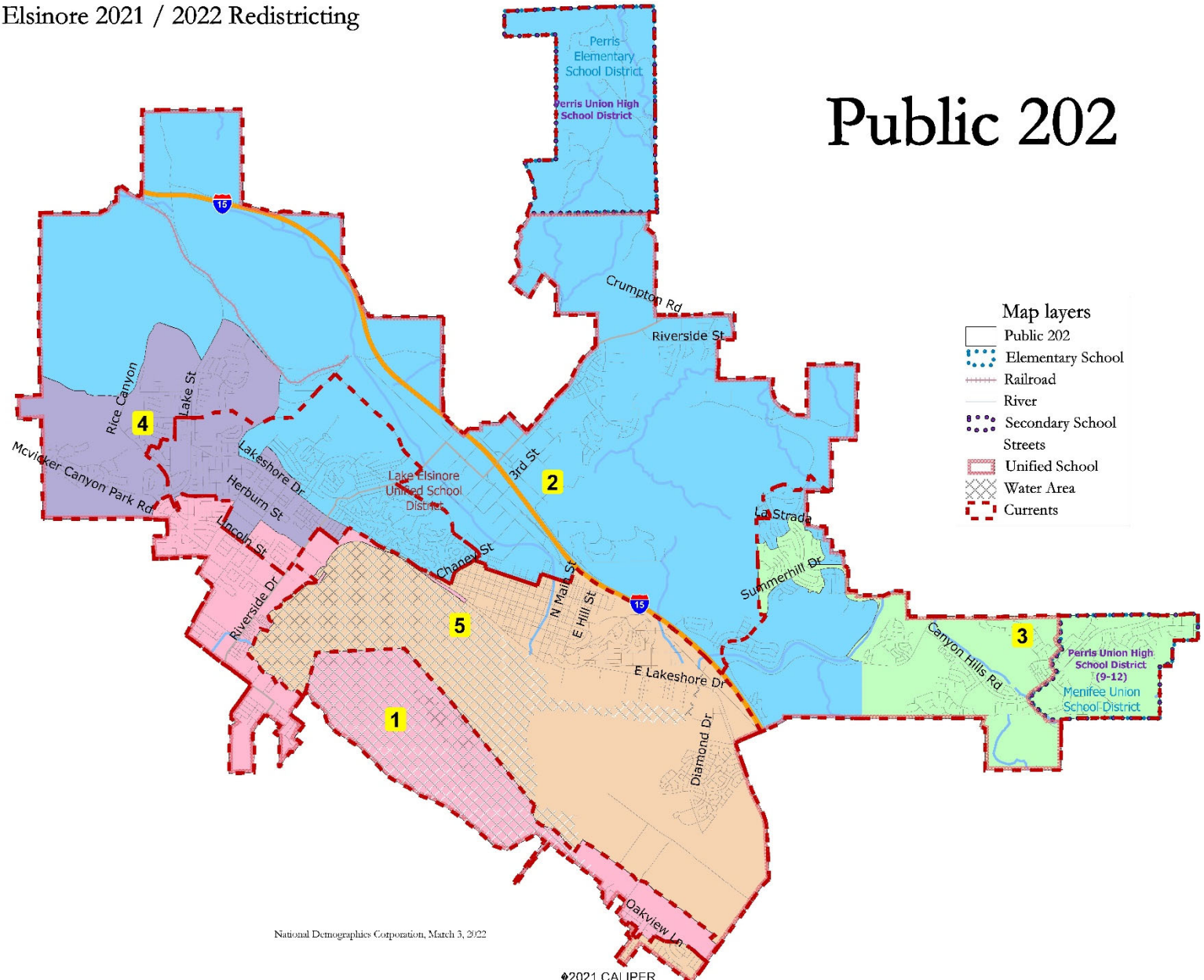
Public 201



Public Map 202

Lake Elsinore 2021 / 2022 Redistricting

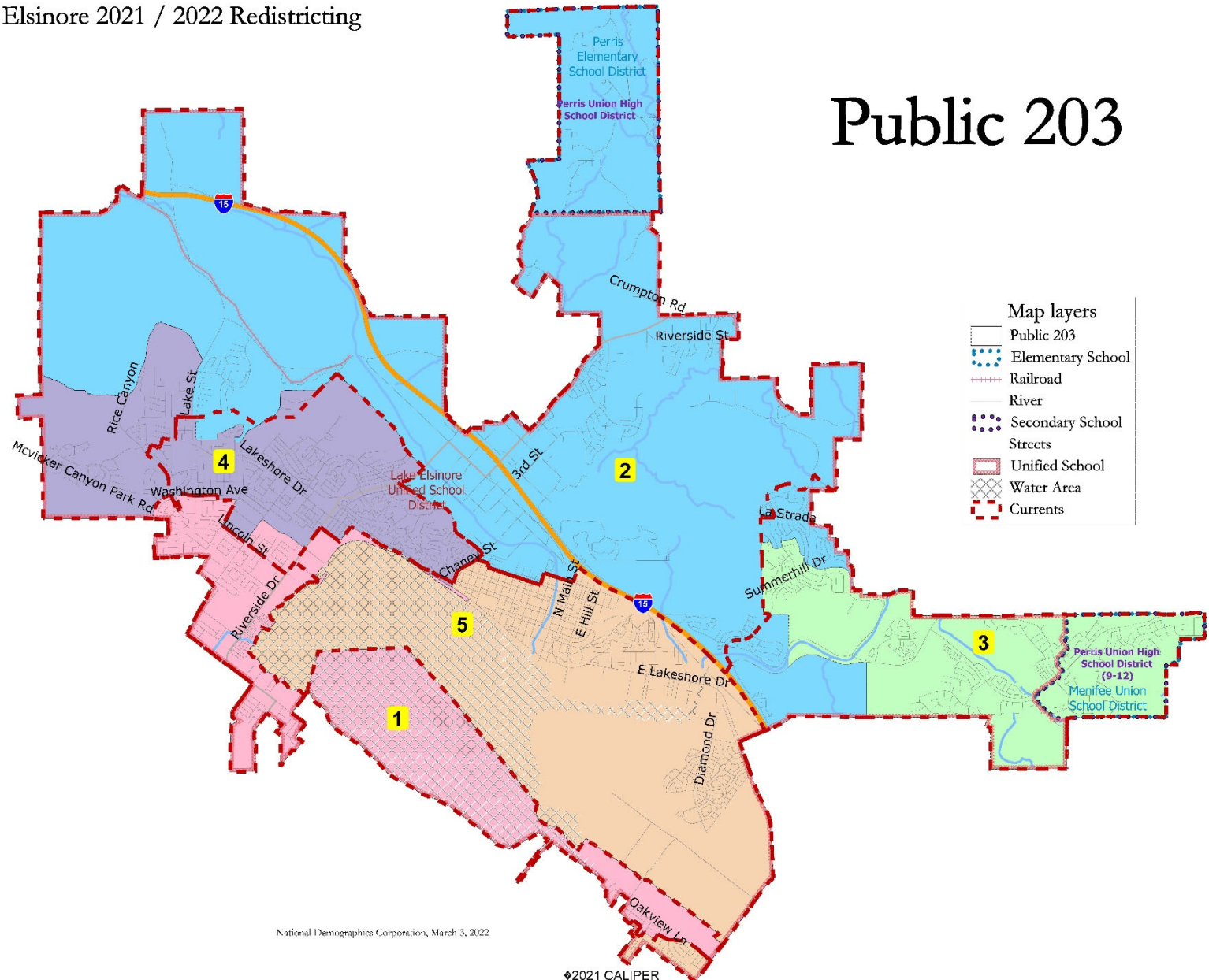
Public 202



Public Map 203

Lake Elsinore 2021 / 2022 Redistricting

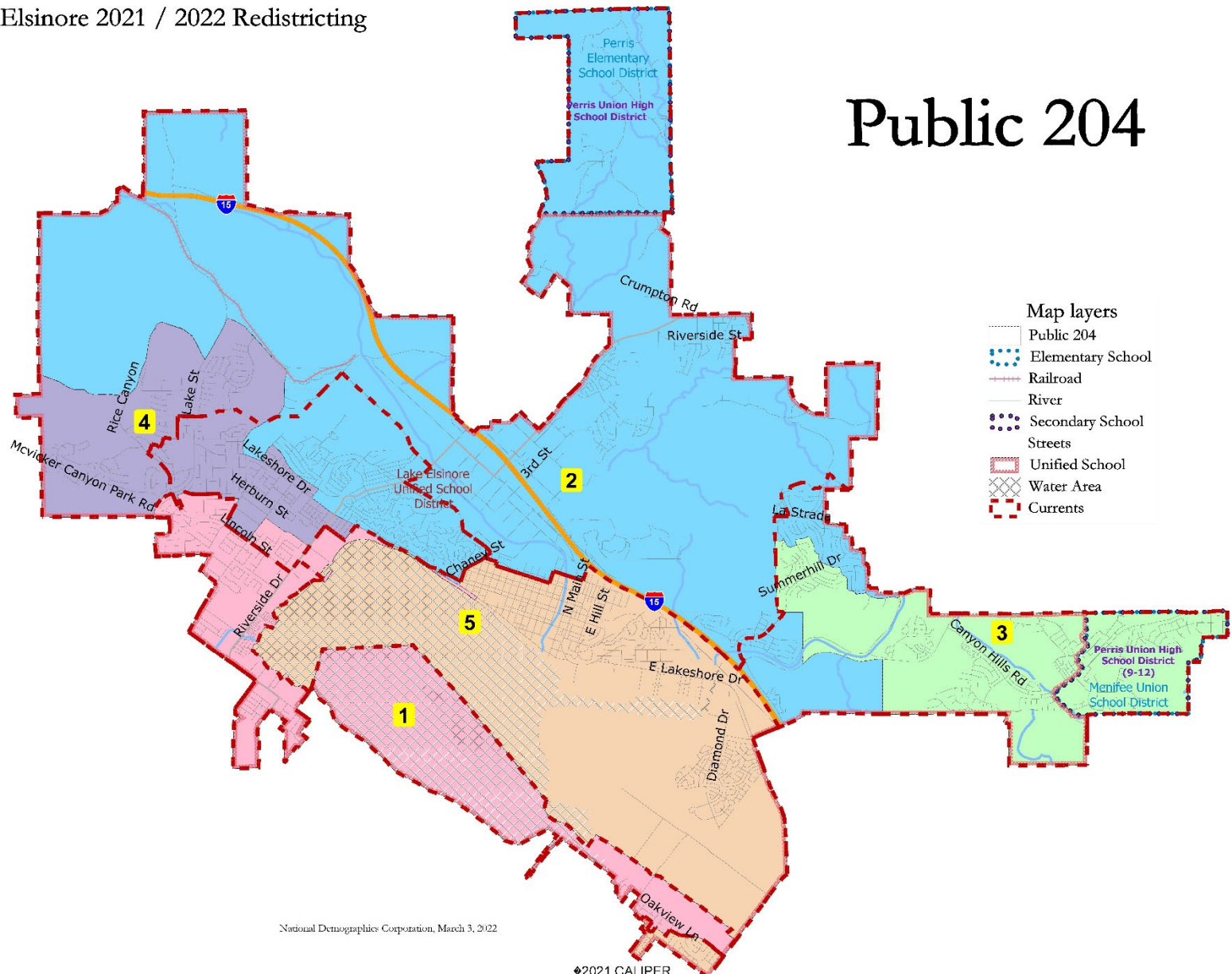
Public 203



Public Map 204

Lake Elsinore 2021 / 2022 Redistricting

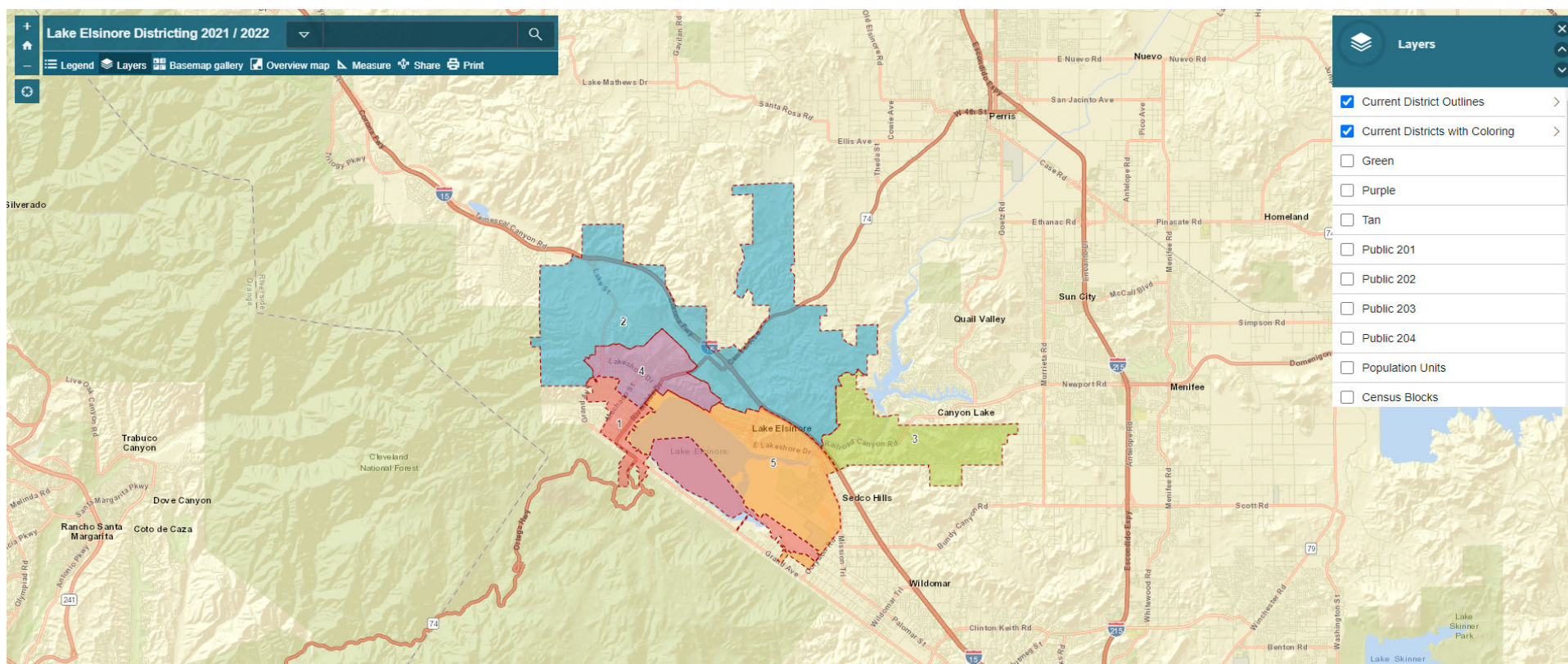
Public 204



Simple Map Review Tool

Online Interactive Review Map

- ESRI's "ArcGIS Online" – similar to Google Maps in ease of use
- Used to review, analyze and compare maps, not to create them
- Includes overlays of "community of interest" and other data



Discussion

- ❑ Conduct a Public Hearing
- ❑ Any questions on the Draft Maps?
- ❑ Provide direction on what map the Council prefers or new map the Council would like see at the next hearing